



SZABO SCANDIC

Part of Europa Biosite

Produktinformation



Forschungsprodukte & Biochemikalien



Zellkultur & Verbrauchsmaterial



Diagnostik & molekulare Diagnostik



Laborgeräte & Service

Weitere Information auf den folgenden Seiten!
See the following pages for more information!



Lieferung & Zahlungsart

siehe unsere [Liefer- und Versandbedingungen](#)

Zuschläge

- Mindermengenzuschlag
- Trockeneiszuschlag
- Gefahrgutzuschlag
- Expressversand

SZABO-SCANDIC HandelsgmbH

Quellenstraße 110, A-1100 Wien

T. +43(0)1 489 3961-0

F. +43(0)1 489 3961-7

mail@szabo-scandic.com

www.szabo-scandic.com

[linkedin.com/company/szaboscandic](https://www.linkedin.com/company/szaboscandic) 

Datasheet for 003-0050

Chicken IgG Agarose

Overview

Description:	Chicken IgG Whole Molecule Agarose Conjugated - 003-0050
Item No.:	003-0050
Size:	10 mg
Applications:	SDS-PAGE
Origin:	Chicken

Product Details

Background:	Chicken IgG whole molecule Agarose Conjugated product is made from IgG, secreted as part of the adaptive immune response by plasma B cells, immunoglobulin G constitutes 75% of serum immunoglobulins. Immunoglobulin G binds to viruses, bacteria, as well as fungi and facilitates their destruction or neutralization via agglutination (and thereby immobilizing them), activation of the compliment cascade, and opsonization for phagocytosis. The whole IgG molecule possesses both the F(c) region, recognized by high-affinity Fc receptor proteins, as well as the F(ab) region possessing the epitope-recognition site. Both heavy and light chains of the antibody molecule are present.
Synonyms:	Chicken IgG/IgY Whole Molecule Agarose Conjugate, Chicken IgG/IgY Agarose
Species of Origin:	Chicken
Conjugate:	Agarose
Format:	IgG
Type:	Native Protein

Target Details

Purity/Specificity:	This product is an purified Chicken IgG isolated from normal Chicken Serum coupled to activated agarose. Sufficient antibody capacity is provided to bind a minimum of 5 mg of anti-Chicken IgG.
----------------------------	--

Application Details

Tested Applications:	SDS-PAGE
Application Note:	Chicken IgG Agarose has been tested by SDS-PAGE and is suitable for immunoprecipitation and Immunoaffinity purifications.
Assay Dilutions:	All assays should be optimized by the user. Recommended dilutions (if any) may be listed below.
IP:	User Optimized

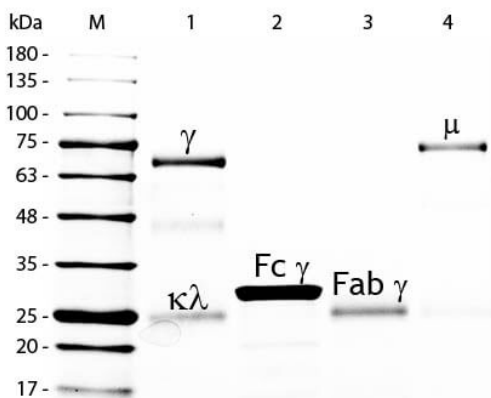
Formulation

Physical State:	Suspension of agarose beads
Buffer:	0.01 M Sodium Phosphate, 0.15 M Sodium Chloride, pH 7.2
Preservative:	0.01% (w/v) Sodium Azide
Stabilizer:	None

Shipping & Handling

Shipping Condition:	Wet Ice
Storage Condition:	Store vial at 4° C prior to opening. DO NOT FREEZE.
Expiration:	Expiration date is one (1) year from date of receipt.

Images



SDS-PAGE

SDS-PAGE of Chicken IgG/IgY Whole Molecule Rhodamine Conjugated (p/n 003-0002). Lane M: 5 μ L Opal Prestained Marker (p/n MB-210-0500). Lane 1: Reduced Chicken IgG Whole Molecule Rhodamine Conjugated (p/n 003-0002). Lane 2: Reduced Chicken IgG F(c) Fragment (p/n 003-0103). Lane 3: Reduced Chicken IgG Fab Fragment (p/n 003-0105). Lane 4: Reduced Chicken IgM Whole Molecule (p/n 003-0107). Load: 1 μ g per lane. Predicted/Observed size: IgG at 72 and 25 kDa; F(c) at 25 kDa; Fab at 25 kDa; IgM at 75 kDa. Observed F(c) Fragment migrates slightly higher. Other bands: Chicken IgG heavy chain alternative splicing variant at approximately 40 kDa in Lane 1.

Disclaimer

This product is for research use only and is not intended for therapeutic or diagnostic applications. Please contact a technical service representative for more information. All products of animal origin manufactured by Rockland Immunochemicals are derived from starting materials of North American origin. Collection was performed in United States Department of Agriculture (USDA) inspected facilities and all materials have been inspected and certified to be free of disease and suitable for exportation. All properties listed are typical characteristics and are not specifications. All suggestions and data are offered in good faith but without guarantee as conditions and methods of use of our products are beyond our control. All claims must be made within 30 days following the date of delivery. The prospective user must determine the suitability of our materials before adopting them on a commercial scale. Suggested uses of our products are not recommendations to use our products in violation of any patent or as a license under any patent of Rockland Immunochemicals, Inc. If you require a commercial license to use this material and do not have one, then return this material, unopened to: Rockland Inc., P.O. BOX 5199, Limerick, Pennsylvania, USA.