



SZABO SCANDIC

Part of Europa Biosite

Produktinformation



Forschungsprodukte & Biochemikalien



Zellkultur & Verbrauchsmaterial



Diagnostik & molekulare Diagnostik



Laborgeräte & Service

Weitere Information auf den folgenden Seiten!
See the following pages for more information!



Lieferung & Zahlungsart

siehe unsere [Liefer- und Versandbedingungen](#)

Zuschläge

- Mindermengenzuschlag
- Trockeneiszuschlag
- Gefahrgutzuschlag
- Expressversand

SZABO-SCANDIC HandelsgmbH

Quellenstraße 110, A-1100 Wien

T. +43(0)1 489 3961-0

F. +43(0)1 489 3961-7

mail@szabo-scandic.com

www.szabo-scandic.com

[linkedin.com/company/szaboscandic](https://www.linkedin.com/company/szaboscandic) 

Datasheet for 004-0105**Dog IgG Fab****Overview**

| | |
|----------------------|---------------------------------|
| Description: | Dog IgG Fab Fragment - 004-0105 |
| Item No.: | 004-0105 |
| Size: | 1 mg |
| Applications: | SDS-PAGE |
| Origin: | Dog |

Product Details

| | |
|---------------------------|---|
| Background: | Secreted as part of the adaptive immune response by plasma B cells, immunoglobulin G constitutes 75% of serum immunoglobulins. Immunoglobulin G binds to viruses, bacteria, as well as fungi and facilitates their destruction or neutralization via agglutination (and thereby immobilizing them), activation of the compliment cascade, and opsonization for phagocytosis. This product possesses the F(ab) region possessing the epitope-recognition site, both heavy and light chains of the antibody molecule are present. |
| Synonyms: | Dog IgG Fab Fragment |
| Species of Origin: | Dog |
| Format: | IgG Fab |
| Type: | Native Protein |

Target Details

| | |
|----------------------------|--|
| Purity/Specificity: | This product was prepared from normal serum by a multi-step process which includes delipidation, salt fractionation and ion exchange chromatography followed by papain digestion and extensive dialysis against the buffer stated above. Assay by immunoelectrophoresis resulted in a single precipitin arc against anti-Dog IgG, anti-Dog IgG F(ab') ₂ and anti-Dog Serum. No reaction was observed against anti-Dog IgG F(c) or anti- Papain. |
|----------------------------|--|

Application Details

| | |
|-----------------------------|----------|
| Tested Applications: | SDS-PAGE |
|-----------------------------|----------|

| | |
|--------------------------|--|
| Application Note: | Dog IgG F(ab) fragment has been tested by SDS-Page and can be utilized as a control or standard reagent in Western Blotting and ELISA experiments. |
| Assay Dilutions: | All assays should be optimized by the user. Recommended dilutions (if any) may be listed below. |

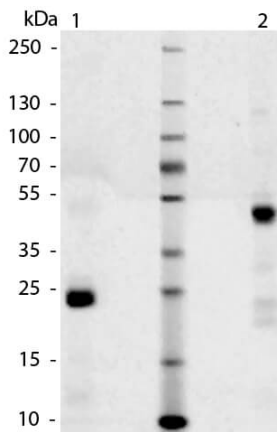
Formulation

| | |
|------------------------|--|
| Physical State: | Liquid (sterile filtered) |
| Concentration: | 1.0 mg/mL by UV absorbance at 280 nm |
| Buffer: | 0.02 M Potassium Phosphate, 0.15 M Sodium Chloride, pH 7.2 |
| Preservative: | 0.01% (w/v) Sodium Azide |
| Stabilizer: | None |

Shipping & Handling

| | |
|----------------------------|---|
| Shipping Condition: | Wet Ice |
| Storage Condition: | Store vial at 4° C prior to opening. This product is stable 4° C as an undiluted liquid. Dilute only prior to immediate use. For extended storage mix with an equal volume of glycerol, aliquot contents and freeze at -20° C or below. Avoid cycles of freezing and thawing. |
| Expiration: | Expiration date is one (1) year from date of receipt. |

Images



SDS-PAGE

SDS-Page of Dog IgG Fab Fragment. Lane 1: Dog Fab – Reduced. Lane 2: Dog Fab – Non-reduced. Load: 1.0 µg per lane. Predicted/Observed size: 25 kDa – Reduced, 50 kDa – Non-reduced for Fab fragment. Other band(s): None.

Disclaimer

This product is for research use only and is not intended for therapeutic or diagnostic applications. Please contact a technical service representative for more information. All products of animal origin manufactured by Rockland Immunochemicals are derived from starting materials of North American origin. Collection was performed in United States Department of Agriculture (USDA) inspected facilities and all materials have been inspected and certified to be free of disease and suitable for exportation. All properties listed are typical characteristics and are not specifications. All suggestions and data are offered in good faith but without guarantee as conditions and methods of use of our products are beyond our control. All claims must be made within 30 days following the date of delivery. The prospective user must determine the suitability of our materials before adopting them on a commercial scale. Suggested uses of our products are not recommendations to use our products in violation of any patent or as a license under any patent of Rockland Immunochemicals, Inc. If you require a commercial license to use this material and do not have one, then return this material, unopened to: Rockland Inc., P.O. BOX 5199, Limerick, Pennsylvania, USA.