



SZABO SCANDIC

Part of Europa Biosite

Produktinformation



Forschungsprodukte & Biochemikalien



Zellkultur & Verbrauchsmaterial



Diagnostik & molekulare Diagnostik



Laborgeräte & Service

Weitere Information auf den folgenden Seiten!
See the following pages for more information!



Lieferung & Zahlungsart

siehe unsere [Liefer- und Versandbedingungen](#)

Zuschläge

- Mindermengenzuschlag
- Trockeneiszuschlag
- Gefahrgutzuschlag
- Expressversand

SZABO-SCANDIC HandelsgmbH

Quellenstraße 110, A-1100 Wien

T. +43(0)1 489 3961-0

F. +43(0)1 489 3961-7

mail@szabo-scandic.com

www.szabo-scandic.com

[linkedin.com/company/szaboscandic](https://www.linkedin.com/company/szaboscandic) 

Datasheet for 005-0050**Goat IgG Agarose****Overview**

| | |
|----------------------|---|
| Description: | Goat IgG Whole Molecule Agarose Conjugated - 005-0050 |
| Item No.: | 005-0050 |
| Size: | 10 mg |
| Applications: | SDS-PAGE |
| Origin: | Goat |

Product Details

| | |
|---------------------------|---|
| Background: | Goat IgG whole molecule Agarose Conjugated product is made from IgG, secreted as part of the adaptive immune response by plasma B cells, immunoglobulin G constitutes 75% of serum immunoglobulins. Immunoglobulin G binds to viruses, bacteria, as well as fungi and facilitates their destruction or neutralization via agglutination (and thereby immobilizing them), activation of the compliment cascade, and opsonization for phagocytosis. The whole IgG molecule possesses both the F(c) region, recognized by high-affinity Fc receptor proteins, as well as the F(ab) region possessing the epitope-recognition site. Both heavy and light chains of the antibody molecule are present. |
| Synonyms: | Goat IgG Whole Molecule Agarose Conjugate, Goat IgG Agarose |
| Species of Origin: | Goat |
| Conjugate: | Agarose |
| Format: | IgG |
| Type: | Native Protein |

Target Details

| | |
|----------------------------|--|
| Purity/Specificity: | This product is normal Goat IgG coupled to activated agarose. A single precipitin arc was observed against anti-Goat Serum when assayed by immunoelectrophoresis prior to coupling to the beads. |
|----------------------------|--|

Application Details

| | |
|-----------------------------|--|
| Tested Applications: | SDS-PAGE |
| Application Note: | Goat IgG Agarose has been tested in SDS-Page and is suitable for immunoprecipitation and Immunoaffinity purifications. |
| Assay Dilutions: | All assays should be optimized by the user. Recommended dilutions (if any) may be listed below. |

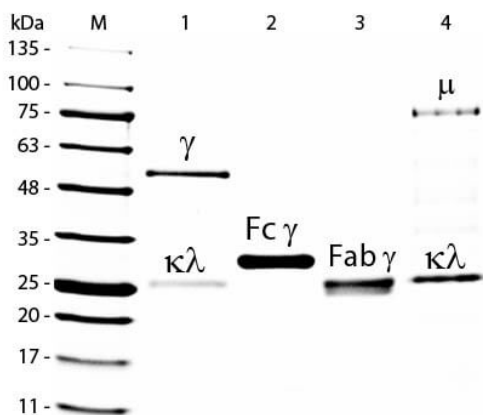
Formulation

| | |
|------------------------|--|
| Physical State: | Suspension of agarose beads |
| Concentration: | 14.2 mg/cc packed agarose antibody per cc agarose |
| Buffer: | 0.02 M Potassium Phosphate, 0.15 M Sodium Chloride, pH 7.2 |
| Preservative: | 0.05% (w/v) Sodium Azide |
| Stabilizer: | None |

Shipping & Handling

| | |
|----------------------------|---|
| Shipping Condition: | Wet Ice |
| Storage Condition: | Store vial at 4° C prior to opening. DO NOT FREEZE. |
| Expiration: | Expiration date is one (1) year from date of receipt. |

Images



SDS-PAGE

SDS-PAGE of Goat IgG Whole Molecule Rhodamine Conjugated (p/n 005-0002). Lane M: 5 µL Opal Prestained Marker (p/n MB-210-0500). Lane 1: Reduced Goat IgG Whole Molecule Rhodamine Conjugated (p/n 005-0002). Lane 2: Reduced Goat IgG F(c) Fragment (p/n 005-0103). Lane 3: Reduced Goat IgG F(ab) Fragment (p/n 005-0105). Lane 4: Reduced Goat IgM Whole Molecule (p/n 005-0107). Load: 1 µg for IgG, F(c) and F(ab); 3 µg for IgM. Predicted/Observed size: IgG at 50 and 25 kDa; F(c) at 25 kDa; F(ab) at 25 kDa; IgM at 70 and 23 kDa. Observed F(c) Fragment migrates slightly higher.

Disclaimer

This product is for research use only and is not intended for therapeutic or diagnostic applications. Please contact a technical service representative for more information. All products of animal origin manufactured by Rockland Immunochemicals are derived from starting materials of North American origin. Collection was performed in United States Department of Agriculture (USDA) inspected facilities and all materials have been inspected and certified to be free of disease and suitable for exportation. All properties listed are typical characteristics and are not specifications. All suggestions and data are offered in good faith but without guarantee as conditions and methods of use of our products are beyond our control. All claims must be made within 30 days following the date of delivery. The prospective user must determine the suitability of our materials before adopting them on a commercial scale. Suggested uses of our products are not recommendations to use our products in violation of any patent or as a license under any patent of Rockland Immunochemicals, Inc. If you require a commercial license to use this material and do not have one, then return this material, unopened to: Rockland Inc., P.O. BOX 5199, Limerick, Pennsylvania, USA.