



SZABO SCANDIC

Part of Europa Biosite

Produktinformation



Forschungsprodukte & Biochemikalien



Zellkultur & Verbrauchsmaterial



Diagnostik & molekulare Diagnostik



Laborgeräte & Service

Weitere Information auf den folgenden Seiten!
See the following pages for more information!



Lieferung & Zahlungsart

siehe unsere [Liefer- und Versandbedingungen](#)

Zuschläge

- Mindermengenzuschlag
- Trockeneiszuschlag
- Gefahrgutzuschlag
- Expressversand

SZABO-SCANDIC HandelsgmbH

Quellenstraße 110, A-1100 Wien

T. +43(0)1 489 3961-0

F. +43(0)1 489 3961-7

mail@szabo-scandic.com

www.szabo-scandic.com

[linkedin.com/company/szaboscandic](https://www.linkedin.com/company/szaboscandic) 

Datasheet for 005-0107**Goat IgM****Overview**

Description:	Goat IgM Whole Molecule - 005-0107
Item No.:	005-0107
Size:	1 mg
Applications:	SDS-PAGE
Origin:	Goat

Product Details

Background:	Immunoglobulin M is the largest antibody isotype and the first to be secreted against an initial exposure to antigen. IgM is predominantly produced in the spleen. Formed from covalently linking 5 immunoglobulins together, the approximate molecular weight of IgM is 900kDa and possesses 10 binding sites (though due to the size of most antigens, not all sites are capable of binding at once). Due to this large size, IgM is typically isolated to the serum. Goat IgM antibody is ideal for investigators in Immunology, Microbiology, and Cell Biology.
Synonyms:	Goat IgM whole molecule
Species of Origin:	Goat
Format:	IgM
Type:	Native Protein

Target Details

Purity/Specificity:	This product was prepared from normal serum by a multi-step process which includes delipidation, selective precipitation and tandem molecular sieve chromatography followed by extensive dialysis against the buffer stated above. Assay by immunoelectrophoresis resulted in a single precipitin arc against anti-Goat Serum and anti-Goat IgM (μ chain specific). No reaction was observed against anti-Goat IgG F(c). Some light chain cross reactivity will occur with anti-Goat IgG.
----------------------------	--

Application Details

Tested Applications:	SDS-PAGE
Application Note:	Goat IgM whole molecule has been tested in SDS-Page and can be utilized as a control or standard reagent in Western Blotting and ELISA experiments.
Assay Dilutions:	All assays should be optimized by the user. Recommended dilutions (if any) may be listed below.

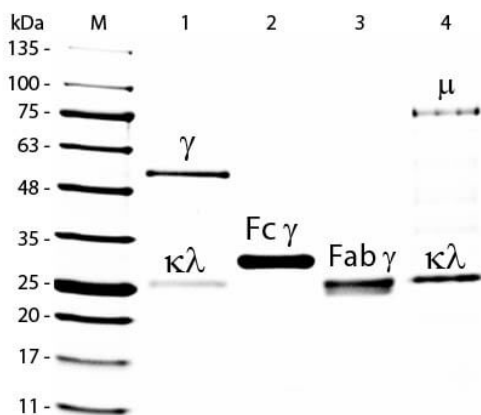
Formulation

Physical State:	Liquid (sterile filtered)
Concentration:	1.1 mg/mL by UV absorbance at 280 nm
Buffer:	0.1 M Tris Chloride, 0.5 M Sodium Chloride, pH 8.0
Preservative:	0.1% (w/v) Sodium Azide
Stabilizer:	10% (v/v) Glycerol

Shipping & Handling

Shipping Condition:	Wet Ice
Storage Condition:	Store vial at 4° C prior to opening. This product is stable 4° C as an undiluted liquid. Dilute only prior to immediate use. For extended storage mix with an equal volume of glycerol, aliquot contents and freeze at -20° C or below. Avoid cycles of freezing and thawing.
Expiration:	Expiration date is one (1) year from date of receipt.

Images



SDS-PAGE

SDS-PAGE of Goat IgG Whole Molecule Rhodamine Conjugated (p/n 005-0002). Lane M: 5 μ L Opal Prestained Marker (p/n MB-210-0500). Lane 1: Reduced Goat IgG Whole Molecule Rhodamine Conjugated (p/n 005-0002). Lane 2: Reduced Goat IgG F(c) Fragment (p/n 005-0103). Lane 3: Reduced Goat IgG F(ab) Fragment (p/n 005-0105). Lane 4: Reduced Goat IgM Whole Molecule (p/n 005-0107). Load: 1 μ g for IgG, F(c) and F(ab); 3 μ g for IgM. Predicted/Observed size: IgG at 50 and 25 kDa; F(c) at 25 kDa; F(ab) at 25 kDa; IgM at 70 and 23 kDa. Observed F(c) Fragment migrates slightly higher.

Disclaimer

This product is for research use only and is not intended for therapeutic or diagnostic applications. Please contact a technical service representative for more information. All products of animal origin manufactured by Rockland Immunochemicals are derived from starting materials of North American origin. Collection was performed in United States Department of Agriculture (USDA) inspected facilities and all materials have been inspected and certified to be free of disease and suitable for exportation. All properties listed are typical characteristics and are not specifications. All suggestions and data are offered in good faith but without guarantee as conditions and methods of use of our products are beyond our control. All claims must be made within 30 days following the date of delivery. The prospective user must determine the suitability of our materials before adopting them on a commercial scale. Suggested uses of our products are not recommendations to use our products in violation of any patent or as a license under any patent of Rockland Immunochemicals, Inc. If you require a commercial license to use this material and do not have one, then return this material, unopened to: Rockland Inc., P.O. BOX 5199, Limerick, Pennsylvania, USA.