



# SZABO SCANDIC

Part of Europa Biosite

## Produktinformation



Forschungsprodukte & Biochemikalien



Zellkultur & Verbrauchsmaterial



Diagnostik & molekulare Diagnostik



Laborgeräte & Service

Weitere Information auf den folgenden Seiten!  
See the following pages for more information!



### Lieferung & Zahlungsart

siehe unsere [Liefer- und Versandbedingungen](#)

### Zuschläge

- Mindermengenzuschlag
- Trockeneiszuschlag
- Gefahrgutzuschlag
- Expressversand

### SZABO-SCANDIC HandelsgmbH

Quellenstraße 110, A-1100 Wien

T. +43(0)1 489 3961-0

F. +43(0)1 489 3961-7

[mail@szabo-scandic.com](mailto:mail@szabo-scandic.com)

[www.szabo-scandic.com](http://www.szabo-scandic.com)

[linkedin.com/company/szaboscandic](https://www.linkedin.com/company/szaboscandic) 

**Datasheet for 005-0603****Goat IgG Fc Biotin****Overview**

|                      |   |
|----------------------|---|
| <b>Description:</b>  | Goat IgG Fc Fragment Biotin Conjugated - 005-0603 |
| <b>Item No.:</b>     | 005-0603  |
| <b>Size:</b>         | 1 mg  |
| <b>Applications:</b> | SDS-PAGE  |
| <b>Origin:</b>       | Goat  |

**Product Details**

|                           |   |
|---------------------------|---|
| <b>Background:</b>        | Secreted as part of the adaptive immune response by plasma B cells, immunoglobulin G constitutes 75% of serum immunoglobulins. Immunoglobulin G binds to viruses, bacteria, as well as fungi and facilitates their destruction or neutralization via agglutination (and thereby immobilizing them), activation of the compliment cascade, and opsonization for phagocytosis. This antibody possesses the F(c) region, recognized by high-affinity Fc receptor proteins. |
| <b>Synonyms:</b>          | Goat IgG F(c) fragment Biotin conjugation, Goat IgG Fc fragment BAC conjugate   |
| <b>Species of Origin:</b> | Goat  |
| <b>Conjugate:</b>         | Biotin  |
| <b>Format:</b>            | IgG Fc  |
| <b>Type:</b>              | Native Protein  |

**Target Details**

|                            |  |
|----------------------------|--|
| <b>Purity/Specificity:</b> | This product was prepared from normal serum delipidation, salt fractionation, ion exchange chromatography followed by papain digestion and extensive dialysis against the buffer stated above. Assay by immunoelectrophoresis resulted in a single precipitin arc against anti-biotin, anti-Goat IgG, anti-Goat IgG F(c) and anti-Goat Serum. No reaction was observed against anti-Goat IgG F(ab') <sub>2</sub> or anti-Papain. |
|----------------------------|--|

**Application Details**

|                             |          |
|-----------------------------|----------|
| <b>Tested Applications:</b> | SDS-PAGE |
|-----------------------------|----------|

**Application Note:** Goat IgG F(c) fragment Biotin conjugated has been tested by SDS-PAGE and is designed for immunofluorescence microscopy, fluorescence based plate assays (FLISA) and fluorescent western blotting. This product is also suitable for multiplex analysis, including multicolor imaging, utilizing various commercial platforms.

**Assay Dilutions:** All assays should be optimized by the user. Recommended dilutions (if any) may be listed below.

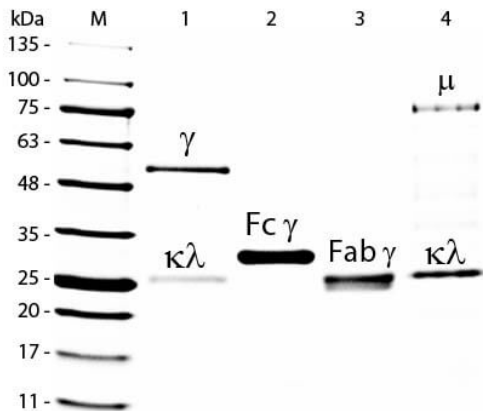
## Formulation

|                               |  |
|-------------------------------|--|
| <b>Physical State:</b>        | Lyophilized  |
| <b>Concentration:</b>         | 1.0 mg/mL by UV absorbance at 280 nm                                   |
| <b>Buffer:</b>                | 0.02 M Potassium Phosphate, 0.15 M Sodium Chloride, pH 7.2             |
| <b>Preservative:</b>          | 0.01% (w/v) Sodium Azide   |
| <b>Stabilizer:</b>            | 10 mg/mL Bovine Serum Albumin (BSA) - Immunoglobulin and Protease free |
| <b>Reconstitution Volume:</b> | 1.0 mL   |
| <b>Reconstitution Buffer:</b> | Restore with deionized water (or equivalent)                           |

## Shipping & Handling

|                            |   |
|----------------------------|---|
| <b>Shipping Condition:</b> | Ambient   |
| <b>Storage Condition:</b>  | Store vial at 4° C prior to restoration. For extended storage aliquot contents and freeze at -20° C or below. Avoid cycles of freezing and thawing. Centrifuge product if not completely clear after standing at room temperature. This product is stable for several weeks at 4° C as an undiluted liquid. Dilute only prior to immediate use. |
| <b>Expiration:</b>         | Expiration date is one (1) year from date of receipt.   |

## Images


**SDS-PAGE**

SDS-PAGE of Goat IgG Whole Molecule Rhodamine Conjugated (p/n 005-0002). Lane M: 5  $\mu$ L Opal Prestained Marker (p/n MB-210-0500). Lane 1: Reduced Goat IgG Whole Molecule Rhodamine Conjugated (p/n 005-0002). Lane 2: Reduced Goat IgG F(c) Fragment (p/n 005-0103). Lane 3: Reduced Goat IgG F(ab) Fragment (p/n 005-0105). Lane 4: Reduced Goat IgM Whole Molecule (p/n 005-0107). Load: 1  $\mu$ g for IgG, F(c) and F(ab); 3  $\mu$ g for IgM. Predicted/Observed size: IgG at 50 and 25 kDa; F(c) at 25 kDa; F(ab) at 25 kDa; IgM at 70 and 23 kDa. Observed F(c) Fragment migrates slightly higher.

**Disclaimer**

This product is for research use only and is not intended for therapeutic or diagnostic applications. Please contact a technical service representative for more information. All products of animal origin manufactured by Rockland Immunochemicals are derived from starting materials of North American origin. Collection was performed in United States Department of Agriculture (USDA) inspected facilities and all materials have been inspected and certified to be free of disease and suitable for exportation. All properties listed are typical characteristics and are not specifications. All suggestions and data are offered in good faith but without guarantee as conditions and methods of use of our products are beyond our control. All claims must be made within 30 days following the date of delivery. The prospective user must determine the suitability of our materials before adopting them on a commercial scale. Suggested uses of our products are not recommendations to use our products in violation of any patent or as a license under any patent of Rockland Immunochemicals, Inc. If you require a commercial license to use this material and do not have one, then return this material, unopened to: Rockland Inc., P.O. BOX 5199, Limerick, Pennsylvania, USA.