



SZABO SCANDIC

Part of Europa Biosite

Produktinformation



Forschungsprodukte & Biochemikalien



Zellkultur & Verbrauchsmaterial



Diagnostik & molekulare Diagnostik



Laborgeräte & Service

Weitere Information auf den folgenden Seiten!
See the following pages for more information!



Lieferung & Zahlungsart

siehe unsere [Liefer- und Versandbedingungen](#)

Zuschläge

- Mindermengenzuschlag
- Trockeneiszuschlag
- Gefahrgutzuschlag
- Expressversand

SZABO-SCANDIC HandelsgmbH

Quellenstraße 110, A-1100 Wien

T. +43(0)1 489 3961-0

F. +43(0)1 489 3961-7

mail@szabo-scandic.com

www.szabo-scandic.com

[linkedin.com/company/szaboscandic](https://www.linkedin.com/company/szaboscandic) 

Datasheet for 006-0102-0005**Guinea Pig IgG****Overview**

Description:	Guinea Pig IgG Whole Molecule - 006-0102-0005
Item No.:	006-0102-0005
Size:	5 mg
Applications:	SDS-PAGE, CHIP
Origin:	Guinea Pig

Product Details

Background:	Secreted as part of the adaptive immune response by plasma B cells, immunoglobulin G constitutes 75% of serum immunoglobulins. Immunoglobulin G binds to viruses, bacteria, as well as fungi and facilitates their destruction or neutralization via agglutination (and thereby immobilizing them), activation of the compliment cascade, and opsonization for phagocytosis. The whole IgG molecule possesses both the F(c) region, recognized by high-affinity Fc receptor proteins, as well as the F(ab) region possessing the epitope-recognition site. Both heavy and light chains of the antibody molecule are present.
Synonyms:	Guinea Pig Immunoglobulin G, GP IgG
Species of Origin:	Guinea Pig
Format:	IgG
Type:	Native Protein

Target Details

Purity/Specificity:	Guinea Pig IgG was prepared from normal serum by a multi-step process which includes delipidation, salt fractionation and ion exchange chromatography followed by extensive dialysis against the buffer stated above. Guinea Pig IgG whole molecule was assayed by immunoelectrophoresis resulted in a single precipitin arc against anti-Guinea Pig IgG and anti-Guinea Pig Serum.
----------------------------	---

Application Details

Tested Applications:	SDS-PAGE
Suggested Applications:	ChIP (Based on references)
Application Note:	Guinea Pig IgG whole molecule has been tested in SDS-Page and can be utilized as a control or standard reagent in Western Blotting and ELISA experiments.
Assay Dilutions:	All assays should be optimized by the user. Recommended dilutions (if any) may be listed below.
ELISA:	User Optimized
IHC:	User Optimized
WB:	User Optimized

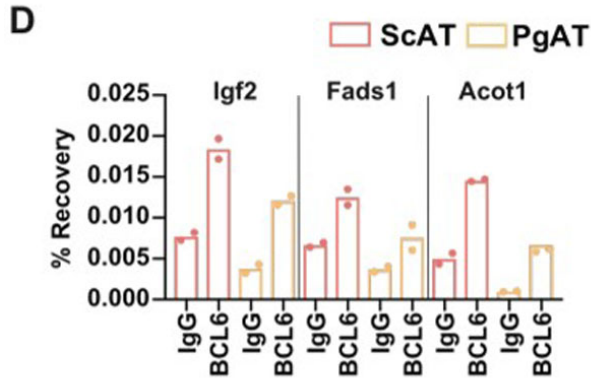
Formulation

Physical State:	Lyophilized
Concentration:	10 mg/ml by UV absorbance at 280 nm
Buffer:	0.02 M Potassium Phosphate, 0.15 M Sodium Chloride, pH 7.2
Preservative:	0.01% (w/v) Sodium Azide
Reconstitution Volume:	500 µL
Reconstitution Buffer:	Restore with deionized water (or equivalent)

Shipping & Handling

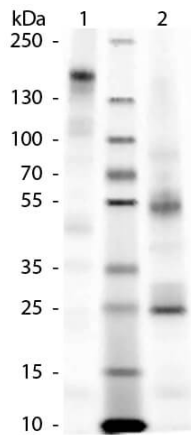
Shipping Condition:	Ambient
Storage Condition:	Store vial at 4° C prior to restoration. For extended storage aliquot contents and freeze at -20° C or below. Avoid cycles of freezing and thawing. Centrifuge product if not completely clear after standing at room temperature. Guinea Pig IgG whole molecule is stable for several weeks at 4° C as an undiluted liquid. Dilute only prior to immediate use.
Expiration:	Expiration date is one (1) year from date of receipt.

Images



ChIP

BCL6 controls shared genomic networks in ScAT and PgAT. (D) ChIP qPCR validation of ChIP-Seq-identified BCL6 binding sites in subcutaneous adipocytes from Adipo-Sun1- sfGFP-myc mice. Enrichment is plotted as % of input using technical duplicate control IgG and BCL6 immunoprecipitations from pooled chromatin. Figure S5. PMID: 30566857.



SDS-PAGE

SDS-Page of Guinea Pig IgG whole molecule. Lane 1: Guinea Pig IgG – Non-reduced. Lane 2: Guinea Pig IgG – Reduced. Load: 1.0 µg per lane. Predicted/Observed size: 25 & 55 kDa – Reduced, 160 kDa – Non-reduced for IgG whole molecule. Other band(s): None.

References

- Senagolage MD et al. Loss of transcriptional repression by BCL6 confers insulin sensitivity in the setting of obesity. *Cell Rep.* (2018)

Disclaimer

This product is for research use only and is not intended for therapeutic or diagnostic applications. Please contact a technical service representative for more information. All products of animal origin manufactured by Rockland Immunochemicals are derived from starting materials of North American origin. Collection was performed in United States Department of Agriculture (USDA) inspected facilities and all materials have been inspected and certified to be free of disease and suitable for exportation. All properties listed are typical characteristics and are not specifications. All suggestions and data are offered in good faith but without guarantee as conditions and methods of use of our products are beyond our control. All claims must be made within 30 days following the date of delivery. The prospective user must determine the suitability of our materials before adopting them on a commercial scale. Suggested uses of our products are not recommendations to use our products in violation of any patent or as a license under any patent of Rockland Immunochemicals, Inc. If you require a commercial license to use this material and do not have one, then return this material, unopened to: Rockland Inc., P.O. BOX 5199, Limerick, Pennsylvania, USA.