



SZABO SCANDIC

Part of Europa Biosite

Produktinformation



Forschungsprodukte & Biochemikalien



Zellkultur & Verbrauchsmaterial



Diagnostik & molekulare Diagnostik



Laborgeräte & Service

Weitere Information auf den folgenden Seiten!
See the following pages for more information!



Lieferung & Zahlungsart

siehe unsere [Liefer- und Versandbedingungen](#)

Zuschläge

- Mindermengenzuschlag
- Trockeneiszuschlag
- Gefahrgutzuschlag
- Expressversand

SZABO-SCANDIC HandelsgmbH

Quellenstraße 110, A-1100 Wien

T. +43(0)1 489 3961-0

F. +43(0)1 489 3961-7

mail@szabo-scandic.com

www.szabo-scandic.com

[linkedin.com/company/szaboscandic](https://www.linkedin.com/company/szaboscandic) 

Datasheet for 009-001-153S

CyclinD1 protein-GST fusion

Overview

| | |
|----------------------|--|
| Description: | CyclinD1 recombinant protein-GST fusion protein - 009-001-153S |
| Item No.: | 009-001-153S |
| Size: | 20 µg |
| Applications: | Biochemical Assay, Functional Assay |
| Origin: | Human |
| Expressed in: | E. coli |

Product Details

| | |
|---------------------------|--|
| Background: | CyclinD1 is a member of the cyclin family of proteins that are important regulators cyclin-dependent protein kinases (CDKs) (1). CyclinD1 forms a complex and functions as a regulatory subunit of CDK4 or CDK6 which are important during cell cycle G1/S transition. CyclinD1 has been shown to interact with the tumor suppressor protein Rb and the expression of CyclinD1 is positively regulated by Rb. Mutations, amplification and overexpression of CyclinD1 have been frequently observed in a variety of tumors and suggesting a role of this protein in tumorigenesis (2). CyclinD1 is ideal for investigators involved in Signaling Proteins, Cell Cycle Proteins, Cancer, and Cell Cycle research. |
| Synonyms: | BCL1, PRAD1, U21B31, D11S287E, G1/S-specific cyclin-D1, B-cell lymphoma 1 protein, BCL-1 oncogene, PRAD1 oncogene |
| Species of Origin: | Human |
| Expressed in: | E. coli |
| Type: | Recombinant Protein |

Target Details

| | |
|----------------------------|---|
| Gene Name: | CCND1 |
| Purity/Specificity: | Recombinant full-length human CyclinD1 was expressed in E. coli cells using an N-Terminal Glutathione-S-Transferase fusion protein. The purity was determined to be >85% by densitometry. |
| Relevant Links: | <ul style="list-style-type: none">• NCBI - NM_053056 |

Application Details

| | |
|--------------------------------|--|
| Suggested Applications: | Biochemical Assay, Functional Assay (Based on references) |
| Application Note: | CyclinD1 Protein is stored in 50mM Tris-HCl, pH 7.5, 150mM NaCl, 10mM glutathione, 0.1mM EDTA, 0.25mM DTT, 0.1mM PMSF, 25% glycerol. CyclinD1 Protein is suitable for use in Western Blot. Expect a band approximately ~ 61kDa on specific lysates or tissues. Specific conditions for reactivity should be optimized by the end user. |
| Assay Dilutions: | All assays should be optimized by the user. Recommended dilutions (if any) may be listed below. |
| WB: | User Optimized |

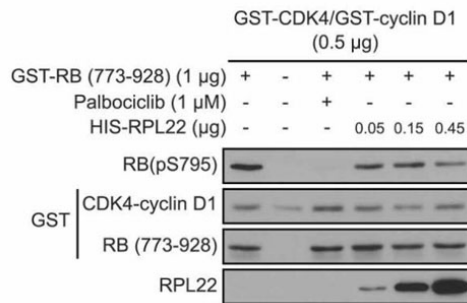
Formulation

| | |
|------------------------|---------------------------|
| Physical State: | Liquid (sterile filtered) |
| Concentration: | 0.2 µg/µL |
| Buffer: | See application note. |

Shipping & Handling

| | |
|----------------------------|---|
| Shipping Condition: | Dry Ice |
| Storage Condition: | Store product at -70°C. For optimal storage, aliquot target into smaller quantities after centrifugation and store at recommended temperature. For most favorable performance, avoid repeated handling and multiple freeze/thaw cycles. |
| Expiration: | Expiration date is one (1) year from date of receipt. |

Images

a

Immunoprecipitation

RPL22/eL22 directly binds and inhibits CDK4-cyclin D1 complex. (a) Immunoblots of the indicated proteins after in vitro kinase assay containing ATP and GST-CDK4 and GST-cyclin D1, with or without GST-RB (773–928), palbociclib and HIS-RPL22. RB(pS795): RB phosphorylated on serine 795. Figure 4.. PMID: 30874462.

References

- Del Toror N et al. Ribosomal protein RPL22/eL22 regulates the cell cycle by acting as an inhibitor of the CDK4-cyclin D complex. *Cell Cycle* (2019)

Disclaimer

This product is for research use only and is not intended for therapeutic or diagnostic applications. Please contact a technical service representative for more information. All products of animal origin manufactured by Rockland Immunochemicals are derived from starting materials of North American origin. Collection was performed in United States Department of Agriculture (USDA) inspected facilities and all materials have been inspected and certified to be free of disease and suitable for exportation. All properties listed are typical characteristics and are not specifications. All suggestions and data are offered in good faith but without guarantee as conditions and methods of use of our products are beyond our control. All claims must be made within 30 days following the date of delivery. The prospective user must determine the suitability of our materials before adopting them on a commercial scale. Suggested uses of our products are not recommendations to use our products in violation of any patent or as a license under any patent of Rockland Immunochemicals, Inc. If you require a commercial license to use this material and do not have one, then return this material, unopened to: Rockland Inc., P.O. BOX 5199, Limerick, Pennsylvania, USA.