



SZABO SCANDIC

Part of Europa Biosite

Produktinformation



Forschungsprodukte & Biochemikalien



Zellkultur & Verbrauchsmaterial



Diagnostik & molekulare Diagnostik



Laborgeräte & Service

Weitere Information auf den folgenden Seiten!
See the following pages for more information!



Lieferung & Zahlungsart

siehe unsere [Liefer- und Versandbedingungen](#)

Zuschläge

- Mindermengenzuschlag
- Trockeneiszuschlag
- Gefahrgutzuschlag
- Expressversand

SZABO-SCANDIC HandelsgmbH

Quellenstraße 110, A-1100 Wien

T. +43(0)1 489 3961-0

F. +43(0)1 489 3961-7

mail@szabo-scandic.com

www.szabo-scandic.com

[linkedin.com/company/szaboscandic](https://www.linkedin.com/company/szaboscandic) 

Datasheet for 009-001-311

IL-8 Human Recombinant Protein

Overview

Description:	IL-8 Human Recombinant Protein - 009-001-311
Item No.:	009-001-311
Size:	25 µg
Applications:	SDS-PAGE, WB
Origin:	Human

Product Details

Background:	Interleukin-8 is a chemokine produced by macrophages and other cell types such as epithelial cells. Human IL-8 (CXCL8) antibody is commonly used in many experiments focused around inflammation. IL-8 is ideal for investigators involved in Cancer, Immunology and Cardiovascular research.
Synonyms:	CXCL 8, CXCL8, 310C , AMCF 1, AMCF1, b ENAP, Beta thromboglobulin like protein, CXC chemokine ligand 8 , interleukin8, K60, LECT, LUCT, interleukin 8, IL-8
Species of Origin:	Human

Target Details

Gene Name:	IL-8
Purity/Specificity:	Purity greater than 95% as determined by analysis of RP-HPLC and reducing and non-reducing SDS-PAGE against a known standard.
Relevant Links:	<ul style="list-style-type: none">• UniProtKB - P10145• NCBI - P10145.1• GeneID - 3576

Application Details

Tested Applications:	SDS-PAGE, WB
-----------------------------	--------------

Application Note:	Human IL-8 recombinant protein has been tested in SDS-Page and western blot and is suitable as a control for polyclonal or monoclonal Anti-Interleukin-8 (CXCL8) in immunological assays.
Assay Dilutions:	All assays should be optimized by the user. Recommended dilutions (if any) may be listed below.
ChIP:	User Optimized
ELISA:	User Optimized
EMSA:	User Optimized
FC:	User Optimized
FLISA:	User Optimized
IF:	User Optimized
IHC:	User Optimized
IP:	User Optimized
Neutralization:	User Optimized
WB:	1.0 µg/mL

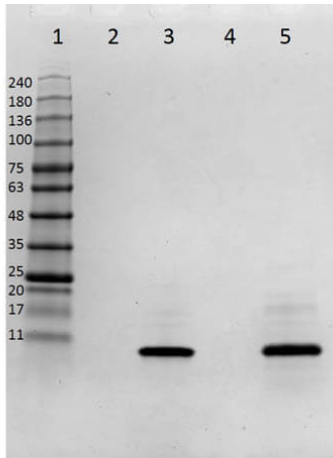
Formulation

Physical State:	Liquid
Concentration:	0.455
Buffer:	0.02 M Potassium Phosphate, 0.15 M Sodium Chloride, pH 7.2
Preservative:	None
Stabilizer:	None

Shipping & Handling

Shipping Condition:	Wet Ice
Storage Condition:	Store vial at -20° C prior to opening. Aliquot contents and freeze at -20° C or below for extended storage. Avoid cycles of freezing and thawing. Centrifuge product if not completely clear after standing at room temperature. Dilute only prior to immediate use.
Expiration:	Expiration date is six (6) months from date of receipt.

Images

**SDS-PAGE**

SDS PAGE of recombinant human IL-8 Protein. Lane 1: Molecular weight standard (p/n MB-210-0500) load 3uL. Lane 2: Empty. Lane 3: IL-8 Reduced load 1ug. Lane 4: Empty. Lane 5: IL-8 Non-Reduced load 1ug.

Disclaimer

This product is for research use only and is not intended for therapeutic or diagnostic applications. Please contact a technical service representative for more information. All products of animal origin manufactured by Rockland Immunochemicals are derived from starting materials of North American origin. Collection was performed in United States Department of Agriculture (USDA) inspected facilities and all materials have been inspected and certified to be free of disease and suitable for exportation. All properties listed are typical characteristics and are not specifications. All suggestions and data are offered in good faith but without guarantee as conditions and methods of use of our products are beyond our control. All claims must be made within 30 days following the date of delivery. The prospective user must determine the suitability of our materials before adopting them on a commercial scale. Suggested uses of our products are not recommendations to use our products in violation of any patent or as a license under any patent of Rockland Immunochemicals, Inc. If you require a commercial license to use this material and do not have one, then return this material, unopened to: Rockland Inc., P.O. BOX 5199, Limerick, Pennsylvania, USA.