



# SZABO SCANDIC

Part of Europa Biosite

## Produktinformation



Forschungsprodukte & Biochemikalien



Zellkultur & Verbrauchsmaterial



Diagnostik & molekulare Diagnostik



Laborgeräte & Service

Weitere Information auf den folgenden Seiten!  
See the following pages for more information!



### Lieferung & Zahlungsart

siehe unsere [Liefer- und Versandbedingungen](#)

### Zuschläge

- Mindermengenzuschlag
- Trockeneiszuschlag
- Gefahrgutzuschlag
- Expressversand

### SZABO-SCANDIC HandelsgmbH

Quellenstraße 110, A-1100 Wien

T. +43(0)1 489 3961-0

F. +43(0)1 489 3961-7

[mail@szabo-scandic.com](mailto:mail@szabo-scandic.com)

[www.szabo-scandic.com](http://www.szabo-scandic.com)

[linkedin.com/company/szaboscandic](https://www.linkedin.com/company/szaboscandic) 

Datasheet for 009-001-315

## MIP-1 alpha Human Recombinant Protein

### Overview

<b>Description:</b>	MIP-1 $\alpha$ Human Recombinant Protein - 009-001-315
<b>Item No.:</b>	009-001-315
<b>Size:</b>	20 $\mu$ g
<b>Applications:</b>	SDS-PAGE
<b>Origin:</b>	Human
<b>Expressed in:</b>	E. coli

### Product Details

<b>Background:</b>	Recombinant Human Macrophage Inflammatory Protein-1 (CCL3, MIP-1) produced in E. coli is a single, non-glycosylated, polypeptide chain containing 70 amino acids and having a molecular mass of 7820 Daltons.
<b>Synonyms:</b>	Human Macrophage Inflammatory Protein-1, CCL3 alpha cytokine, C-C motif chemokine 3, Small-inducible cytokine A3, MIP-1-alpha, Tonsillar lymphocyte LD78 alpha protein, G0/G1 switch regulatory protein 19-1, SIS-beta, PAT 464.1
<b>Species of Origin:</b>	Human
<b>Expressed in:</b>	E. coli
<b>Type:</b>	Recombinant Protein
<b>Low Endotoxin:</b>	Yes

### Target Details

<b>Gene Name:</b>	CCL3
<b>Purity/Specificity:</b>	Purity was determined to be greater than 97% by analysis by RP-HPLC and by reducing and non-reducing SDS-PAGE.
<b>Relevant Links:</b>	<ul style="list-style-type: none"><li>• <a href="#">NCBI</a></li><li>• <a href="#">UniProtKB - P10147</a></li></ul>

## Application Details

<b>Tested Applications:</b>	SDS-PAGE
<b>Application Note:</b>	MIP-1 $\alpha$ protein has been tested by SDS-PAGE and is suitable as a control for polyclonal or monoclonal anti-MIP-1 $\alpha$ in immunological assays.
<b>Assay Dilutions:</b>	All assays should be optimized by the user. Recommended dilutions (if any) may be listed below.
<b>Other:</b>	Biological Activity: Determined by its ability to chemoattract human monocytes using a concentration range of 0.5 - 8 ng/ml.  Endotoxin Level: Measured by LAL is 0.15EU/ $\mu$ g.

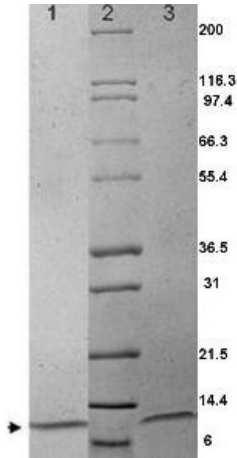
## Formulation

<b>Physical State:</b>	Lyophilized
<b>Concentration:</b>	0.1 mg/mL by UV absorbance at 280 nm
<b>Buffer:</b>	0.1% Trifluoroacetic acid
<b>Preservative:</b>	None
<b>Stabilizer:</b>	None
<b>Reconstitution Volume:</b>	20 $\mu$ l (20-200 $\mu$ l)
<b>Reconstitution Buffer:</b>	Restore with deionized water (or equivalent)

## Shipping & Handling

<b>Shipping Condition:</b>	Ambient
<b>Storage Condition:</b>	Store vial at 4° C prior to restoration. Dilute only prior to immediate use. Maintain sterility. This product DOES NOT contain preservative. DO NOT VORTEX. We recommend adding a carrier protein such as HSA or BSA to 0.1% (i.e. 1.0 mg/mL) . For best results aliquot contents and freeze at -20° C or colder. Avoid cycles of freezing and thawing. Centrifuge vial before each opening to dislodge contents from the cap and to clarify if contents are not clear after standing at room temperature.
<b>Expiration:</b>	Expiration date is six (6) months from date of receipt.

## Images



#### SDS-PAGE

SDS-PAGE shows bands corresponding to MIP-1a (1 $\mu$ g) in lane 1 (unreduced, arrowhead) and lane 3 (reduced).

Molecular weight estimation was made by comparison to pre-stained MW markers, lane 2.

## Disclaimer

This product is for research use only and is not intended for therapeutic or diagnostic applications. Please contact a technical service representative for more information. All products of animal origin manufactured by Rockland Immunochemicals are derived from starting materials of North American origin. Collection was performed in United States Department of Agriculture (USDA) inspected facilities and all materials have been inspected and certified to be free of disease and suitable for exportation. All properties listed are typical characteristics and are not specifications. All suggestions and data are offered in good faith but without guarantee as conditions and methods of use of our products are beyond our control. All claims must be made within 30 days following the date of delivery. The prospective user must determine the suitability of our materials before adopting them on a commercial scale. Suggested uses of our products are not recommendations to use our products in violation of any patent or as a license under any patent of Rockland Immunochemicals, Inc. If you require a commercial license to use this material and do not have one, then return this material, unopened to: Rockland Inc., P.O. BOX 5199, Limerick, Pennsylvania, USA.