



SZABO SCANDIC

Part of Europa Biosite

Produktinformation



Forschungsprodukte & Biochemikalien



Zellkultur & Verbrauchsmaterial



Diagnostik & molekulare Diagnostik



Laborgeräte & Service

Weitere Information auf den folgenden Seiten!
See the following pages for more information!



Lieferung & Zahlungsart

siehe unsere [Liefer- und Versandbedingungen](#)

Zuschläge

- Mindermengenzuschlag
- Trockeneiszuschlag
- Gefahrgutzuschlag
- Expressversand

SZABO-SCANDIC HandelsgmbH

Quellenstraße 110, A-1100 Wien

T. +43(0)1 489 3961-0

F. +43(0)1 489 3961-7

mail@szabo-scandic.com

www.szabo-scandic.com

[linkedin.com/company/szaboscandic](https://www.linkedin.com/company/szaboscandic) 

Datasheet for 009-001-B31

IL-17F Human Recombinant Protein

Overview

Description:	IL-17F Human Recombinant Protein - 009-001-B31
Item No.:	009-001-B31
Size:	25 µg
Applications:	SDS-PAGE
Origin:	Human
Expressed in:	E. coli

Product Details

Background:	Recombinant Human Interleukin-17-F is a non-glycosylated protein consisting of two 134 amino acid polypeptide chains that are cysteine linked homodimeric polypeptide chains with a molecular weight of 30 kDa. Homodimeric interleukin-17F is a member of the IL-17 family of six homodimeric proteins (IL-17A-17F). Activity studies reveal IL-17A to be the most potent, followed by IL-17A/F and IL-17F 100 fold lower than IL-17A.
Synonyms:	Interleukin-17F cytokine, IL-17F, Interleukin-24, IL-24, Cytokine ML-1
Species of Origin:	Human
Expressed in:	E. coli
Type:	Recombinant Protein
Low Endotoxin:	Yes

Target Details

Gene Name:	IL17F
Purity/Specificity:	Purity was determined to be approximately 97% by analysis by RP-HPLC and by reducing and non-reducing SDS-PAGE.
Relevant Links:	<ul style="list-style-type: none">• NCBI• UniProtKB - Q96PD4

Application Details

Tested Applications:	SDS-PAGE
Application Note:	IL-17F protein has been tested by SDS-PAGE and is suitable as a control for polyclonal or monoclonal anti-IL-17F in immunological assays.
Assay Dilutions:	All assays should be optimized by the user. Recommended dilutions (if any) may be listed below.
Other:	Biological Activity: The ED50 of recombinant human IL-17F, as determined by induction of IL-6 in NIH3T3 cells, is 10.18 ng/mL. Endotoxin Level: Measured by LAL is <0.01ng/μg or <0.1EU/μg.

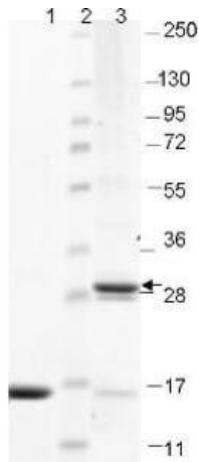
Formulation

Physical State:	Lyophilized
Concentration:	0.1 mg/mL by UV absorbance at 280 nm
Buffer:	0.1% Trifluoroacetic acid
Preservative:	None
Stabilizer:	None
Reconstitution Volume:	25μl (25-250μl)
Reconstitution Buffer:	Restore with deionized water (or equivalent)

Shipping & Handling

Shipping Condition:	Ambient
Storage Condition:	Store vial at 4° C prior to restoration. Dilute only prior to immediate use. Maintain sterility. This product DOES NOT contain preservative. DO NOT VORTEX. We recommend adding a carrier protein such as HSA or BSA to 0.1% (i.e. 1.0 mg/mL) . For best results aliquot contents and freeze at -20° C or colder. Avoid cycles of freezing and thawing. Centrifuge vial before each opening to dislodge contents from the cap and to clarify if contents are not clear after standing at room temperature.
Expiration:	Expiration date is six (6) months from date of receipt.

Images



SDS-PAGE

SDS-PAGE using Rockland's Recombinant Human IL-17F Protein shows bands corresponding to IL-17F (1 μ g) in lane 1 (reduced) and lane 3 (unreduced, arrowhead). Molecular weight estimation was made by comparison to prestained MW markers, lane 2.

Disclaimer

This product is for research use only and is not intended for therapeutic or diagnostic applications. Please contact a technical service representative for more information. All products of animal origin manufactured by Rockland Immunochemicals are derived from starting materials of North American origin. Collection was performed in United States Department of Agriculture (USDA) inspected facilities and all materials have been inspected and certified to be free of disease and suitable for exportation. All properties listed are typical characteristics and are not specifications. All suggestions and data are offered in good faith but without guarantee as conditions and methods of use of our products are beyond our control. All claims must be made within 30 days following the date of delivery. The prospective user must determine the suitability of our materials before adopting them on a commercial scale. Suggested uses of our products are not recommendations to use our products in violation of any patent or as a license under any patent of Rockland Immunochemicals, Inc. If you require a commercial license to use this material and do not have one, then return this material, unopened to: Rockland Inc., P.O. BOX 5199, Limerick, Pennsylvania, USA.