



SZABO SCANDIC

Part of Europa Biosite

Produktinformation



Forschungsprodukte & Biochemikalien



Zellkultur & Verbrauchsmaterial



Diagnostik & molekulare Diagnostik



Laborgeräte & Service

Weitere Information auf den folgenden Seiten!
See the following pages for more information!



Lieferung & Zahlungsart

siehe unsere [Liefer- und Versandbedingungen](#)

Zuschläge

- Mindermengenzuschlag
- Trockeneiszuschlag
- Gefahrgutzuschlag
- Expressversand

SZABO-SCANDIC HandelsgmbH

Quellenstraße 110, A-1100 Wien

T. +43(0)1 489 3961-0

F. +43(0)1 489 3961-7

mail@szabo-scandic.com

www.szabo-scandic.com

[linkedin.com/company/szaboscandic](https://www.linkedin.com/company/szaboscandic) 

Datasheet for 009-001-B66

IL-35 EBI3 Human Recombinant Protein

Overview

Description:	EBI-3 Human Recombinant Protein - 009-001-B66
Item No.:	009-001-B66
Size:	20 µg
Applications:	SDS-PAGE
Origin:	Human

Product Details

Background:	Epstein-Barr Virus Induced Gene-3 (EBI-3), is a secreted glycoprotein belonging to the hematopoietin receptor family and related to the p40 subunit of IL-12. It was identified by its induced expression in B-lymphocytes in response to Epstein-Barr virus infection. EBI-3 forms heterodimers with p28 to form IL-27 and with p35 to form IL-35. Both IL-27 and IL-35 have anti-inflammatory and regulatory activity. Recombinant Human EBI is a non-glycosylated polypeptide chain consisting of 209 amino acids with a molecular weight of 23.3 kDa.
Synonyms:	Epstein-Barr virus induced 3 protein, Interleukin-27 subunit beta, IL-27 subunit beta, IL-27B cytokine, Epstein-Barr virus-induced gene 3 protein, EBV-induced gene 3 protein, EBI-3, EBI3, IL-35, IL35
Species of Origin:	Human
Type:	Recombinant Protein
Low Endotoxin:	Yes

Target Details

Gene Name:	IL-27B
Purity/Specificity:	Recombinant protein corresponds to amino acids 21 to 229 of mature human EBI3. Purity is greater than 90% as determined by reducing and non-reducing SDS-PAGE and by analytical HPLC.
Relevant Links:	<ul style="list-style-type: none">• NCBI• UniProtKB - Q14213

Application Details

Tested Applications:	SDS-PAGE
Application Note:	EBI-3 protein has been tested by SDS-PAGE and is suitable as a control for polyclonal or monoclonal anti-EBI-3 in immunological assays. The product is lyophilized from a sterile filtered aqueous solution of 0.1% TFA and 0.5% mannitol.
Assay Dilutions:	All assays should be optimized by the user. Recommended dilutions (if any) may be listed below.
Other:	Biological Activity: Assay data for Human recombinant EBI-3 is based upon qualitative binding to anti-EBI-3 antibody. Endotoxin Level: Measured by LAL is <0.01ng/μg or <0.1EU/μg.

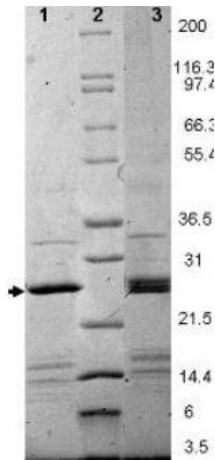
Formulation

Physical State:	Lyophilized
Concentration:	0.1 mg/mL by UV absorbance at 280 nm
Buffer:	0.1% Trifluoroacetic acid
Preservative:	None
Stabilizer:	0.5% Mannitol
Reconstitution Volume:	20μl (20-200μl)
Reconstitution Buffer:	Restore with deionized water (or equivalent)

Shipping & Handling

Shipping Condition:	Ambient
Storage Condition:	Store vial at 4° C prior to restoration. Dilute only prior to immediate use. Maintain sterility. This product DOES NOT contain preservative. DO NOT VORTEX. We recommend adding a carrier protein such as HSA or BSA to 0.1% (i.e. 1.0 mg/mL) . For best results aliquot contents and freeze at -20° C or colder. Avoid cycles of freezing and thawing. Centrifuge vial before each opening to dislodge contents from the cap and to clarify if contents are not clear after standing at room temperature.
Expiration:	Expiration date is six (6) months from date of receipt.

Images

**SDS-PAGE**

SDS-PAGE using Rockland's Recombinant Human EBI-3 Protein shows bands corresponding to EBI-3 (1 μ g) in lane 1 (unreduced, arrowhead) and lane 3 (reduced). Molecular weight estimation was made by comparison to prestained MW markers, lane 2.

Disclaimer

This product is for research use only and is not intended for therapeutic or diagnostic applications. Please contact a technical service representative for more information. All products of animal origin manufactured by Rockland Immunochemicals are derived from starting materials of North American origin. Collection was performed in United States Department of Agriculture (USDA) inspected facilities and all materials have been inspected and certified to be free of disease and suitable for exportation. All properties listed are typical characteristics and are not specifications. All suggestions and data are offered in good faith but without guarantee as conditions and methods of use of our products are beyond our control. All claims must be made within 30 days following the date of delivery. The prospective user must determine the suitability of our materials before adopting them on a commercial scale. Suggested uses of our products are not recommendations to use our products in violation of any patent or as a license under any patent of Rockland Immunochemicals, Inc. If you require a commercial license to use this material and do not have one, then return this material, unopened to: Rockland Inc., P.O. BOX 5199, Limerick, Pennsylvania, USA.