



SZABO SCANDIC

Part of Europa Biosite

Produktinformation



Forschungsprodukte & Biochemikalien



Zellkultur & Verbrauchsmaterial



Diagnostik & molekulare Diagnostik



Laborgeräte & Service

Weitere Information auf den folgenden Seiten!
See the following pages for more information!



Lieferung & Zahlungsart

siehe unsere [Liefer- und Versandbedingungen](#)

Zuschläge

- Mindermengenzuschlag
- Trockeneiszuschlag
- Gefahrgutzuschlag
- Expressversand

SZABO-SCANDIC HandelsgmbH

Quellenstraße 110, A-1100 Wien

T. +43(0)1 489 3961-0

F. +43(0)1 489 3961-7

mail@szabo-scandic.com

www.szabo-scandic.com

[linkedin.com/company/szaboscandic](https://www.linkedin.com/company/szaboscandic) 

Datasheet for 009-001-U71-0020

rHuman Ciliary NTF Protein

Overview

Description:	Human Ciliary Neurotrophic Factor Recombinant Protein - 009-001-U71-0020
Item No.:	009-001-U71-0020
Size:	20 µg
Applications:	SDS-PAGE
Origin:	Human
Expressed in:	E. coli

Product Details

Background:	Ciliary Neurotrophic Factor (CNTF) is a neurotrophic factor that promotes the survival of various neuronal cell types and may play an important role in the injury response in the nervous system. CNTF, like FGF acidic, FGF basic, and PD-ECGF (platelet-derived endothelial cell growth factor), does not possess a signal sequence that would allow secretion of the factor by classical secretion pathways (endoplasmic reticulum/Golgi system), but the mechanism underlying the release of CNTF is unknown. Recombinant human CNTF is a non-glycosylated protein, contains 199 amino acids, with a molecular weight of 22.7 kDa.
Synonyms:	None
Species of Origin:	Human
Expressed in:	E. coli
Type:	Recombinant Protein
Low Endotoxin:	Yes

Target Details

Gene Name:	CNTF
Purity/Specificity:	Ciliary Neurotrophic Factor purity was determined to be greater than 98% as determined by analysis by HpLC, UV-Spectroscopy at 280nm, and by reducing and non-reducing SDS-pAGE.
Relevant Links:	<ul style="list-style-type: none">• UniProtKB - P26441

Application Details

Tested Applications:	SDS-PAGE
Application Note:	Ciliary Neurotrophic Factor Recombinant Protein has been tested by SDS-PAGE and is suitable as a control for polyclonal or monoclonal anti-Ciliary Neurotrophic Factor in immunological assays.
Assay Dilutions:	All assays should be optimized by the user. Recommended dilutions (if any) may be listed below.
Other:	Endotoxin Level: Measured by kinetic LAL analysis and is typically ≤ 1 EU/ μ g protein. Biologic Activity: The activity is determined by the dose-dependent stimulation of TF-1 cells and is typically 0.1-0.6 ng/mL.

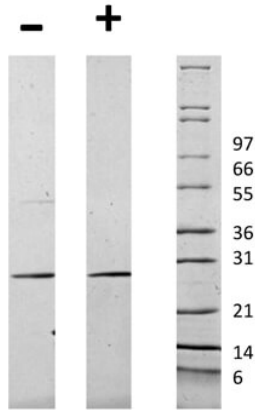
Formulation

Physical State:	Lyophilized
Buffer:	0.01 M Sodium Phosphate, pH 7.5
Preservative:	None
Stabilizer:	None
Reconstitution Volume:	20 μ l (20-200 μ l)
Reconstitution Buffer:	Restore with deionized water (or equivalent)

Shipping & Handling

Shipping Condition:	Ambient
Storage Condition:	Store vial at 4° C prior to restoration. Dilute only prior to immediate use. Maintain sterility. This product DOES NOT contain preservative. DO NOT VORTEX. We recommend adding a carrier protein such as HSA or BSA to 0.1% (i.e. 1.0 mg/mL). For best results aliquot contents and freeze at -20° C or colder. Avoid cycles of freezing and thawing. Centrifuge vial before each opening to dislodge contents from the cap and to clarify if contents are not clear after standing at room temperature.
Expiration:	Expiration date is six (6) months from date of receipt.

Images

**SDS-PAGE**

SDS-PAGE of Human Ciliary Neurotrophic Factor Recombinant Protein. Lane 1: 1 μ g Human CNTF in non-reducing conditions (-). Lane 2: 1 μ g Human CNTF in reducing conditions (+). Lane 3: Molecular weight marker. Human CNTF has a predicted MW of 22.7 kDa.

Disclaimer

This product is for research use only and is not intended for therapeutic or diagnostic applications. Please contact a technical service representative for more information. All products of animal origin manufactured by Rockland Immunochemicals are derived from starting materials of North American origin. Collection was performed in United States Department of Agriculture (USDA) inspected facilities and all materials have been inspected and certified to be free of disease and suitable for exportation. All properties listed are typical characteristics and are not specifications. All suggestions and data are offered in good faith but without guarantee as conditions and methods of use of our products are beyond our control. All claims must be made within 30 days following the date of delivery. The prospective user must determine the suitability of our materials before adopting them on a commercial scale. Suggested uses of our products are not recommendations to use our products in violation of any patent or as a license under any patent of Rockland Immunochemicals, Inc. If you require a commercial license to use this material and do not have one, then return this material, unopened to: Rockland Inc., P.O. BOX 5199, Limerick, Pennsylvania, USA.