



SZABO SCANDIC

Part of Europa Biosite

Produktinformation



Forschungsprodukte & Biochemikalien



Zellkultur & Verbrauchsmaterial



Diagnostik & molekulare Diagnostik



Laborgeräte & Service

Weitere Information auf den folgenden Seiten!
See the following pages for more information!



Lieferung & Zahlungsart

siehe unsere [Liefer- und Versandbedingungen](#)

Zuschläge

- Mindermengenzuschlag
- Trockeneiszuschlag
- Gefahrgutzuschlag
- Expressversand

SZABO-SCANDIC HandelsgmbH

Quellenstraße 110, A-1100 Wien

T. +43(0)1 489 3961-0

F. +43(0)1 489 3961-7

mail@szabo-scandic.com

www.szabo-scandic.com

[linkedin.com/company/szaboscandic](https://www.linkedin.com/company/szaboscandic) 

Datasheet for 009-001-U90-0025

rHuman globular ACRP-30 Protein

Overview

Description:	Human globular ACRP-30 Recombinant Protein - 009-001-U90-0025
Item No.:	009-001-U90-0025
Size:	25 µg
Applications:	SDS-PAGE, Cellular Assay
Origin:	Human
Expressed in:	E. coli

Product Details

Background:	Globular ACRP-30, gACRP-30, is a naturally occurring cleavage product of adiponectin, a molecule made exclusively by adipocytes. gACRP-30 is detected a relatively high concentrations in the serum and is thought to play an important role in hyperglycemia and insulin resistance. gACRP-30 signals through receptors, AdipoR1 and AdipoR2. Recombinant human gACRP-30 is a non-glycosylated protein, containing 145 amino acids, with a molecular weight of 16.7 kDa.
Synonyms:	Adiponectin, Adipose most abundant gene transcript 1 protein (apm-1), Adipocyte complement-related 30 kDa protein (ACRP30), adipolean, Gelatin-binding protein
Species of Origin:	Human
Expressed in:	E. coli
Type:	Recombinant Protein
Low Endotoxin:	Yes

Target Details

Gene Name:	ADIPOQ
Purity/Specificity:	globular AC-30 purity was determined to be greater than 98% as determined by analysis by UV-Spectroscopy at 280nm and by reducing and non-reducing SDS-pAGE.
Relevant Links:	<ul style="list-style-type: none">• UniProtKB - Q15848

Application Details

Tested Applications:	SDS-PAGE
Suggested Applications:	Cellular Assay (Based on references)
Application Note:	Human globular ACRP-30 Recombinant Protein has been tested by SDS-PAGE and biological activity and is suitable as a control for polyclonal or monoclonal anti-Human globular ACRP-30 in immunological assays. Lyophilized in 10 mM sodium phosphate, 0.75 mM DTT, pH 8.0.
Assay Dilutions:	All assays should be optimized by the user. Recommended dilutions (if any) may be listed below.
Other:	User Optimized

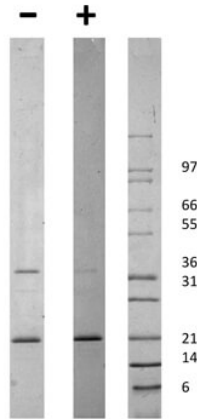
Formulation

Physical State:	Lyophilized
Buffer:	See application note.
Preservative:	None
Stabilizer:	None
Reconstitution Volume:	25 μ l (25-250 μ l)
Reconstitution Buffer:	Restore with deionized water (or equivalent)

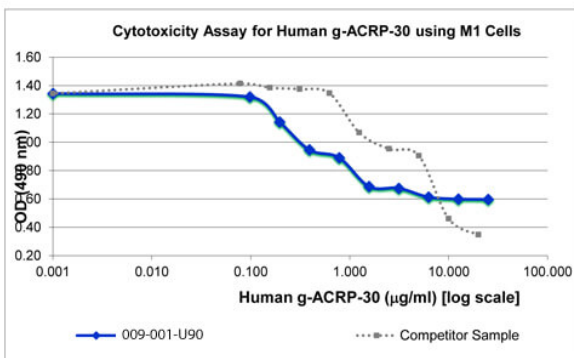
Shipping & Handling

Shipping Condition:	Ambient
Storage Condition:	Store vial at 4° C prior to restoration. Dilute only prior to immediate use. Maintain sterility. This product DOES NOT contain preservative. DO NOT VORTEX. We recommend adding a carrier protein such as HSA or BSA to 0.1% (i.e. 1.0 mg/mL). For best results aliquot contents and freeze at -20° C or colder. Avoid cycles of freezing and thawing. Centrifuge vial before each opening to dislodge contents from the cap and to clarify if contents are not clear after standing at room temperature.
Expiration:	Expiration date is six (6) months from date of receipt.

Images


SDS-PAGE

SDS-PAGE of Human globular ACRP-30 Recombinant Protein. Lane 1: 1 µg Human gACRP-30 in non-reducing conditions (-). Lane 2: 1 µg Human gACRP-30 in reducing conditions (+). Lane 3: Molecular weight marker. Human gACRP-30 has a predicted MW of 16.7 kDa.


SDS-PAGE

Bioactivity of Human globular ACRP-30 Recombinant Protein. Serial dilutions of Human gACRP-30, starting at 25 µg/mL, were added to M1 cells. After 66 hours, cell viability was measured and the linear portion of the curve was used to calculate the ED50. The ED50 of Human gACRP-30 is 0.36-0.54 µg/mL. This value is comparable to the typical expected range of 1-2.5 µg/mL.

Disclaimer

This product is for research use only and is not intended for therapeutic or diagnostic applications. Please contact a technical service representative for more information. All products of animal origin manufactured by Rockland Immunochemicals are derived from starting materials of North American origin. Collection was performed in United States Department of Agriculture (USDA) inspected facilities and all materials have been inspected and certified to be free of disease and suitable for exportation. All properties listed are typical characteristics and are not specifications. All suggestions and data are offered in good faith but without guarantee as conditions and methods of use of our products are beyond our control. All claims must be made within 30 days following the date of delivery. The prospective user must determine the suitability of our materials before adopting them on a commercial scale. Suggested uses of our products are not recommendations to use our products in violation of any patent or as a license under any patent of Rockland Immunochemicals, Inc. If you require a commercial license to use this material and do not have one, then return this material, unopened to: Rockland Inc., P.O. BOX 5199, Limerick, Pennsylvania, USA.