



SZABO SCANDIC

Part of Europa Biosite

Produktinformation



Forschungsprodukte & Biochemikalien



Zellkultur & Verbrauchsmaterial



Diagnostik & molekulare Diagnostik



Laborgeräte & Service

Weitere Information auf den folgenden Seiten!
See the following pages for more information!



Lieferung & Zahlungsart

siehe unsere [Liefer- und Versandbedingungen](#)

Zuschläge

- Mindermengenzuschlag
- Trockeneiszuschlag
- Gefahrgutzuschlag
- Expressversand

SZABO-SCANDIC HandelsgmbH

Quellenstraße 110, A-1100 Wien

T. +43(0)1 489 3961-0

F. +43(0)1 489 3961-7

mail@szabo-scandic.com

www.szabo-scandic.com

[linkedin.com/company/szaboscandic](https://www.linkedin.com/company/szaboscandic) 

Datasheet for 009-001-V61-0010
rHuman IL-21 Protein**Overview**

Description:	Human Interleukin-21 Recombinant Protein - 009-001-V61-0010
Item No.:	009-001-V61-0010
Size:	10 µg
Applications:	SDS-PAGE, Cellular Assay
Origin:	Human
Expressed in:	E. coli

Product Details

Background: Interleukin-21 (IL-21) is a member of the common gamma-chain family of cytokines (includes IL-2, IL-4, IL-7, IL-9, IL-13, and IL-15) and is expressed by activated CD4+ T cells. IL-21 has a private receptor known as IL-21R, which is expressed on T, B, and NK cells. Within the B cell lineage, IL-21 regulates IgG1 production and cooperates with IL-4 for the production of multiple Ab classes in vivo. Initial studies have demonstrated that IL-21 has pleiotropic effects on the proliferation, differentiation, and effector functions of B, T, natural killer, and dendritic cells. Recombinant human IL-21 is a non-glycosylated protein, containing 133 amino acids, with a total molecular weight of 15.5 kDa.

Synonyms:	Za11
Species of Origin:	Human
Expressed in:	E. coli
Type:	Recombinant Protein
Low Endotoxin:	Yes

Target Details

Gene Name:	IL21
Purity/Specificity:	Interleukin-21 purity was determined to be greater than 95% as determined by HpLC, analysis by UV-Spectroscopy at 280nm, and by reducing and non-reducing SDS-pAGE.
Relevant Links:	<ul style="list-style-type: none">• UniProtKB - Q9HBE4

Application Details

Tested Applications:	SDS-PAGE
Suggested Applications:	Cellular Assay (Based on references)
Application Note:	Interleukin-21 Recombinant Protein has been tested by SDS-PAGE and biological activity and is suitable as a control for polyclonal or monoclonal anti-Interleukin-21 in immunological assays.
Assay Dilutions:	All assays should be optimized by the user. Recommended dilutions (if any) may be listed below.
Other:	Endotoxin Level: Measured by kinetic LAL analysis and is typically ≤ 1 EU/ μ g protein. Biologic Activity: The activity is determined by the dose-dependent stimulation of B9 cells and is typically less than 50 ng/mL.

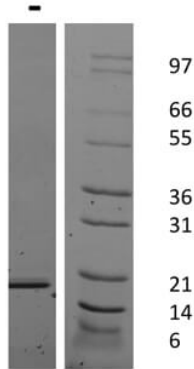
Formulation

Physical State:	Lyophilized
Buffer:	0.01 M Sodium Phosphate, pH 7.5
Preservative:	None
Stabilizer:	None
Reconstitution Volume:	10 μ l (10-100 μ l)
Reconstitution Buffer:	Restore with deionized water (or equivalent)

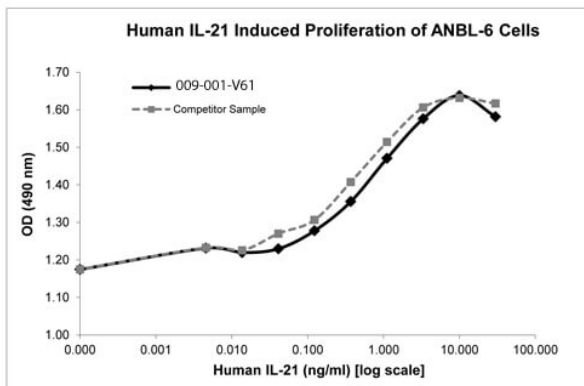
Shipping & Handling

Shipping Condition:	Ambient
Storage Condition:	Store vial at -20° C prior to restoration. Dilute only prior to immediate use. Maintain sterility. This product DOES NOT contain preservative. DO NOT VORTEX. For best results aliquot contents and freeze at -20° C or colder. Avoid cycles of freezing and thawing. Centrifuge vial before each opening to dislodge contents from the cap and to clarify if contents are not clear after standing at room temperature.
Expiration:	Expiration date is six (6) months from date of receipt.

Images


SDS-PAGE

SDS-PAGE of Human Interleukin-21 Recombinant Protein.
 Lane 1: 1 µg Human IL-21 in non-reducing conditions (-).
 Lane 2: Molecular weight marker. Human IL-21 has a predicted MW of 15 kDa.


SDS-PAGE

Bioactivity of Human Interleukin-21 Recombinant Protein.
 Serial dilutions of Human IL-21 (starting at 30 ng/mL) were added to ANBL-6 cells. After 84 hours, cell proliferation was measured and the linear portion of the curve was used to calculate the ED50. The ED50 of Human IL-21 is between 0.48-0.73 ng/mL.

Disclaimer

This product is for research use only and is not intended for therapeutic or diagnostic applications. Please contact a technical service representative for more information. All products of animal origin manufactured by Rockland Immunochemicals are derived from starting materials of North American origin. Collection was performed in United States Department of Agriculture (USDA) inspected facilities and all materials have been inspected and certified to be free of disease and suitable for exportation. All properties listed are typical characteristics and are not specifications. All suggestions and data are offered in good faith but without guarantee as conditions and methods of use of our products are beyond our control. All claims must be made within 30 days following the date of delivery. The prospective user must determine the suitability of our materials before adopting them on a commercial scale. Suggested uses of our products are not recommendations to use our products in violation of any patent or as a license under any patent of Rockland Immunochemicals, Inc. If you require a commercial license to use this material and do not have one, then return this material, unopened to: Rockland Inc., P.O. BOX 5199, Limerick, Pennsylvania, USA.