



SZABO SCANDIC

Part of Europa Biosite

Produktinformation



Forschungsprodukte & Biochemikalien



Zellkultur & Verbrauchsmaterial



Diagnostik & molekulare Diagnostik



Laborgeräte & Service

Weitere Information auf den folgenden Seiten!
See the following pages for more information!



Lieferung & Zahlungsart

siehe unsere [Liefer- und Versandbedingungen](#)

Zuschläge

- Mindermengenzuschlag
- Trockeneiszuschlag
- Gefahrgutzuschlag
- Expressversand

SZABO-SCANDIC HandelsgmbH

Quellenstraße 110, A-1100 Wien

T. +43(0)1 489 3961-0

F. +43(0)1 489 3961-7

mail@szabo-scandic.com

www.szabo-scandic.com

[linkedin.com/company/szaboscandic](https://www.linkedin.com/company/szaboscandic) 

Datasheet for 009-001-W05-0010

rHuman Neuregulin 1Beta Protein

Overview

Description:	Human Neuregulin 1-beta Recombinant Protein - 009-001-W05-0010
Item No.:	009-001-W05-0010
Size:	10 µg
Applications:	SDS-PAGE
Origin:	Human
Expressed in:	E. coli

Product Details

Background:	Neuregulin 1-beta (NRG1) is one of many isoforms of NRG that contains a soluble EGF-like domain. Alpha and beta variants are distinguished by difference in length at the C terminus. The EGF-like domain signals through receptors ErbB2, ErbB3, and ErbB4 to act as a growth factor. NRG isoforms are particularly important for nervous system and cardiovascular development. Recombinant human NRG1-beta is a non-glycosylated protein, containing 66 amino acids, with a molecular weight of 7.6 kDa.
Synonyms:	Acetylcholine receptor-inducing activity (ARIA), Breast cancer cell differentiation factor p45, Glial growth factor, Heregulin, Neu differentiation factor, NGR beta 1, heregulin, HRG1 beta, Sensory and motor neuron-derived factor
Species of Origin:	Human
Expressed in:	E. coli
Type:	Recombinant Protein
Low Endotoxin:	Yes

Target Details

Gene Name:	NRG1
Purity/Specificity:	Neuregulin 1-beta purity was determined to be greater than 95% as determined by reducing and non-reducing SDS-pAGE.
Relevant Links:	<ul style="list-style-type: none">• UniProtKB - Q02297

Application Details

Tested Applications:	SDS-PAGE
Application Note:	Neuregulin 1-beta Recombinant Protein has been tested by SDS-PAGE and is suitable as a control for polyclonal or monoclonal anti-Neuregulin 1-beta in immunological assays.
Assay Dilutions:	All assays should be optimized by the user. Recommended dilutions (if any) may be listed below.
Other:	Endotoxin Level: Measured by kinetic LAL analysis and is typically ≤ 1 EU/ μ g protein. Biologic Activity: The activity is determined by the ability to stimulate proliferation of MC-7 cells under serum free conditions and is typically less than 0.3 ng/mL.

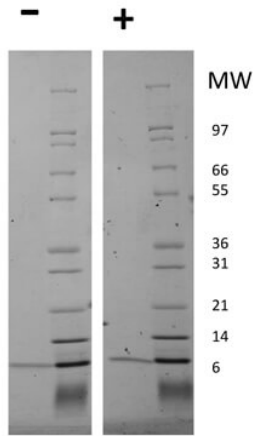
Formulation

Physical State:	Lyophilized
Concentration:	0.1mg/ml
Buffer:	0.1% Trifluoroacetic acid
Preservative:	None
Stabilizer:	None
Reconstitution Volume:	10 μ l (10-100 μ l)
Reconstitution Buffer:	Restore with deionized water (or equivalent)

Shipping & Handling

Shipping Condition:	Ambient
Storage Condition:	Store vial at 4° C prior to restoration. Dilute only prior to immediate use. Maintain sterility. This product DOES NOT contain preservative. DO NOT VORTEX. We recommend adding a carrier protein such as HSA or BSA to 0.1% (i.e. 1.0 mg/mL). For best results aliquot contents and freeze at -20° C or colder. Avoid cycles of freezing and thawing. Centrifuge vial before each opening to dislodge contents from the cap and to clarify if contents are not clear after standing at room temperature.
Expiration:	Expiration date is six (6) months from date of receipt.

Images

**SDS-PAGE**

SDS-PAGE of Human Neuregulin 1-beta Recombinant Protein. Lane 1: 1 μ g Human NRG1-beta in non-reducing conditions (-). Lane 2: Molecular weight marker. Lane 3: 1 μ g Human NRG1-beta in reducing conditions (+). Lane 4: Molecular weight marker. Human NRG1-beta has a predicted MW of 7.6 kDa.

Disclaimer

This product is for research use only and is not intended for therapeutic or diagnostic applications. Please contact a technical service representative for more information. All products of animal origin manufactured by Rockland Immunochemicals are derived from starting materials of North American origin. Collection was performed in United States Department of Agriculture (USDA) inspected facilities and all materials have been inspected and certified to be free of disease and suitable for exportation. All properties listed are typical characteristics and are not specifications. All suggestions and data are offered in good faith but without guarantee as conditions and methods of use of our products are beyond our control. All claims must be made within 30 days following the date of delivery. The prospective user must determine the suitability of our materials before adopting them on a commercial scale. Suggested uses of our products are not recommendations to use our products in violation of any patent or as a license under any patent of Rockland Immunochemicals, Inc. If you require a commercial license to use this material and do not have one, then return this material, unopened to: Rockland Inc., P.O. BOX 5199, Limerick, Pennsylvania, USA.