



# SZABO SCANDIC

Part of Europa Biosite

## Produktinformation



Forschungsprodukte & Biochemikalien



Zellkultur & Verbrauchsmaterial



Diagnostik & molekulare Diagnostik



Laborgeräte & Service

Weitere Information auf den folgenden Seiten!  
See the following pages for more information!



### Lieferung & Zahlungsart

siehe unsere [Liefer- und Versandbedingungen](#)

### Zuschläge

- Mindermengenzuschlag
- Trockeneiszuschlag
- Gefahrgutzuschlag
- Expressversand

### SZABO-SCANDIC HandelsgmbH

Quellenstraße 110, A-1100 Wien

T. +43(0)1 489 3961-0

F. +43(0)1 489 3961-7

[mail@szabo-scandic.com](mailto:mail@szabo-scandic.com)

[www.szabo-scandic.com](http://www.szabo-scandic.com)

[linkedin.com/company/szaboscandic](https://www.linkedin.com/company/szaboscandic) 

Datasheet for 009-001-W18-0100

## rHuman RELM beta Protein

### Overview

<b>Description:</b>	Human RELM beta Recombinant Protein - 009-001-W18-0100
<b>Item No.:</b>	009-001-W18-0100
<b>Size:</b>	100 µg
<b>Applications:</b>	SDS-PAGE
<b>Origin:</b>	Human
<b>Expressed in:</b>	E. coli

### Product Details

<b>Background:</b>	Resistin-Like Molecule-beta (RELM- β) is a member of a recently identified family of secreted proteins containing conserved cysteines in their C terminus. The RELM family consists of Resistin (also called FIZZ3), RELM-α (FIZZ1), and RELM-γ. Only Resistin and RELM-β were found in humans whereas all four RELM family members have been identified in rodents. Recombinant human RELM-β is a non-glycosylated, disulfide-linked homodimer, containing two 89 amino acid chains, with a total molecular weight of 19 kDa.
<b>Synonyms:</b>	FIZZ2
<b>Species of Origin:</b>	Human
<b>Expressed in:</b>	E. coli
<b>Type:</b>	Recombinant Protein
<b>Low Endotoxin:</b>	Yes

### Target Details

<b>Gene Name:</b>	RELM-beta
<b>Purity/Specificity:</b>	RELM beta purity was determined to be greater than 90% as determined by analysis by UV-Spectroscopy at 280nm.
<b>Relevant Links:</b>	<ul style="list-style-type: none"><li>• <a href="#">UniProtKB - Q2UXL7</a></li></ul>

## Application Details

<b>Tested Applications:</b>	SDS-PAGE
<b>Application Note:</b>	RELM beta Recombinant Protein has been tested by SDS-PAGE and is suitable as a control for polyclonal or monoclonal anti-RELM beta in immunological assays.
<b>Assay Dilutions:</b>	All assays should be optimized by the user. Recommended dilutions (if any) may be listed below.
<b>Other:</b>	Endotoxin Level: Measured by kinetic LAL analysis and is typically $\leq 1$ EU/ $\mu$ g protein. Biologic Activity: There is no biological assay available at this time.

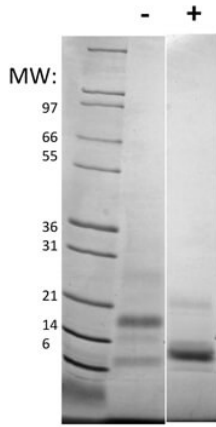
## Formulation

<b>Physical State:</b>	Lyophilized
<b>Buffer:</b>	0.1% Trifluoroacetic acid
<b>Preservative:</b>	None
<b>Stabilizer:</b>	None
<b>Reconstitution Volume:</b>	100 $\mu$ L
<b>Reconstitution Buffer:</b>	Restore with deionized water (or equivalent)

## Shipping & Handling

<b>Shipping Condition:</b>	Ambient
<b>Storage Condition:</b>	Store vial at 4° C prior to restoration. Dilute only prior to immediate use. Maintain sterility. This product DOES NOT contain preservative. DO NOT VORTEX. We recommend adding a carrier protein such as HSA or BSA to 0.1% (i.e. 1.0 mg/mL). For best results aliquot contents and freeze at -20° C or colder. Avoid cycles of freezing and thawing. Centrifuge vial before each opening to dislodge contents from the cap and to clarify if contents are not clear after standing at room temperature.
<b>Expiration:</b>	Expiration date is six (6) months from date of receipt.

## Images



#### SDS-PAGE

SDS-PAGE of Human RELM beta Recombinant Protein. Lane 1: Molecular weight marker. Lane 2: 1 µg Human Relm beta in non-reducing conditions (-). Lane 3: 1 µg Human Relm beta in reducing conditions (+). Human Relm beta is predicted to be a homodimer with a predicted MW of 19 kDa.

## Disclaimer

This product is for research use only and is not intended for therapeutic or diagnostic applications. Please contact a technical service representative for more information. All products of animal origin manufactured by Rockland Immunochemicals are derived from starting materials of North American origin. Collection was performed in United States Department of Agriculture (USDA) inspected facilities and all materials have been inspected and certified to be free of disease and suitable for exportation. All properties listed are typical characteristics and are not specifications. All suggestions and data are offered in good faith but without guarantee as conditions and methods of use of our products are beyond our control. All claims must be made within 30 days following the date of delivery. The prospective user must determine the suitability of our materials before adopting them on a commercial scale. Suggested uses of our products are not recommendations to use our products in violation of any patent or as a license under any patent of Rockland Immunochemicals, Inc. If you require a commercial license to use this material and do not have one, then return this material, unopened to: Rockland Inc., P.O. BOX 5199, Limerick, Pennsylvania, USA.