



SZABO SCANDIC

Part of Europa Biosite

Produktinformation



Forschungsprodukte & Biochemikalien



Zellkultur & Verbrauchsmaterial



Diagnostik & molekulare Diagnostik



Laborgeräte & Service

Weitere Information auf den folgenden Seiten!
See the following pages for more information!



Lieferung & Zahlungsart

siehe unsere [Liefer- und Versandbedingungen](#)

Zuschläge

- Mindermengenzuschlag
- Trockeneiszuschlag
- Gefahrgutzuschlag
- Expressversand

SZABO-SCANDIC HandelsgmbH

Quellenstraße 110, A-1100 Wien

T. +43(0)1 489 3961-0

F. +43(0)1 489 3961-7

mail@szabo-scandic.com

www.szabo-scandic.com

[linkedin.com/company/szaboscandic](https://www.linkedin.com/company/szaboscandic) 

Datasheet for 010-001-310

rMouse IL-6 Protein

Overview

Description:	IL-6 Mouse Recombinant Protein - 010-001-310
Item No.:	010-001-310
Size:	10 µg
Applications:	SDS-PAGE, IHC, WB
Origin:	Mouse
Expressed in:	E. coli

Product Details

Background:	Interleukin (IL)-6, also known as BCDG, BCGF and BSF-2, is an important proinflammatory and immunoregulatory cytokine expressed by various cells. Interleukin-6 has been shown to inhibit the growth of early stage and to promote the proliferation of advanced stage melanoma cells in vitro. Recombinant Mouse IL-6 produced in E. coli is a single, non-glycosylated polypeptide chain containing 187 amino acids and having a molecular mass of 21,709 Daltons.
Synonyms:	Interleukin-6 cytokine, IL-6, B-cell stimulatory factor 2, BSF-2, Interferon beta-2, IFN-beta-2, Hybridoma growth factor, CTL differentiation factor, CDF, Interleukin HP-1
Species of Origin:	Mouse
Expressed in:	E. coli
Type:	Recombinant Protein
Low Endotoxin:	Yes

Target Details

Gene Name:	Il6
Purity/Specificity:	Purity greater than 95% as determined by reducing and non-reducing SDS-PAGE.
Relevant Links:	<ul style="list-style-type: none">• NCBI• UniProtKB - P08505

Application Details

Tested Applications:	SDS-PAGE
Suggested Applications:	IHC, WB (Based on references)
Application Note:	Interleukin-6 (IL-6) has been tested by SDS-PAGE and is suitable as a control for polyclonal or monoclonal anti-Interleukin-6 (IL-6) in immunological assays. It is recommended to reconstitute the lyophilized recombinant M-IL-6 in 10 mM HCl to 0.1-1.0 mg/mL to regain full activity; this can then be further diluted to other aqueous solutions.
Assay Dilutions:	All assays should be optimized by the user. Recommended dilutions (if any) may be listed below.
Other:	Biological Activity: Recombinant mouse IL-6 is fully biologically active when compared to standards. The ED50, as determined by dose-dependent induction of 7TD1 cell proliferation, is 2.4-3.6 pg/mL. Endotoxin Level: Measured by LAL is 0.05 EUs/μg (with a 50% confidence range).

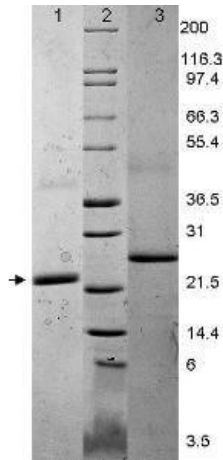
Formulation

Physical State:	Lyophilized
Concentration:	0.1 mg/mL by UV absorbance at 280 nm
Buffer:	0.1% Trifluoroacetic acid
Preservative:	None
Stabilizer:	None
Reconstitution Volume:	100 μL
Reconstitution Buffer:	Restore with deionized water (or equivalent)

Shipping & Handling

Shipping Condition:	Ambient
Storage Condition:	Store vial at 4° C prior to restoration. Dilute only prior to immediate use. Maintain sterility. This product DOES NOT contain preservative. DO NOT VORTEX. We recommend adding a carrier protein such as HSA or BSA to 0.1% (i.e. 1.0 mg/mL) . For best results aliquot contents and freeze at -20° C or colder. Avoid cycles of freezing and thawing. Centrifuge vial before each opening to dislodge contents from the cap and to clarify if contents are not clear after standing at room temperature.
Expiration:	Expiration date is six (6) months from date of receipt.

Images



SDS-PAGE

SDS-PAGE using Rockland's Recombinant Mouse IL-6 Protein shows bands corresponding to IL-6 (1 μ g) in lane 1 (unreduced, arrowhead) and lane 3 (reduced). Molecular weight estimation was made by comparison to prestained MW markers, lane 2.

References

- Turnis M. et al. Requirement for Anti-Apoptotic MCL-1 during Early Erythropoiesis. *Blood* (2020)

Disclaimer

This product is for research use only and is not intended for therapeutic or diagnostic applications. Please contact a technical service representative for more information. All products of animal origin manufactured by Rockland Immunochemicals are derived from starting materials of North American origin. Collection was performed in United States Department of Agriculture (USDA) inspected facilities and all materials have been inspected and certified to be free of disease and suitable for exportation. All properties listed are typical characteristics and are not specifications. All suggestions and data are offered in good faith but without guarantee as conditions and methods of use of our products are beyond our control. All claims must be made within 30 days following the date of delivery. The prospective user must determine the suitability of our materials before adopting them on a commercial scale. Suggested uses of our products are not recommendations to use our products in violation of any patent or as a license under any patent of Rockland Immunochemicals, Inc. If you require a commercial license to use this material and do not have one, then return this material, unopened to: Rockland Inc., P.O. BOX 5199, Limerick, Pennsylvania, USA.