



# SZABO SCANDIC

Part of Europa Biosite

## Produktinformation



Forschungsprodukte & Biochemikalien



Zellkultur & Verbrauchsmaterial



Diagnostik & molekulare Diagnostik



Laborgeräte & Service

Weitere Information auf den folgenden Seiten!  
See the following pages for more information!



### Lieferung & Zahlungsart

siehe unsere [Liefer- und Versandbedingungen](#)

### Zuschläge

- Mindermengenzuschlag
- Trockeneiszuschlag
- Gefahrgutzuschlag
- Expressversand

### SZABO-SCANDIC HandelsgmbH

Quellenstraße 110, A-1100 Wien

T. +43(0)1 489 3961-0

F. +43(0)1 489 3961-7

[mail@szabo-scandic.com](mailto:mail@szabo-scandic.com)

[www.szabo-scandic.com](http://www.szabo-scandic.com)

[linkedin.com/company/szaboscandic](https://www.linkedin.com/company/szaboscandic) 

Datasheet for 010-001-332

## Mouse IgG2a Kappa isotype Control

### Overview

<b>Description:</b>	Mouse IgG2a Kappa ( $\kappa$ ) Isotype Control - 010-001-332
<b>Item No.:</b>	010-001-332
<b>Size:</b>	1 mg
<b>Applications:</b>	ELISA, SDS-PAGE, WB
<b>Origin:</b>	Mouse

### Product Details

<b>Background:</b>	Mouse isotype controls are used in flow cytometry, western blot and ELISA and differentiate between immunoglobulin classes and subclasses. Isotype controls allow for the genetic variations or differences in the constant regions of the heavy and light chains. In mouse there are six relevant heavy chain isotypes and two light chain isotypes: heavy chain alpha - IgA, gamma - IgG 1, 2a, 2b, 3 and $\mu$ - IgM, light chain kappa and lambda.
<b>Synonyms:</b>	Mouse IgG2a isotype control, Mouse IgG2a subclass isotype control, Mouse IgG2a Kappa
<b>Species of Origin:</b>	Mouse
<b>Clone ID:</b>	M2AK
<b>Format:</b>	IgG2a
<b>Type:</b>	Native Protein

### Target Details

<b>Purity/Specificity:</b>	Mouse Isotype control has been prepared from concentrated cell culture supernatant by immunoaffinity chromatography using protein A. Assay by immunoelectrophoresis resulted in a single precipitin arc against anti-Mouse IgG2a and anti-Mouse serum. Isotyping assay resulted non-reactive with antisera to mouse IgG1, IgG2b, IgG3, IgA, IgM. Light chain composition has been confirmed by SDS-PAGE.
<b>Relevant Links:</b>	<ul style="list-style-type: none"><li><a href="#">010-001-332 SDS</a></li></ul>

### Application Details

<b>Tested Applications:</b>	ELISA, SDS-PAGE, WB
<b>Application Note:</b>	Mouse IgG2a kappa isotype control has been tested in SDS-Page, ELISA, and western blot and can be utilized as a control or standard reagent in Flow cytometry, Western Blotting, and ELISA experiments where determination of sample isotype is important.
<b>Assay Dilutions:</b>	All assays should be optimized by the user. Recommended dilutions (if any) may be listed below.
<b>ELISA:</b>	User Optimized
<b>FC:</b>	1:1000-1:5000
<b>FLISA:</b>	User Optimized
<b>IF:</b>	User Optimized
<b>WB:</b>	User Optimized

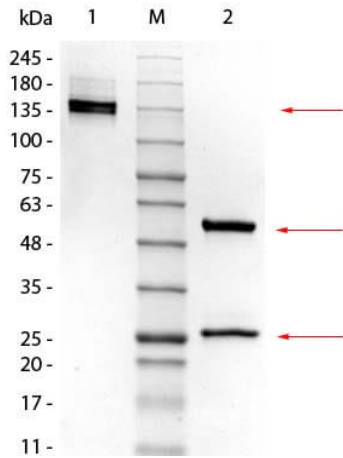
## Formulation

<b>Physical State:</b>	Liquid (sterile filtered)
<b>Concentration:</b>	1.009 mg/mL by UV absorbance at 280 nm
<b>Buffer:</b>	0.02 M Potassium Phosphate, 0.5 M Sodium Chloride, pH 7.2
<b>Preservative:</b>	0.01% (w/v) Sodium Azide
<b>Stabilizer:</b>	None

## Shipping & Handling

<b>Shipping Condition:</b>	Wet Ice
<b>Storage Condition:</b>	Store vial at 4° C prior to opening. This product is stable 4° C as an undiluted liquid. Dilute only prior to immediate use. For extended storage mix with an equal volume of glycerol, aliquot contents and freeze at -20° C or below. Avoid cycles of freezing and thawing.
<b>Expiration:</b>	Expiration date is one (1) year from date of receipt.

## Images

**SDS-PAGE**

SDS-PAGE of Mouse IgG2a Kappa Isotype Control. Lane 1: Mouse IgG2a Kappa Isotype Control, Non-reduced. M: Opal Pre-stained Ladder (p/n MB-210-0500). Lane 2: Mouse IgG2a Kappa Isotype Control, Reduced. Load: 1.0 µg per lane. Predicted/Observed: 140 kDa Non-reduced, 55 and 25 Reduced.

**References**

- Hayden H et al. ELISA detection of MPO-DNA complexes in human plasma is error-prone and yields limited information on neutrophil extracellular traps formed in vivo. *PLoS One*. (2021)

**Disclaimer**

This product is for research use only and is not intended for therapeutic or diagnostic applications. Please contact a technical service representative for more information. All products of animal origin manufactured by Rockland Immunochemicals are derived from starting materials of North American origin. Collection was performed in United States Department of Agriculture (USDA) inspected facilities and all materials have been inspected and certified to be free of disease and suitable for exportation. All properties listed are typical characteristics and are not specifications. All suggestions and data are offered in good faith but without guarantee as conditions and methods of use of our products are beyond our control. All claims must be made within 30 days following the date of delivery. The prospective user must determine the suitability of our materials before adopting them on a commercial scale. Suggested uses of our products are not recommendations to use our products in violation of any patent or as a license under any patent of Rockland Immunochemicals, Inc. If you require a commercial license to use this material and do not have one, then return this material, unopened to: Rockland Inc., P.O. BOX 5199, Limerick, Pennsylvania, USA.