



SZABO SCANDIC

Part of Europa Biosite

Produktinformation



Forschungsprodukte & Biochemikalien



Zellkultur & Verbrauchsmaterial



Diagnostik & molekulare Diagnostik



Laborgeräte & Service

Weitere Information auf den folgenden Seiten!
See the following pages for more information!



Lieferung & Zahlungsart

siehe unsere [Liefer- und Versandbedingungen](#)

Zuschläge

- Mindermengenzuschlag
- Trockeneiszuschlag
- Gefahrgutzuschlag
- Expressversand

SZABO-SCANDIC HandelsgmbH

Quellenstraße 110, A-1100 Wien

T. +43(0)1 489 3961-0

F. +43(0)1 489 3961-7

mail@szabo-scandic.com

www.szabo-scandic.com

[linkedin.com/company/szaboscandic](https://www.linkedin.com/company/szaboscandic) 

Datasheet for 010-001-335

Mouse IgG2b Lambda Isotype control

Overview

Description:	Mouse IgG2b Lambda (λ) Isotype Control - 010-001-335
Item No.:	010-001-335
Size:	1 mg
Applications:	SDS-PAGE
Origin:	Mouse

Product Details

Background:	Mouse isotype controls are used in flow cytometry, western blot and ELISA and differentiate between immunoglobulin classes and subclasses. Isotype controls allow for the genetic variations or differences in the constant regions of the heavy and light chains. In mouse there are six relevant heavy chain isotypes and two light chain isotypes: heavy chain alpha - IgA, gamma - IgG 1, 2a, 2b, 3 and μ - IgM, light chain kappa and lambda.
Synonyms:	Mouse subclass antibodies, IgG2 subclass, Mouse IgG2 isotype, mouse IgG2b, IgG2b lambda, IgG2b kappa
Species of Origin:	Mouse
Clone ID:	M2BL
Format:	IgG2b
Type:	Native Protein

Target Details

Purity/Specificity:	Mouse Isotype control has been prepared from concentrated cell culture supernatant by immunoaffinity chromatography using protein A. Assay by immunoelectrophoresis resulted in a single precipitin arc against anti-Mouse IgG2b and anti-Mouse serum. Isotyping assay resulted non-reactive with antisera to mouse IgG1, IgG2a, IgG3, IgA, IgM. Light chain composition has been confirmed by SDS-PAGE.
----------------------------	--

Application Details

Tested Applications:	SDS-PAGE
Application Note:	Mouse IgG2b lambda control has been tested in SDS-Page and can be utilized as a control or standard reagent in Western Blotting, Flow Cytometry, and ELISA experiments where determination of sample isotype is important. Specific conditions should be optimized by user.
Assay Dilutions:	All assays should be optimized by the user. Recommended dilutions (if any) may be listed below.
ELISA:	User Optimized
FC:	1:1000-1:5000
FLISA:	User Optimized
IF:	User Optimized
WB:	User Optimized

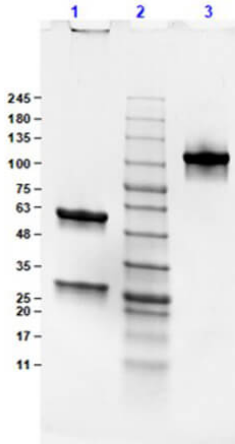
Formulation

Physical State:	Liquid (sterile filtered)
Concentration:	1.01 mg/mL by UV absorbance at 280 nm
Buffer:	0.02 M Potassium Phosphate, 0.5 M Sodium Chloride, pH 7.2
Preservative:	0.01% (w/v) Sodium Azide
Stabilizer:	None

Shipping & Handling

Shipping Condition:	Wet Ice
Storage Condition:	Store vial at 4° C prior to opening. This product is stable 4° C as an undiluted liquid. Dilute only prior to immediate use. For extended storage mix with an equal volume of glycerol, aliquot contents and freeze at -20° C or below. Avoid cycles of freezing and thawing.
Expiration:	Expiration date is one (1) year from date of receipt.

Images

**SDS-PAGE**

SDS-PAGE Results of Mouse IgG2b Lambda Isotype Control. Lane 1: Mouse IgG2b Lambda Isotype Control (Reduced) [5.0µg]. Lane 2: Opal Prestained Molecular Weight Markers (p/n MB-210-0500). Lane 3: Mouse IgG2b Lambda Isotype Control (Non-Reduced) [5.0µg]. 4-20% Gel, Coomassie Stained.

Disclaimer

This product is for research use only and is not intended for therapeutic or diagnostic applications. Please contact a technical service representative for more information. All products of animal origin manufactured by Rockland Immunochemicals are derived from starting materials of North American origin. Collection was performed in United States Department of Agriculture (USDA) inspected facilities and all materials have been inspected and certified to be free of disease and suitable for exportation. All properties listed are typical characteristics and are not specifications. All suggestions and data are offered in good faith but without guarantee as conditions and methods of use of our products are beyond our control. All claims must be made within 30 days following the date of delivery. The prospective user must determine the suitability of our materials before adopting them on a commercial scale. Suggested uses of our products are not recommendations to use our products in violation of any patent or as a license under any patent of Rockland Immunochemicals, Inc. If you require a commercial license to use this material and do not have one, then return this material, unopened to: Rockland Inc., P.O. BOX 5199, Limerick, Pennsylvania, USA.