



SZABO SCANDIC

Part of Europa Biosite

Produktinformation



Forschungsprodukte & Biochemikalien



Zellkultur & Verbrauchsmaterial



Diagnostik & molekulare Diagnostik



Laborgeräte & Service

Weitere Information auf den folgenden Seiten!
See the following pages for more information!



Lieferung & Zahlungsart

siehe unsere [Liefer- und Versandbedingungen](#)

Zuschläge

- Mindermengenzuschlag
- Trockeneiszuschlag
- Gefahrgutzuschlag
- Expressversand

SZABO-SCANDIC HandelsgmbH

Quellenstraße 110, A-1100 Wien

T. +43(0)1 489 3961-0

F. +43(0)1 489 3961-7

mail@szabo-scandic.com

www.szabo-scandic.com

[linkedin.com/company/szaboscandic](https://www.linkedin.com/company/szaboscandic) 

Datasheet for 010-001-C26-1000

rMouse EGF Protein

Overview

| | |
|----------------------|--|
| Description: | Mouse Epidermal Growth Factor Recombinant Protein - 010-001-C26-1000 |
| Item No.: | 010-001-C26-1000 |
| Size: | 1 mg |
| Applications: | SDS-PAGE, Cellular Assay |
| Origin: | Mouse |
| Expressed in: | E. coli |

Product Details

| | |
|---------------------------|--|
| Background: | Epidermal Growth Factor (EGF) is a growth factor that stimulates the proliferation of epithelial and epidermal cells. EGF family members are characterized by three intramolecular disulfide bonds and can bind to four different receptor tyrosine kinases known as EGFR/ErbB1, ErbB2, ErbB3, and ErbB4. Recombinant mouse EGF is a non-glycosylated protein, containing 54 amino acids, including 3 intra-molecular disulfide-bonds, with a molecular weight of 6.2 kDa. |
| Synonyms: | Urogastrone, URG |
| Species of Origin: | Mouse |
| Expressed in: | E. coli |
| Type: | Recombinant Protein |
| Low Endotoxin: | Yes |

Target Details

| | |
|----------------------------|---|
| Gene Name: | Egf |
| Purity/Specificity: | Epidermal Growth Factor purity was determined to be greater than 97% as determined by analysis by HpLC, UV-Spectroscopy at 280nm and by reducing and non-reducing SDS-pAGE. |
| Relevant Links: | <ul style="list-style-type: none">• UniProtKB - P01132 |

Application Details

| | |
|--------------------------------|--|
| Tested Applications: | SDS-PAGE |
| Suggested Applications: | Cellular Assay (Based on references) |
| Application Note: | Epidermal Growth Factor Recombinant Protein has been tested by SDS-PAGE and biological activity and is suitable as a control for polyclonal or monoclonal anti-Epidermal Growth Factor in immunological assays. |
| Assay Dilutions: | All assays should be optimized by the user. Recommended dilutions (if any) may be listed below. |
| Other: | Endotoxin Level: Measured by kinetic LAL analysis and is typically ≤ 1 EU/ μ g protein. Biologic Activity: The activity is determined by the dose-dependent proliferation of mouse BALB/c 3T3 cells and is typically less than 0.1 ng/mL. |

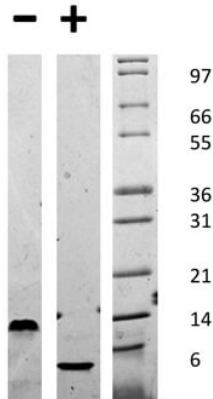
Formulation

| | |
|-------------------------------|--|
| Physical State: | Lyophilized |
| Concentration: | 0.1mg/ml |
| Buffer: | 0.01 M Sodium Phosphate, pH 7.5 |
| Preservative: | None |
| Stabilizer: | None |
| Reconstitution Volume: | 1.0 mL |
| Reconstitution Buffer: | Restore with deionized water (or equivalent) |

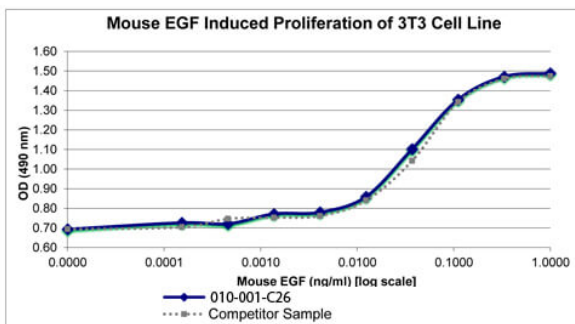
Shipping & Handling

| | |
|----------------------------|---|
| Shipping Condition: | Ambient |
| Storage Condition: | Store vial at 4° C prior to restoration. Dilute only prior to immediate use. Maintain sterility. This product DOES NOT contain preservative. DO NOT VORTEX. We recommend adding a carrier protein such as HSA or BSA to 0.1% (i.e. 1.0 mg/mL). For best results aliquot contents and freeze at -20° C or colder. Avoid cycles of freezing and thawing. Centrifuge vial before each opening to dislodge contents from the cap and to clarify if contents are not clear after standing at room temperature. |
| Expiration: | Expiration date is six (6) months from date of receipt. |

Images


SDS-PAGE

SDS-PAGE of Mouse Epidermal Growth Factor Recombinant Protein. Lane 1: 1 μ g Mouse EGF in non-reducing conditions (-). Lane 2: 1 μ g Mouse EGF in reducing conditions (+). Lane 3: Molecular weight marker. Mouse EGF is predicted to be a homodimer with a MW of 12.4 kDa.


SDS-PAGE

Bioactivity of Mouse Epidermal Growth Factor Recombinant Protein. 3T3 cells were cultured with 0 to 1 ng/mL Mouse EGF. Cell proliferation was measured after 44 hours and the linear portion of the curve was used to calculate the ED50. The ED50 of Mouse EGF is 30-40 pg/mL. This value is comparable to the typical expected range less than 100 pg/mL.

Disclaimer

This product is for research use only and is not intended for therapeutic or diagnostic applications. Please contact a technical service representative for more information. All products of animal origin manufactured by Rockland Immunochemicals are derived from starting materials of North American origin. Collection was performed in United States Department of Agriculture (USDA) inspected facilities and all materials have been inspected and certified to be free of disease and suitable for exportation. All properties listed are typical characteristics and are not specifications. All suggestions and data are offered in good faith but without guarantee as conditions and methods of use of our products are beyond our control. All claims must be made within 30 days following the date of delivery. The prospective user must determine the suitability of our materials before adopting them on a commercial scale. Suggested uses of our products are not recommendations to use our products in violation of any patent or as a license under any patent of Rockland Immunochemicals, Inc. If you require a commercial license to use this material and do not have one, then return this material, unopened to: Rockland Inc., P.O. BOX 5199, Limerick, Pennsylvania, USA.