



# SZABO SCANDIC

Part of Europa Biosite

## Produktinformation



Forschungsprodukte & Biochemikalien



Zellkultur & Verbrauchsmaterial



Diagnostik & molekulare Diagnostik



Laborgeräte & Service

Weitere Information auf den folgenden Seiten!  
See the following pages for more information!



### Lieferung & Zahlungsart

siehe unsere [Liefer- und Versandbedingungen](#)

### Zuschläge

- Mindermengenzuschlag
- Trockeneiszuschlag
- Gefahrgutzuschlag
- Expressversand

### SZABO-SCANDIC HandelsgmbH

Quellenstraße 110, A-1100 Wien

T. +43(0)1 489 3961-0

F. +43(0)1 489 3961-7

[mail@szabo-scandic.com](mailto:mail@szabo-scandic.com)

[www.szabo-scandic.com](http://www.szabo-scandic.com)

[linkedin.com/company/szaboscandic](https://www.linkedin.com/company/szaboscandic) 

Datasheet for 010-001-V69-0100

## rMouse IP-10 (CXCL10) Protein

### Overview

<b>Description:</b>	Mouse IP-10 (CXCL10) Recombinant Protein - 010-001-V69-0100
<b>Item No.:</b>	010-001-V69-0100
<b>Size:</b>	100 µg
<b>Applications:</b>	SDS-PAGE, Cellular Assay
<b>Origin:</b>	Mouse
<b>Expressed in:</b>	E. coli

### Product Details

<b>Background:</b>	The chemokine IP-10 (or CXCL10) is a chemokine made by monocytes, endothelial cells and fibroblasts in response to treatment with IFN $\gamma$ . IP-10 functions as a chemoattractant to cells expressing the G protein-coupled receptor, CXCR3, which is found mainly on activated T cells and NK cells. IP-10 plays an important role in Th1 type inflammatory diseases and autoimmune diseases such as, Hashimoto's thyroiditis, Graves' disease and Type 1 diabetes mellitus. Recombinant mouse IP-10 is a non-glycosylated protein, containing 77 amino acids, with a molecular weight of 8.7 kDa.
<b>Synonyms:</b>	10 kDa interferon gamma-induced protein (IP-10), C7, Interferon-gamma induced protein CRG-2, small-inducible cytokine B10
<b>Species of Origin:</b>	Mouse
<b>Expressed in:</b>	E. coli
<b>Type:</b>	Recombinant Protein
<b>Low Endotoxin:</b>	Yes

### Target Details

<b>Gene Name:</b>	Cxcl10
<b>Purity/Specificity:</b>	Ip-10 (CXCL10) purity was determined to be greater than 97% as determined by HpLC and by reducing and non-reducing SDS-pAGE.
<b>Relevant Links:</b>	<ul style="list-style-type: none"><li>• <a href="#">UniProtKB - P17515</a></li></ul>

## Application Details

<b>Tested Applications:</b>	SDS-PAGE
<b>Suggested Applications:</b>	Cellular Assay (Based on references)
<b>Application Note:</b>	IP-10 Recombinant Protein has been tested by SDS-PAGE and biological activity and is suitable as a control for polyclonal or monoclonal anti-IP-10 in immunological assays.
<b>Assay Dilutions:</b>	All assays should be optimized by the user. Recommended dilutions (if any) may be listed below.
<b>Other:</b>	Endotoxin Level: Measured by kinetic LAL analysis and is typically $\leq 1$ EU/ $\mu$ g protein. Biologic Activity: The activity is determined by its ability to chemoattract primary human T cells at 0.1-10 ng/mL.

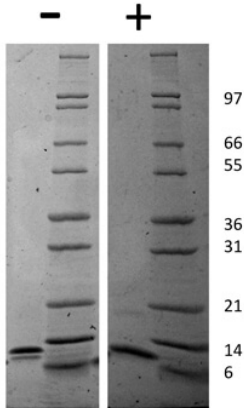
## Formulation

<b>Physical State:</b>	Lyophilized
<b>Concentration:</b>	0.1 mg/ml
<b>Buffer:</b>	0.1% Trifluoroacetic acid
<b>Preservative:</b>	None
<b>Stabilizer:</b>	None
<b>Reconstitution Volume:</b>	100 $\mu$ L
<b>Reconstitution Buffer:</b>	Restore with deionized water (or equivalent)

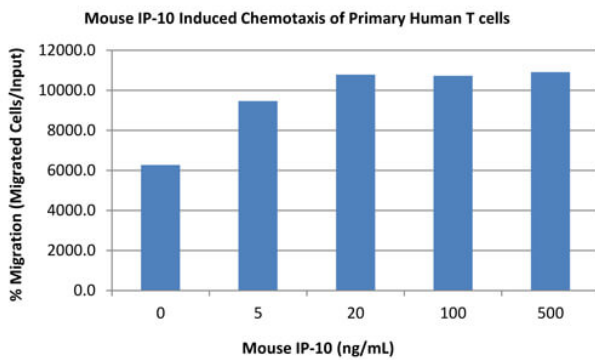
## Shipping & Handling

<b>Shipping Condition:</b>	Ambient
<b>Storage Condition:</b>	Store vial at -20° C prior to restoration. Dilute only prior to immediate use. Maintain sterility. This product DOES NOT contain preservative. DO NOT VORTEX. We recommend adding a carrier protein such as HSA or BSA to 0.1% (i.e. 1.0 mg/mL). For best results aliquot contents and freeze at -20° C or colder. Avoid cycles of freezing and thawing. Centrifuge vial before each opening to dislodge contents from the cap and to clarify if contents are not clear after standing at room temperature.
<b>Expiration:</b>	Expiration date is six (6) months from date of receipt.

## Images


**SDS-PAGE**

SDS-PAGE of Mouse IP-10 (CXCL10) Recombinant Protein. Lane 1: 1 µg Mouse IP-10 in non-reducing conditions (-). Lane 2: 1 µg Mouse IP-10 in reducing conditions (+). Lane 3: Molecular weight marker. Mouse IP-10 has a predicted MW of 8.7 kDa.


**SDS-PAGE**

Bioactivity of Mouse IP-10 (CXCL10) Recombinant Protein. Human T cells were allowed to migrate to Mouse IP-10 at (0, 5, 20, 100 and 500 ng/mL). After 4 hours, cells that migrated were counted using a luminescent substrate and displayed on the bar graph above. Significant increases in migration over basal levels were seen in response to Mouse IP-10 detectable starting at 5 ng/mL.

## Disclaimer

This product is for research use only and is not intended for therapeutic or diagnostic applications. Please contact a technical service representative for more information. All products of animal origin manufactured by Rockland Immunochemicals are derived from starting materials of North American origin. Collection was performed in United States Department of Agriculture (USDA) inspected facilities and all materials have been inspected and certified to be free of disease and suitable for exportation. All properties listed are typical characteristics and are not specifications. All suggestions and data are offered in good faith but without guarantee as conditions and methods of use of our products are beyond our control. All claims must be made within 30 days following the date of delivery. The prospective user must determine the suitability of our materials before adopting them on a commercial scale. Suggested uses of our products are not recommendations to use our products in violation of any patent or as a license under any patent of Rockland Immunochemicals, Inc. If you require a commercial license to use this material and do not have one, then return this material, unopened to: Rockland Inc., P.O. BOX 5199, Limerick, Pennsylvania, USA.