



SZABO SCANDIC

Part of Europa Biosite

Produktinformation



Forschungsprodukte & Biochemikalien



Zellkultur & Verbrauchsmaterial



Diagnostik & molekulare Diagnostik



Laborgeräte & Service

Weitere Information auf den folgenden Seiten!
See the following pages for more information!



Lieferung & Zahlungsart

siehe unsere [Liefer- und Versandbedingungen](#)

Zuschläge

- Mindermengenzuschlag
- Trockeneiszuschlag
- Gefahrgutzuschlag
- Expressversand

SZABO-SCANDIC HandelsgmbH

Quellenstraße 110, A-1100 Wien

T. +43(0)1 489 3961-0

F. +43(0)1 489 3961-7

mail@szabo-scandic.com

www.szabo-scandic.com

[linkedin.com/company/szaboscandic](https://www.linkedin.com/company/szaboscandic) 

Datasheet for 010-001-W17-0005**rMouse RELM alpha Protein****Overview**

Description:	Mouse RELM alpha Recombinant Protein - 010-001-W17-0005
Item No.:	010-001-W17-0005
Size:	5 µg
Applications:	SDS-PAGE
Origin:	Mouse
Expressed in:	E. coli

Product Details

Background:	Resistin-Like Molecule-alpha, or RELM- α , is a cytokine member to a unique family of proteins including Relm- β and Resistin. Relm- α and Resistin are secreted by adipocytes, where as Relm- β is secreted by intestinal epithelial cells. All members of the family share a high conserved C-terminal region with 10 Cysteine residues. Recombinant mouse RELM- α is a non-glycosylated protein, containing 88 amino acids, with a molecular weight of 10 kDa.
Synonyms:	Cysteine-rich secreted protein A12-gamma, Cysteine-rich secreted protein FIZZ1, FIZZ1, Hypoxia-induced mitogenic factor, Parasite-induced macrophage novel gene 1 protein, RELMalpha
Species of Origin:	Mouse
Expressed in:	E. coli
Type:	Recombinant Protein
Low Endotoxin:	Yes

Target Details

Gene Name:	Retnla
Purity/Specificity:	RELM alpha purity was determined to be greater than 98% as determined by HPLC, analysis by UV-Spectroscopy at 280nm, and by reducing and non-reducing SDS-pAGE.
Relevant Links:	<ul style="list-style-type: none">• UniProtKB - Q9EP95

Application Details

Tested Applications:	SDS-PAGE
Application Note:	RELM alpha Recombinant Protein has been tested by SDS-PAGE and is suitable as a control for polyclonal or monoclonal anti-RELM alpha in immunological assays.
Assay Dilutions:	All assays should be optimized by the user. Recommended dilutions (if any) may be listed below.
Other:	Endotoxin Level: Measured by kinetic LAL analysis and is typically ≤ 1 EU/ μ g protein. Biologic Activity: A standard activity has not been determined.

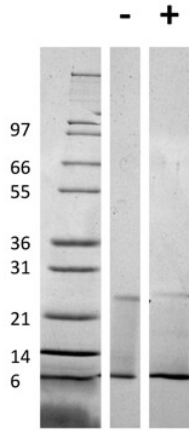
Formulation

Physical State:	Lyophilized
Buffer:	0.01 M Sodium Phosphate, pH 7.5
Preservative:	None
Stabilizer:	None
Reconstitution Volume:	5 μ l (5-50 μ l)
Reconstitution Buffer:	Restore with deionized water (or equivalent)

Shipping & Handling

Shipping Condition:	Ambient
Storage Condition:	Store vial at 4° C prior to restoration. Dilute only prior to immediate use. Maintain sterility. This product DOES NOT contain preservative. DO NOT VORTEX. We recommend adding a carrier protein such as HSA or BSA to 0.1% (i.e. 1.0 mg/mL). For best results aliquot contents and freeze at -20° C or colder. Avoid cycles of freezing and thawing. Centrifuge vial before each opening to dislodge contents from the cap and to clarify if contents are not clear after standing at room temperature.
Expiration:	Expiration date is six (6) months from date of receipt.

Images

**SDS-PAGE**

SDS-PAGE of Mouse RELM alpha Recombinant Protein. Lane 1: Molecular weight marker. Lane 2: 1 µg Mouse Relm alpha in non-reducing conditions (-). Lane 3: 1 µg Mouse Relm alpha in reducing conditions (+). Mouse Relm alpha has a predicted MW of 10 kDa.

Disclaimer

This product is for research use only and is not intended for therapeutic or diagnostic applications. Please contact a technical service representative for more information. All products of animal origin manufactured by Rockland Immunochemicals are derived from starting materials of North American origin. Collection was performed in United States Department of Agriculture (USDA) inspected facilities and all materials have been inspected and certified to be free of disease and suitable for exportation. All properties listed are typical characteristics and are not specifications. All suggestions and data are offered in good faith but without guarantee as conditions and methods of use of our products are beyond our control. All claims must be made within 30 days following the date of delivery. The prospective user must determine the suitability of our materials before adopting them on a commercial scale. Suggested uses of our products are not recommendations to use our products in violation of any patent or as a license under any patent of Rockland Immunochemicals, Inc. If you require a commercial license to use this material and do not have one, then return this material, unopened to: Rockland Inc., P.O. BOX 5199, Limerick, Pennsylvania, USA.