



SZABO SCANDIC

Part of Europa Biosite

Produktinformation



Forschungsprodukte & Biochemikalien



Zellkultur & Verbrauchsmaterial



Diagnostik & molekulare Diagnostik



Laborgeräte & Service

Weitere Information auf den folgenden Seiten!
See the following pages for more information!



Lieferung & Zahlungsart

siehe unsere [Liefer- und Versandbedingungen](#)

Zuschläge

- Mindermengenzuschlag
- Trockeneiszuschlag
- Gefahrgutzuschlag
- Expressversand

SZABO-SCANDIC HandelsgmbH

Quellenstraße 110, A-1100 Wien

T. +43(0)1 489 3961-0

F. +43(0)1 489 3961-7

mail@szabo-scandic.com

www.szabo-scandic.com

[linkedin.com/company/szaboscandic](https://www.linkedin.com/company/szaboscandic) 

Datasheet for 010-0204

Mouse IgG F(ab')₂ Fluorescein**Overview**

Description:	Mouse IgG F(ab') ₂ Fragment Fluorescein Conjugated - 010-0204
Item No.:	010-0204
Size:	1 mg
Origin:	Mouse

Product Details

Background:	Secreted as part of the adaptive immune response by plasma B cells, immunoglobulin G constitutes 75% of serum immunoglobulins. Immunoglobulin G binds to viruses, bacteria, as well as fungi and facilitates their destruction or neutralization via agglutination (and thereby immobilizing them), activation of the compliment cascade, and opsonization for phagocytosis. This product possesses the F(ab') ₂ fragment, recognized by the two F(ab) fragments yielded from the digestion of the antibody below the disulfide bond hinge region.
Synonyms:	fluorescein conjugated Mouse IgG F(ab') ₂ fragment, FITC conjugated Mouse IgG F(ab') ₂ fragment
Species of Origin:	Mouse
Conjugate:	Fluorescein (FITC)
Format:	IgG F(ab') ₂
Type:	Native Protein
F/P Ratio:	2.5

Target Details

Purity/Specificity:	This product was prepared from normal serum by delipidation, salt fractionation and ion change chromatography followed by pepsin digestion and extensive dialysis against the buffer stated above. Assay by immunoelectrophoresis resulted in a single precipitin arc against anti-Fluorescein, anti-Mouse IgG, anti-Mouse IgG F(ab') ₂ and anti-Mouse Serum. No reaction was observed against anti-Mouse IgG F(c) or anti-Pepsin.
----------------------------	---

Application Details

Application Note: Mouse IgG F(ab')₂ fragment Fluorescein is designed for immunofluorescence microscopy, fluorescence based plate assays (FLISA) and fluorescent western blotting. This product is also suitable for multiplex analysis, including multicolor imaging, utilizing various commercial platforms.

Assay Dilutions: All assays should be optimized by the user. Recommended dilutions (if any) may be listed below.

Formulation

Physical State: Lyophilized

Concentration: 1.0 mg/mL by UV absorbance at 280 nm

Buffer: 0.01 M Sodium Phosphate, 0.15 M Sodium Chloride, pH 7.2

Preservative: 0.01% (w/v) Thimerosal

Stabilizer: 10 mg/mL Bovine Serum Albumin (BSA) - Immunoglobulin and Protease free

Reconstitution Volume: 1.0 mL

Reconstitution Buffer: Restore with deionized water (or equivalent)

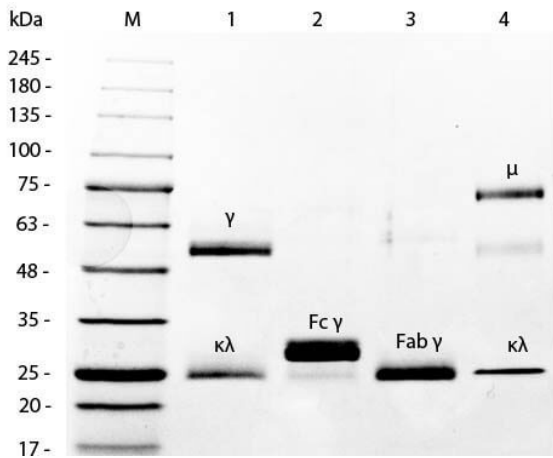
Shipping & Handling

Shipping Condition: Ambient

Storage Condition: Store vial at 4° C prior to restoration. For extended storage aliquot contents and freeze at -20° C or below. Avoid cycles of freezing and thawing. Centrifuge product if not completely clear after standing at room temperature. This product is stable for several weeks at 4° C as an undiluted liquid. Dilute only prior to immediate use.

Expiration: Expiration date is one (1) year from date of receipt.

Images



SDS-PAGE

SDS-PAGE of Mouse IgG Whole Molecule Rhodamine Conjugated (p/n 010-0002). MW: 5 μ L Opal Prestained Marker (p/n MB-210-0500). Lane 1: Reduced Mouse IgG Whole Molecule Rhodamine Conjugated (p/n 010-0002). Lane 2: Reduced Mouse F(c) Fragment (p/n 010-0103). Lane 3: Reduced Mouse F(ab) Fragment (p/n 010-0105). Lane 4: Mouse IgM Kappa Myeloma Protein (p/n 010-001-033). Load: 1 μ g per lane. Predicted/Observed size: IgG at 50 and 25 kDa; F(c) at 25 kDa; F(ab) at 25 kDa; IgM K at 70 and 23 kDa. Observed F(c) Fragment migrates slightly higher.

Disclaimer

This product is for research use only and is not intended for therapeutic or diagnostic applications. Please contact a technical service representative for more information. All products of animal origin manufactured by Rockland Immunochemicals are derived from starting materials of North American origin. Collection was performed in United States Department of Agriculture (USDA) inspected facilities and all materials have been inspected and certified to be free of disease and suitable for exportation. All properties listed are typical characteristics and are not specifications. All suggestions and data are offered in good faith but without guarantee as conditions and methods of use of our products are beyond our control. All claims must be made within 30 days following the date of delivery. The prospective user must determine the suitability of our materials before adopting them on a commercial scale. Suggested uses of our products are not recommendations to use our products in violation of any patent or as a license under any patent of Rockland Immunochemicals, Inc. If you require a commercial license to use this material and do not have one, then return this material, unopened to: Rockland Inc., P.O. BOX 5199, Limerick, Pennsylvania, USA.