



SZABO SCANDIC

Part of Europa Biosite

Produktinformation



Forschungsprodukte & Biochemikalien



Zellkultur & Verbrauchsmaterial



Diagnostik & molekulare Diagnostik



Laborgeräte & Service

Weitere Information auf den folgenden Seiten!
See the following pages for more information!



Lieferung & Zahlungsart

siehe unsere [Liefer- und Versandbedingungen](#)

Zuschläge

- Mindermengenzuschlag
- Trockeneiszuschlag
- Gefahrgutzuschlag
- Expressversand

SZABO-SCANDIC HandelsgmbH

Quellenstraße 110, A-1100 Wien

T. +43(0)1 489 3961-0

F. +43(0)1 489 3961-7

mail@szabo-scandic.com

www.szabo-scandic.com

[linkedin.com/company/szaboscandic](https://www.linkedin.com/company/szaboscandic) 

Datasheet for 010-0243

Mouse IgG3 isotype control Fluorescein**Overview**

Description:	Mouse IgG3 Isotype Control Fluorescein Conjugated - 010-0243
Item No.:	010-0243
Size:	100 µg
Applications:	Dot Blot
Origin:	Mouse

Product Details

Background:	Isotype controls are important for Flow Cytometry and have no specificity for target cells within a particular experiment. Their purpose is to confirm the specificity of primary antibody binding that it is not a result of non-specific Fc receptor binding to cells or other cellular protein interactions. Isotype controls need to be matched to the specific primary Abs (species and isotype, including heavy and light chains) being used.
Synonyms:	Fluorescein conjugated Mouse IgG3 isotype control, Mouse IgG3 subclass isotype control FITC conjugation
Species of Origin:	Mouse
Conjugate:	Fluorescein (FITC)
Clone ID:	MG3
Format:	IgG3
Type:	Native Protein
F/P Ratio:	3.3

Target Details

Purity/Specificity:	This product has been prepared from serum-free tissue culture supernate by protein A chromatography. Typically less than 1% cross reactivity against other mouse heavy or light chain specific antibodies was detected by ELISA.
----------------------------	--

Application Details

Tested Applications:	Dot Blot
Application Note:	Mouse IgG3 isotype has been tested in dot blot and is designed for immunofluorescence microscopy, flow cytometry, fluorescence based plate assays (FLISA), fluorescent western blotting, multiplex analysis, including multicolor imaging, utilizing various commercial platforms.
Assay Dilutions:	All assays should be optimized by the user. Recommended dilutions (if any) may be listed below.
ELISA:	User Optimized
FC:	1:1000-1:5000
FLISA:	User Optimized
IF:	User Optimized
WB:	User Optimized

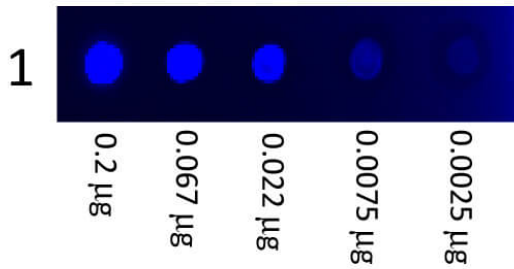
Formulation

Physical State:	Lyophilized
Concentration:	1.0 mg/mL by UV absorbance at 280 nm
Buffer:	0.02 M Potassium Phosphate, 0.15 M Sodium Chloride, pH 7.2
Preservative:	0.01% (w/v) Sodium Azide
Stabilizer:	10 mg/mL Bovine Serum Albumin (BSA) - Immunoglobulin and Protease free
Reconstitution Volume:	100 µL
Reconstitution Buffer:	Restore with deionized water (or equivalent)

Shipping & Handling

Shipping Condition:	Ambient
Storage Condition:	Store vial at 4° C prior to restoration. For extended storage aliquot contents and freeze at -20° C or below. Avoid cycles of freezing and thawing. Centrifuge product if not completely clear after standing at room temperature. This product is stable for several weeks at 4° C as an undiluted liquid. Dilute only prior to immediate use.
Expiration:	Expiration date is one (1) year from date of receipt.

Images

**Dot Blot**

Dot Blot showing the detection Fluorescein conjugated Mouse IgG3 subclass. A three-fold serial dilution of Fluorescein conjugated Mouse IgG3 subclass starting at 200ng was spotted onto 0.45 µm nitrocellulose and imaged using the Bio-Rad VersaDoc® 4000 MP.

Disclaimer

This product is for research use only and is not intended for therapeutic or diagnostic applications. Please contact a technical service representative for more information. All products of animal origin manufactured by Rockland Immunochemicals are derived from starting materials of North American origin. Collection was performed in United States Department of Agriculture (USDA) inspected facilities and all materials have been inspected and certified to be free of disease and suitable for exportation. All properties listed are typical characteristics and are not specifications. All suggestions and data are offered in good faith but without guarantee as conditions and methods of use of our products are beyond our control. All claims must be made within 30 days following the date of delivery. The prospective user must determine the suitability of our materials before adopting them on a commercial scale. Suggested uses of our products are not recommendations to use our products in violation of any patent or as a license under any patent of Rockland Immunochemicals, Inc. If you require a commercial license to use this material and do not have one, then return this material, unopened to: Rockland Inc., P.O. BOX 5199, Limerick, Pennsylvania, USA.