



SZABO SCANDIC

Part of Europa Biosite

Produktinformation



Forschungsprodukte & Biochemikalien



Zellkultur & Verbrauchsmaterial



Diagnostik & molekulare Diagnostik



Laborgeräte & Service

Weitere Information auf den folgenden Seiten!
See the following pages for more information!



Lieferung & Zahlungsart

siehe unsere [Liefer- und Versandbedingungen](#)

Zuschläge

- Mindermengenzuschlag
- Trockeneiszuschlag
- Gefahrgutzuschlag
- Expressversand

SZABO-SCANDIC HandelsgmbH

Quellenstraße 110, A-1100 Wien

T. +43(0)1 489 3961-0

F. +43(0)1 489 3961-7

mail@szabo-scandic.com

www.szabo-scandic.com

[linkedin.com/company/szaboscandic](https://www.linkedin.com/company/szaboscandic) 

Datasheet for 010-0302**Mouse IgG Peroxidase****Overview**

Description:	Mouse IgG Whole Molecule Peroxidase Conjugated - 010-0302
Item No.:	010-0302
Size:	1 mg
Applications:	Dot Blot
Origin:	Mouse

Product Details

Background:	Mouse IgG purified protein (Immunoglobulin G) are antibody molecules. Mouse IgG is composed of four peptide chains — two heavy chains and two light chains. Mouse IgG has two antigen binding sites. Other Immunoglobulins may be described in terms of polymers with the IgG structure considered the monomer. Mouse IgG typically constitutes 75% of serum immunoglobulins. Mouse IgG molecules are synthesized and secreted by plasma B cells. Ideal as a negative control for Flow Cytometry, Western blotting, immunoprecipitation and immunohistochemistry applications.
Synonyms:	peroxidase conjugated Mouse IgG, HRP conjugated Mouse IgG Whole molecule
Species of Origin:	Mouse
Conjugate:	Peroxidase (HRP)
Format:	IgG
Type:	Native Protein

Target Details

Purity/Specificity:	This product was prepared from normal serum by delipidation, salt fractionation, ion exchange chromatography followed by extensive dialysis against the buffer stated above. Assay by immunoelectrophoresis resulted in a single precipitin arc against anti-Peroxidase, anti- Mouse IgG and anti-Mouse Serum.
----------------------------	--

Application Details

Tested Applications:	Dot Blot
Application Note:	Mouse IgG Peroxidase has been tested in dot blot and is designed for immunofluorescence microscopy, fluorescence based plate assays (FLISA), fluorescent western blotting, multiplex analysis, including multicolor imaging, utilizing various commercial platforms.
Assay Dilutions:	All assays should be optimized by the user. Recommended dilutions (if any) may be listed below.

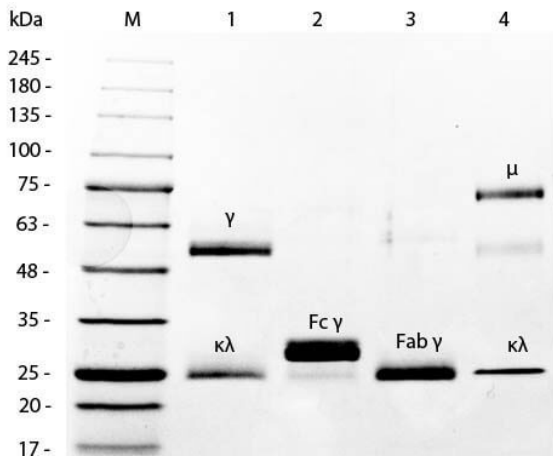
Formulation

Physical State:	Lyophilized
Concentration:	1.0 mg/mL by UV absorbance at 280 nm
Buffer:	0.01 M Sodium Phosphate, 0.15 M Sodium Chloride, pH 7.2
Preservative:	0.01% (w/v) Gentamicin Sulfate. Do NOT add Sodium Azide!
Stabilizer:	10 mg/mL Bovine Serum Albumin (BSA) - Immunoglobulin and Protease free
Reconstitution Volume:	1.0 mL
Reconstitution Buffer:	Restore with deionized water (or equivalent)

Shipping & Handling

Shipping Condition:	Ambient
Storage Condition:	Store vial at 4° C prior to restoration. For extended storage aliquot contents and freeze at -20° C or below. Avoid cycles of freezing and thawing. Centrifuge product if not completely clear after standing at room temperature. This product is stable for several weeks at 4° C as an undiluted liquid. Dilute only prior to immediate use.
Expiration:	Expiration date is one (1) year from date of receipt.

Images


SDS-PAGE

SDS-PAGE of Mouse IgG Whole Molecule Rhodamine Conjugated (p/n 010-0002). MW: 5 μ L Opal Prestained Marker (p/n MB-210-0500). Lane 1: Reduced Mouse IgG Whole Molecule Rhodamine Conjugated (p/n 010-0002). Lane 2: Reduced Mouse F(c) Fragment (p/n 010-0103). Lane 3: Reduced Mouse F(ab) Fragment (p/n 010-0105). Lane 4: Mouse IgM Kappa Myeloma Protein (p/n 010-001-033). Load: 1 μ g per lane. Predicted/Observed size: IgG at 50 and 25 kDa; F(c) at 25 kDa; F(ab) at 25 kDa; IgM K at 70 and 23 kDa. Observed F(c) Fragment migrates slightly higher.

Disclaimer

This product is for research use only and is not intended for therapeutic or diagnostic applications. Please contact a technical service representative for more information. All products of animal origin manufactured by Rockland Immunochemicals are derived from starting materials of North American origin. Collection was performed in United States Department of Agriculture (USDA) inspected facilities and all materials have been inspected and certified to be free of disease and suitable for exportation. All properties listed are typical characteristics and are not specifications. All suggestions and data are offered in good faith but without guarantee as conditions and methods of use of our products are beyond our control. All claims must be made within 30 days following the date of delivery. The prospective user must determine the suitability of our materials before adopting them on a commercial scale. Suggested uses of our products are not recommendations to use our products in violation of any patent or as a license under any patent of Rockland Immunochemicals, Inc. If you require a commercial license to use this material and do not have one, then return this material, unopened to: Rockland Inc., P.O. BOX 5199, Limerick, Pennsylvania, USA.