



SZABO SCANDIC

Part of Europa Biosite

Produktinformation



Forschungsprodukte & Biochemikalien



Zellkultur & Verbrauchsmaterial



Diagnostik & molekulare Diagnostik



Laborgeräte & Service

Weitere Information auf den folgenden Seiten!
See the following pages for more information!



Lieferung & Zahlungsart

siehe unsere [Liefer- und Versandbedingungen](#)

Zuschläge

- Mindermengenzuschlag
- Trockeneiszuschlag
- Gefahrgutzuschlag
- Expressversand

SZABO-SCANDIC HandelsgmbH

Quellenstraße 110, A-1100 Wien

T. +43(0)1 489 3961-0

F. +43(0)1 489 3961-7

mail@szabo-scandic.com

www.szabo-scandic.com

[linkedin.com/company/szaboscandic](https://www.linkedin.com/company/szaboscandic) 

Datasheet for 011-0051

Rabbit IgG F(ab')₂ Agarose

Overview

Description:	Rabbit IgG F(ab') ₂ Fragment Agarose Conjugated - 011-0051
Item No.:	011-0051
Size:	5 mg
Origin:	Rabbit

Product Details

Background:	Rabbit IgG F(ab') ₂ Fragment Agarose Conjugated is a proteolytic fragment of immunoglobulin G (IgG) obtained by limited digestion with the enzyme pepsin under controlled conditions of temperature, time and pH. Rabbit IgG F(ab') ₂ molecules lack the Fc portion of Rabbit IgG and therefore receptors that bind Rabbit IgG Fc will not bind Rabbit IgG F(ab') ₂ molecules. This product possesses the F(ab') ₂ fragment, recognized by the two F(ab) fragments yielded from the digestion of the antibody below the disulfide bond hinge region followed by agarose conjugation.
Synonyms:	Rabbit IgG F(ab') ₂ fragment Agarose Conjugate, Rabbit IgG Fab ₂ Agarose
Species of Origin:	Rabbit
Conjugate:	Agarose
Format:	IgG F(ab') ₂
Type:	Native Protein

Target Details

Purity/Specificity:	This product is an purified Rabbit IgG isolated from normal Rabbit Serum digested by the enzyme pepsin and purified by chromatography coupled to activated agarose. Sufficient antibody capacity is provided to bind a minimum of 5 mg of anti-Rabbit IgG.
----------------------------	--

Application Details

Application Note:	Rabbit IgG F(ab') ₂ Agarose is suitable for immunoprecipitation and Immunoaffinity purifications.
--------------------------	--

Assay Dilutions: All assays should be optimized by the user. Recommended dilutions (if any) may be listed below.

IP: User Optimized

Formulation

Physical State: Suspension of agarose beads

Buffer: 0.01 M Sodium Phosphate, 0.15 M Sodium Chloride, pH 7.2

Preservative: 0.5% (w/v) Sodium Azide

Stabilizer: None

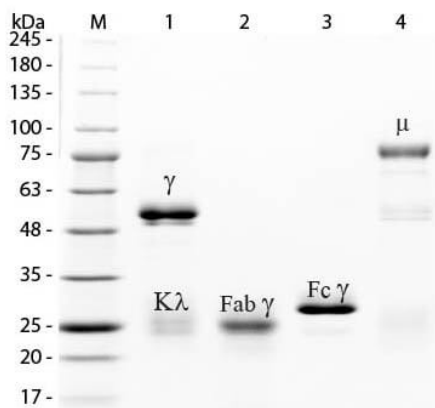
Shipping & Handling

Shipping Condition: Wet Ice

Storage Condition: Store vial at 4° C prior to opening. DO NOT FREEZE.

Expiration: Expiration date is one (1) year from date of receipt.

Images



SDS-PAGE

SDS-PAGE of Rabbit IgG Whole Molecule Rhodamine Conjugated (p/n 011-0002). Lane M: 3 μ L Opal Prestained Marker (p/n MB-210-0500). Lane 1: Reduced Rabbit IgG Whole Molecule Rhodamine Conjugated (p/n 011-0002). Lane 2: Reduced Rabbit IgG F(ab) Fragment (p/n 011-0105). Lane 3: Reduced Rabbit IgG F(c) Fragment (p/n 011-0103). Lane 4: Reduced Rabbit IgM Whole Molecule (p/n 011-0107). Load: 1 μ g for F(ab) and F(c); 1.2 μ g for IgG and IgM. Predicted/Observed size: IgG at 50 and 25 kDa; F(c) at 25 kDa; F(ab) at 25 kDa; IgM at 70 and 23 kDa. Observed F(c) Fragment migrates slightly higher.

Disclaimer

This product is for research use only and is not intended for therapeutic or diagnostic applications. Please contact a technical service representative for more information. All products of animal origin manufactured by Rockland Immunochemicals are derived from starting materials of North American origin. Collection was performed in United States Department of Agriculture (USDA) inspected facilities and all materials have been inspected and certified to be free of disease and suitable for exportation. All properties listed are typical characteristics and are not specifications. All suggestions and data are offered in good faith but without guarantee as conditions and methods of use of our products are beyond our control. All claims must be made within 30 days following the date of delivery. The prospective user must determine the suitability of our materials before adopting them on a commercial scale. Suggested uses of our products are not recommendations to use our products in violation of any patent or as a license under any patent of Rockland Immunochemicals, Inc. If you require a commercial license to use this material and do not have one, then return this material, unopened to: Rockland Inc., P.O. BOX 5199, Limerick, Pennsylvania, USA.