



# SZABO SCANDIC

Part of Europa Biosite

## Produktinformation



Forschungsprodukte & Biochemikalien



Zellkultur & Verbrauchsmaterial



Diagnostik & molekulare Diagnostik



Laborgeräte & Service

Weitere Information auf den folgenden Seiten!  
See the following pages for more information!



### Lieferung & Zahlungsart

siehe unsere [Liefer- und Versandbedingungen](#)

### Zuschläge

- Mindermengenzuschlag
- Trockeneiszuschlag
- Gefahrgutzuschlag
- Expressversand

### SZABO-SCANDIC HandelsgmbH

Quellenstraße 110, A-1100 Wien

T. +43(0)1 489 3961-0

F. +43(0)1 489 3961-7

[mail@szabo-scandic.com](mailto:mail@szabo-scandic.com)

[www.szabo-scandic.com](http://www.szabo-scandic.com)

[linkedin.com/company/szaboscandic](https://www.linkedin.com/company/szaboscandic) 

## Datasheet for 012-001-B31

**IL-17F Rat Recombinant Protein****Overview**

<b>Description:</b>	IL-17F Rat Recombinant Protein - 012-001-B31
<b>Item No.:</b>	012-001-B31
<b>Size:</b>	25 µg
<b>Applications:</b>	SDS-PAGE
<b>Origin:</b>	Rat
<b>Expressed in:</b>	E. coli

**Product Details**

<b>Background:</b>	Recombinant Rat IL-17F produced in E.coli is a homodimeric, non-glycosylated polypeptide chain containing a total of 133 amino acids and having a molecular mass of 14.9 kDa. Homodimeric interleukin-17F is a member of the IL-17 family of six homodimeric proteins (IL-17A-17F). Activity studies reveal IL-17A to be the most potent, followed by IL-17A/F and IL-17F 100 fold lower than IL-17A.
<b>Synonyms:</b>	Interleukin-17F cytokine, IL-17F, Interleukin-24, IL-24, Cytokine ML-1
<b>Species of Origin:</b>	Rat
<b>Expressed in:</b>	E. coli
<b>Type:</b>	Recombinant Protein
<b>Low Endotoxin:</b>	Yes

**Target Details**

<b>Gene Name:</b>	Il17f
<b>Purity/Specificity:</b>	Purity was determined to be greater than 98% as determined by analysis by RP-HPLC and by reducing and non-reducing SDS-PAGE.
<b>Relevant Links:</b>	<ul style="list-style-type: none"><li>• <a href="#">NCBI</a></li><li>• <a href="#">UniProtKB - Q5BJ95</a></li></ul>

## Application Details

<b>Tested Applications:</b>	SDS-PAGE
<b>Application Note:</b>	IL-17F protein has been tested by SDS-PAGE and is suitable as a control for polyclonal or monoclonal anti-IL-17F in immunological assays.
<b>Assay Dilutions:</b>	All assays should be optimized by the user. Recommended dilutions (if any) may be listed below.
<b>Other:</b>	Biological Activity: IL-17F activity is determined by the dose-dependent induction of IL-6 production in cultured mouse NIH 3T3 fibroblasts and is typically 10-20 ng/mL. Endotoxin Level: Measured by kinetic LAL analysis and is typically $\leq 1$ EU/ $\mu$ g protein.

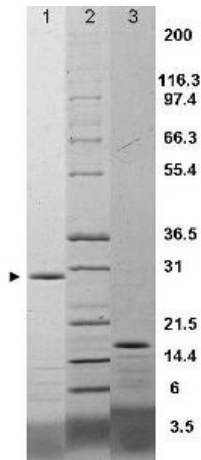
## Formulation

<b>Physical State:</b>	Lyophilized
<b>Buffer:</b>	0.1% Trifluoroacetic acid
<b>Preservative:</b>	None
<b>Stabilizer:</b>	None
<b>Reconstitution Volume:</b>	25 $\mu$ l (25-250 $\mu$ l)
<b>Reconstitution Buffer:</b>	Restore with deionized water (or equivalent)

## Shipping & Handling

<b>Shipping Condition:</b>	Ambient
<b>Storage Condition:</b>	Store vial at 4° C prior to restoration. Dilute only prior to immediate use. Maintain sterility. This product DOES NOT contain preservative. DO NOT VORTEX. We recommend adding a carrier protein such as HSA or BSA to 0.1% (i.e. 1.0 mg/mL) . For best results aliquot contents and freeze at -20° C or colder. Avoid cycles of freezing and thawing. Centrifuge vial before each opening to dislodge contents from the cap and to clarify if contents are not clear after standing at room temperature.
<b>Expiration:</b>	Expiration date is six (6) months from date of receipt.

## Images



#### SDS-PAGE

SDS-PAGE using Rockland's Recombinant Rat IL-17F Protein shows bands corresponding to IL-17F (1 $\mu$ g) in lane 1 (unreduced, arrowhead) and lane 3 (reduced). Molecular weight estimation was made by comparison to prestained MW markers, lane 2.

## Disclaimer

This product is for research use only and is not intended for therapeutic or diagnostic applications. Please contact a technical service representative for more information. All products of animal origin manufactured by Rockland Immunochemicals are derived from starting materials of North American origin. Collection was performed in United States Department of Agriculture (USDA) inspected facilities and all materials have been inspected and certified to be free of disease and suitable for exportation. All properties listed are typical characteristics and are not specifications. All suggestions and data are offered in good faith but without guarantee as conditions and methods of use of our products are beyond our control. All claims must be made within 30 days following the date of delivery. The prospective user must determine the suitability of our materials before adopting them on a commercial scale. Suggested uses of our products are not recommendations to use our products in violation of any patent or as a license under any patent of Rockland Immunochemicals, Inc. If you require a commercial license to use this material and do not have one, then return this material, unopened to: Rockland Inc., P.O. BOX 5199, Limerick, Pennsylvania, USA.