



SZABO SCANDIC

Part of Europa Biosite

Produktinformation



Forschungsprodukte & Biochemikalien



Zellkultur & Verbrauchsmaterial



Diagnostik & molekulare Diagnostik



Laborgeräte & Service

Weitere Information auf den folgenden Seiten!
See the following pages for more information!



Lieferung & Zahlungsart

siehe unsere [Liefer- und Versandbedingungen](#)

Zuschläge

- Mindermengenzuschlag
- Trockeneiszuschlag
- Gefahrgutzuschlag
- Expressversand

SZABO-SCANDIC HandelsgmbH

Quellenstraße 110, A-1100 Wien

T. +43(0)1 489 3961-0

F. +43(0)1 489 3961-7

mail@szabo-scandic.com

www.szabo-scandic.com

[linkedin.com/company/szaboscandic](https://www.linkedin.com/company/szaboscandic) 

Datasheet for 012-001-B32**IL-17A Rat Recombinant Protein****Overview**

Description:	IL-17A Rat Recombinant Protein - 012-001-B32
Item No.:	012-001-B32
Size:	25 µg
Applications:	SDS-PAGE
Origin:	Rat
Expressed in:	E. coli

Product Details

Background: Rat IL-17A (IL-17), also known as CTLA-8, is a proinflammatory cytokine member of a six-species family of proteins (IL-17A-17F). Rat IL-17A protein is a homodimer consisting of two 134 amino acids peptides. IL-17A is secreted mainly by activated CD4+ and CD8+ T lymphocytes and acts through its receptor, IL-17R, to induce the expression of many mediators of inflammation, most strikingly, those that are involved in the proliferation, maturation and chemotaxis of neutrophils. Elevated levels of IL-17A have been associated with several conditions, including rheumatoid arthritis, airway inflammation, allograft rejection, inflammatory bowel disease, psoriasis, cancer and multiple sclerosis. There is 58% identity between the amino acid sequence of human and rat IL-17A. Recombinant rat IL-17A produced in E.coli is a non-glycosylated disulfide-joined homodimer having a molecular mass of 30.0 kDa.

Synonyms:	Interleukin-17A cytokine, IL-17A, IL-17, Cytotoxic T-lymphocyte-associated antigen 8, CTLA-8
Species of Origin:	Rat
Expressed in:	E. coli
Type:	Recombinant Protein
Low Endotoxin:	Yes

Target Details

Gene Name:	Il17a
Purity/Specificity:	Purity was determined to be greater than 97% by reducing and non-reducing SDS- PAGE.
Relevant Links:	<ul style="list-style-type: none">• UniProtKB - Q61453

- [NCBI](#)

Application Details

Tested Applications:	SDS-PAGE
Application Note:	IL-17A protein has been tested by SDS-PAGE and is suitable as a control for polyclonal or monoclonal anti-IL-17A in immunological assays.
Assay Dilutions:	All assays should be optimized by the user. Recommended dilutions (if any) may be listed below.
Other:	Biological Activity: Rat IL-17A is fully biologically active when compared to standards via dose-dependent induction of IL-6 production in cultured mouse NIH 3T3 fibroblasts. The ED50 for recombinant rat IL-17A in this assay was 0.44-0.66ng/ml. Endotoxin Level: Measured by LAL is 0.03 EUs/μg protein

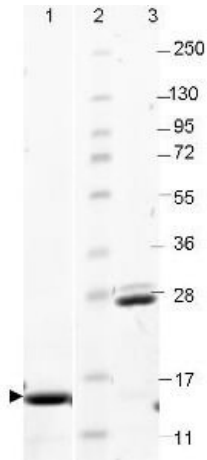
Formulation

Physical State:	Lyophilized
Concentration:	0.1 mg/ml by UV absorbance at 280 nm
Buffer:	0.01 M Sodium Citrate, pH 3.0
Preservative:	None
Stabilizer:	None
Reconstitution Volume:	250 μL
Reconstitution Buffer:	Restore with deionized water (or equivalent)

Shipping & Handling

Shipping Condition:	Ambient
Storage Condition:	Store vial at 4° C prior to restoration. Dilute only prior to immediate use. Maintain sterility. This product DOES NOT contain preservative. DO NOT VORTEX. We recommend adding a carrier protein such as HSA or BSA to 0.1% (i.e. 1.0 mg/mL) . For best results aliquot contents and freeze at -20° C or colder. Avoid cycles of freezing and thawing. Centrifuge vial before each opening to dislodge contents from the cap and to clarify if contents are not clear after standing at room temperature.
Expiration:	Expiration date is six (6) months from date of receipt.

Images



SDS-PAGE

SDS-PAGE using Rockland's Recombinant Rat IL-17A Protein shows bands corresponding to IL-17A (2 μ g) in lane 1 (reduced, arrowhead) and lane 3 (unreduced). Molecular weight estimation was made by comparison to prestained MW markers, lane 2.

Disclaimer

This product is for research use only and is not intended for therapeutic or diagnostic applications. Please contact a technical service representative for more information. All products of animal origin manufactured by Rockland Immunochemicals are derived from starting materials of North American origin. Collection was performed in United States Department of Agriculture (USDA) inspected facilities and all materials have been inspected and certified to be free of disease and suitable for exportation. All properties listed are typical characteristics and are not specifications. All suggestions and data are offered in good faith but without guarantee as conditions and methods of use of our products are beyond our control. All claims must be made within 30 days following the date of delivery. The prospective user must determine the suitability of our materials before adopting them on a commercial scale. Suggested uses of our products are not recommendations to use our products in violation of any patent or as a license under any patent of Rockland Immunochemicals, Inc. If you require a commercial license to use this material and do not have one, then return this material, unopened to: Rockland Inc., P.O. BOX 5199, Limerick, Pennsylvania, USA.