



SZABO SCANDIC

Part of Europa Biosite

Produktinformation



Forschungsprodukte & Biochemikalien



Zellkultur & Verbrauchsmaterial



Diagnostik & molekulare Diagnostik



Laborgeräte & Service

Weitere Information auf den folgenden Seiten!
See the following pages for more information!



Lieferung & Zahlungsart

siehe unsere [Liefer- und Versandbedingungen](#)

Zuschläge

- Mindermengenzuschlag
- Trockeneiszuschlag
- Gefahrgutzuschlag
- Expressversand

SZABO-SCANDIC HandelsgmbH

Quellenstraße 110, A-1100 Wien

T. +43(0)1 489 3961-0

F. +43(0)1 489 3961-7

mail@szabo-scandic.com

www.szabo-scandic.com

[linkedin.com/company/szaboscandic](https://www.linkedin.com/company/szaboscandic) 

Datasheet for 012-001-V12-0005**rRat GM-CSF Protein****Overview**

Description:	Rat Granulocyte Macrophage-Colony Stimulating Factor Recombinant Protein - 012-001-V12-0005
Item No.:	012-001-V12-0005
Size:	5 µg
Applications:	SDS-PAGE, Cellular Assay
Origin:	Rat

Product Details

Background:	Granulocyte Macrophage Colony Stimulating Factor (GM-CSF) is hematopoietic factor produced by endothelial cells, monocytes, fibroblasts and T cells in response to a number of inflammatory mediators. GM-CSF is able to stimulate the production of neutrophilic granulocytes, macrophages, and mixed granulocyte-macrophage colonies from bone marrow cells. GM-CSF can also stimulate some functional activities in mature granulocytes and macrophages. Human and mouse GM-CSF show no cross-reactivity. Recombinant rat GM-CSF is a non-glycosylated protein, containing 128 amino acids, with a molecular weight of 14.6 kDa.
Synonyms:	Colony-stimulating factor (CSF), Pluripoietin- α , MG11GM
Species of Origin:	Rat
Type:	Recombinant Protein
Low Endotoxin:	Yes

Target Details

Gene Name:	csf2
Purity/Specificity:	Granulocyte Macrophage-Colony Stimulating Factor purity was determined to be greater than 97% as determined by UV spectroscopy at 280 nm, Rp-HpLC calibrated against a known standard, and Quantitation against a known standard via reducing and non-reducing SDS-pAGE gels.
Relevant Links:	<ul style="list-style-type: none">• UniProtKB - P48750

Application Details

Tested Applications:	SDS-PAGE
Suggested Applications:	Cellular Assay (Based on references)
Application Note:	Granulocyte Macrophage Colony Stimulating Factor Recombinant Protein has been tested by SDS-PAGE and biological activity and is suitable as a control for polyclonal or monoclonal anti-Granulocyte Macrophage Colony Stimulating Factor in immunological assays. Lyophilized in 20 mM sodium bicarbonate buffer, pH 8.5.
Assay Dilutions:	All assays should be optimized by the user. Recommended dilutions (if any) may be listed below.
Other:	Endotoxin Level: Measured by kinetic LAL analysis and is typically ≤ 1 EU/ μ g protein. Biologic Activity: The activity is determined by the dose-dependant proliferation of the mouse FDC-P1 cell line and is typically less than 100 pg/mL.

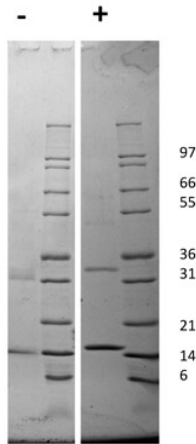
Formulation

Physical State:	Lyophilized
Buffer:	See application note.
Preservative:	None
Stabilizer:	None
Reconstitution Volume:	5 μ l (5-50 μ l)
Reconstitution Buffer:	Restore with deionized water (or equivalent)

Shipping & Handling

Shipping Condition:	Ambient
Storage Condition:	Store vial at 4° C prior to restoration. Dilute only prior to immediate use. Maintain sterility. This product DOES NOT contain preservative. DO NOT VORTEX. We recommend adding a carrier protein such as HSA or BSA to 0.1% (i.e. 1.0 mg/mL). For best results aliquot contents and freeze at -20° C or colder. Avoid cycles of freezing and thawing. Centrifuge vial before each opening to dislodge contents from the cap and to clarify if contents are not clear after standing at room temperature.
Expiration:	Expiration date is six (6) months from date of receipt.

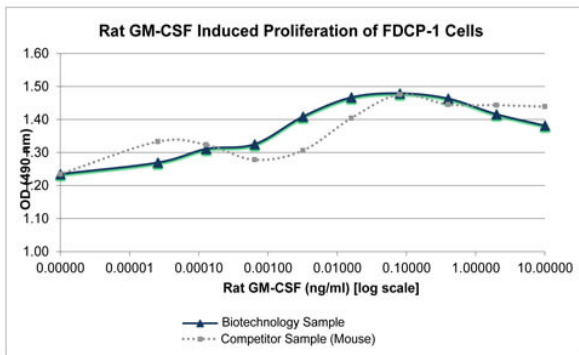
Images



SDS-PAGE

SDS-PAGE of Rat Granulocyte Macrophage-Colony Stimulating Factor Recombinant Protein. Lane 1: 1 µg Rat GM-CSF in non-reducing conditions (-). Lane 2: Molecular weight marker. Lane 3: 1 µg Rat GM-CSF in reducing conditions (+). Lane 4: Molecular weight marker. Rat GM-CSF has a predicted MW of 14.5 kDa.

Rat GM-CSF Bioactivity Data



ELISA

Bioactivity of Rat Granulocyte Macrophage-Colony Stimulating Factor Recombinant Protein. Serial dilutions of Rat GM-CSF, starting at 10 ng/mL, were added to FDCP-1 cells. After 91 hours, cell proliferation was measured and the linear portion of the curve was used to calculate the ED50. The ED50 of Rat GM-CSF is 0.9-1.3 pg/mL. This value is comparable to the typical expected range of less than 0.01 ng/mL.

Disclaimer

This product is for research use only and is not intended for therapeutic or diagnostic applications. Please contact a technical service representative for more information. All products of animal origin manufactured by Rockland Immunochemicals are derived from starting materials of North American origin. Collection was performed in United States Department of Agriculture (USDA) inspected facilities and all materials have been inspected and certified to be free of disease and suitable for exportation. All properties listed are typical characteristics and are not specifications. All suggestions and data are offered in good faith but without guarantee as conditions and methods of use of our products are beyond our control. All claims must be made within 30 days following the date of delivery. The prospective user must determine the suitability of our materials before adopting them on a commercial scale. Suggested uses of our products are not recommendations to use our products in violation of any patent or as a license under any patent of Rockland Immunochemicals, Inc. If you require a commercial license to use this material and do not have one, then return this material, unopened to: Rockland Inc., P.O. BOX 5199, Limerick, Pennsylvania, USA.