



SZABO SCANDIC

Part of Europa Biosite

Produktinformation



Forschungsprodukte & Biochemikalien



Zellkultur & Verbrauchsmaterial



Diagnostik & molekulare Diagnostik



Laborgeräte & Service

Weitere Information auf den folgenden Seiten!
See the following pages for more information!



Lieferung & Zahlungsart

siehe unsere [Liefer- und Versandbedingungen](#)

Zuschläge

- Mindermengenzuschlag
- Trockeneiszuschlag
- Gefahrgutzuschlag
- Expressversand

SZABO-SCANDIC HandelsgmbH

Quellenstraße 110, A-1100 Wien

T. +43(0)1 489 3961-0

F. +43(0)1 489 3961-7

mail@szabo-scandic.com

www.szabo-scandic.com

[linkedin.com/company/szaboscandic](https://www.linkedin.com/company/szaboscandic) 

Datasheet for 012-0050

Rat IgG Agarose

Overview

Description:	Rat IgG Whole Molecule Agarose Conjugated - 012-0050
Item No.:	012-0050
Size:	10 mg
Applications:	Other
Origin:	Rat

Product Details

Background:	Rat IgG whole molecule Agarose Conjugated product is made from IgG, secreted as part of the adaptive immune response by plasma B cells, immunoglobulin G constitutes 75% of serum immunoglobulins. Immunoglobulin G binds to viruses, bacteria, as well as fungi and facilitates their destruction or neutralization via agglutination (and thereby immobilizing them), activation of the compliment cascade, and opsonization for phagocytosis. The whole IgG molecule possesses both the F(c) region, recognized by high-affinity Fc receptor proteins, as well as the F(ab) region possessing the epitope-recognition site. Both heavy and light chains of the antibody molecule are present.
Synonyms:	Rat IgG Whole Molecule Agarose Conjugate, Rat IgG Agarose
Species of Origin:	Rat
Conjugate:	Agarose
Format:	IgG
Type:	Native Protein

Target Details

Purity/Specificity:	This product is normal Rat IgG coupled to activated agarose. A single precipitin arc was observed against anti-Rat Serum when assayed by immunoelectrophoresis prior to coupling to the beads. Sufficient capacity is provided to bind a minimum of 10 mg of anti-Rat IgG.
----------------------------	--

Application Details

Suggested Applications:	Other (Based on references)
Application Note:	Rat IgG Agarose is suitable for immunoprecipitation and Immunoaffinity purifications.
Assay Dilutions:	All assays should be optimized by the user. Recommended dilutions (if any) may be listed below.
IP:	User Optimized

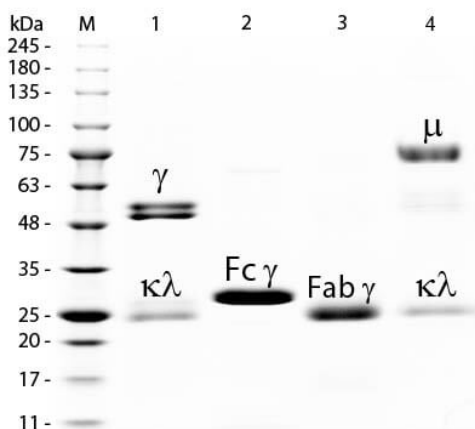
Formulation

Physical State:	Suspension of agarose beads
Buffer:	0.02 M Potassium Phosphate, 0.15 M Sodium Chloride, pH 7.2
Preservative:	0.01% (w/v) Sodium Azide
Stabilizer:	None

Shipping & Handling

Shipping Condition:	Wet Ice
Storage Condition:	Store vial at 4° C prior to opening. DO NOT FREEZE.
Expiration:	Expiration date is one (1) year from date of receipt.

Images



SDS-PAGE

SDS-PAGE of Rat IgG F(c) Fragment Rhodamine Conjugated (p/n 012-0003). Lane M: 3 μ L Opal Prestained Marker (p/n MB-210-0500). Lane 1: Reduced Rat IgG Whole Molecule (p/n 012-0102). Lane 2: Reduced Rat IgG F(c) Fragment Rhodamine Conjugated (p/n 012-0003). Lane 3: Reduced Rat IgG Fab Fragment (p/n 012-0105). Lane 4: Reduced Rat IgM Whole Molecule (p/n 012-0107). Load: 1 μ g of IgG, F(c), Fab; 1.5 μ g of IgM. Predicted/Observed size: IgG at 55 and 25 kDa; F(c) at 25 kDa; Fab at 25 kDa; IgM at 78 and 25 kDa. Observed F(c) Fragment migrates slightly higher.

References

- Dai J et al. Astrocytic laminin-211 drives disseminated breast tumor cell dormancy in brain. *Nat Cancer* (2022)

Disclaimer

This product is for research use only and is not intended for therapeutic or diagnostic applications. Please contact a technical service representative for more information. All products of animal origin manufactured by Rockland Immunochemicals are derived from starting materials of North American origin. Collection was performed in United States Department of Agriculture (USDA) inspected facilities and all materials have been inspected and certified to be free of disease and suitable for exportation. All properties listed are typical characteristics and are not specifications. All suggestions and data are offered in good faith but without guarantee as conditions and methods of use of our products are beyond our control. All claims must be made within 30 days following the date of delivery. The prospective user must determine the suitability of our materials before adopting them on a commercial scale. Suggested uses of our products are not recommendations to use our products in violation of any patent or as a license under any patent of Rockland Immunochemicals, Inc. If you require a commercial license to use this material and do not have one, then return this material, unopened to: Rockland Inc., P.O. BOX 5199, Limerick, Pennsylvania, USA.