



SZABO SCANDIC

Part of Europa Biosite

Produktinformation



Forschungsprodukte & Biochemikalien



Zellkultur & Verbrauchsmaterial



Diagnostik & molekulare Diagnostik



Laborgeräte & Service

Weitere Information auf den folgenden Seiten!
See the following pages for more information!



Lieferung & Zahlungsart

siehe unsere [Liefer- und Versandbedingungen](#)

Zuschläge

- Mindermengenzuschlag
- Trockeneiszuschlag
- Gefahrgutzuschlag
- Expressversand

SZABO-SCANDIC HandelsgmbH

Quellenstraße 110, A-1100 Wien

T. +43(0)1 489 3961-0

F. +43(0)1 489 3961-7

mail@szabo-scandic.com

www.szabo-scandic.com

[linkedin.com/company/szaboscandic](https://www.linkedin.com/company/szaboscandic) 

Datasheet for 012-008-040

Rat IgG1 isotype control Phycoerythrin

Overview

Description:	Rat IgG1 Isotype Control Phycoerythrin Conjugated - 012-008-040
Item No.:	012-008-040
Size:	500 µg
Applications:	Dot Blot
Origin:	Rat

Product Details

Background:	RAT IgG1 isotype control is used in flow cytometry, western blot and ELISA and differentiate between immunoglobulin classes and subclasses. Isotype controls allow for the genetic variations or differences in the constant regions of the heavy and light chains. In Rat there are six relevant heavy chain isotypes and two light chain isotypes: heavy chain alpha - IgA, gamma - IgG 1, 2a, 2b, 2c and µ - IgM, light chain kappa and lambda.
Synonyms:	Rat Isotype Control, Rat IgG1 PE isotype, RAT IgG1 subclass isotype control
Species of Origin:	Rat
Conjugate:	R-Phycoerythrin (RPE)
Clone ID:	RG1
Format:	IgG1
Type:	Native Protein
F/P Ratio:	3.7

Target Details

Purity/Specificity:	RAT IgG1 isotype control has been prepared from concentrated cell culture supernatant by immunoaffinity chromatography using protein G. Assay by immunoelectrophoresis resulted in a single precipitin arc against anti-phycoerythrin, anti-Rat IgG and anti-Rat serum. Isotyping assay resulted non-reactive with antisera to Rat IgG2a, IgG2b, IgG3, IgM, and IgA. Phycoerythrin Conjugated Rat IgG1 confirmed by Dot Blot.
----------------------------	---

Application Details

Tested Applications:	Dot Blot
Application Note:	RAT IgG1 isotype control has been tested in dot blot and can be utilized as a control or standard reagent in Western Blotting, Flow Cytometry, and ELISA experiments where determination of sample isotype is important. Specific conditions should be optimized by user.
Assay Dilutions:	All assays should be optimized by the user. Recommended dilutions (if any) may be listed below.
ELISA:	1:2000 - 1:20,000
FC:	1:1000-1:5000
FLISA:	User Optimized
IF:	User Optimized

Formulation

Physical State:	Lyophilized
Concentration:	0.5 mg/mL by absorbance = 82.0 at 565 nm
Buffer:	0.01 M Sodium Phosphate, 0.25 M Sodium Chloride, pH 7.2
Preservative:	0.01% (w/v) Sodium Azide
Stabilizer:	10 mg/mL Bovine Serum Albumin (BSA) - Immunoglobulin and Protease free
Reconstitution Volume:	1.0 mL
Reconstitution Buffer:	Restore with deionized water (or equivalent)

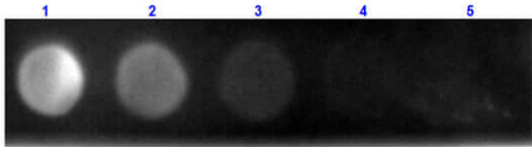
Shipping & Handling

Shipping Condition:	Ambient
Storage Condition:	Store vial at 4° C prior to restoration. Restore with deionized water (or equivalent). This product is stable at 4° C as an undiluted liquid. Dilute only prior to immediate use. Centrifuge product if not completely clear after standing at room temperature. Do not freeze after reconstitution. Store reagent in the dark. Use subdued lighting during handling and incubation of cells prior to analysis.
Expiration:	Expiration date is one (1) year from date of receipt.

Images

Dot Blot

Dot Blot results of Rat IgG1 isotype control Phycoerythrin Conjugated. Antigen: Rat IgG1 isotype control RPE Conjugated. Blot loaded at 3 fold dilution: 1. 100ng, 2. 33.3ng, 3. 11.1ng, 4. 3.70ng, 5. 1.23ng. Blocking: MB-070 Buffer for 30 minutes at RT. Imaging System ChemiDoc, Filter used: Rhodamine.

**Disclaimer**

This product is for research use only and is not intended for therapeutic or diagnostic applications. Please contact a technical service representative for more information. All products of animal origin manufactured by Rockland Immunochemicals are derived from starting materials of North American origin. Collection was performed in United States Department of Agriculture (USDA) inspected facilities and all materials have been inspected and certified to be free of disease and suitable for exportation. All properties listed are typical characteristics and are not specifications. All suggestions and data are offered in good faith but without guarantee as conditions and methods of use of our products are beyond our control. All claims must be made within 30 days following the date of delivery. The prospective user must determine the suitability of our materials before adopting them on a commercial scale. Suggested uses of our products are not recommendations to use our products in violation of any patent or as a license under any patent of Rockland Immunochemicals, Inc. If you require a commercial license to use this material and do not have one, then return this material, unopened to: Rockland Inc., P.O. BOX 5199, Limerick, Pennsylvania, USA.