



SZABO SCANDIC

Part of Europa Biosite

Produktinformation



Forschungsprodukte & Biochemikalien



Zellkultur & Verbrauchsmaterial



Diagnostik & molekulare Diagnostik



Laborgeräte & Service

Weitere Information auf den folgenden Seiten!
See the following pages for more information!



Lieferung & Zahlungsart

siehe unsere [Liefer- und Versandbedingungen](#)

Zuschläge

- Mindermengenzuschlag
- Trockeneiszuschlag
- Gefahrgutzuschlag
- Expressversand

SZABO-SCANDIC HandelsgmbH

Quellenstraße 110, A-1100 Wien

T. +43(0)1 489 3961-0

F. +43(0)1 489 3961-7

mail@szabo-scandic.com

www.szabo-scandic.com

[linkedin.com/company/szaboscandic](https://www.linkedin.com/company/szaboscandic) 

Datasheet for 012-0107**Rat IgM****Overview**

Description:	Rat IgM Whole Molecule - 012-0107
Item No.:	012-0107
Size:	1 mg
Applications:	SDS-PAGE
Origin:	Rat

Product Details

Background:	Immunoglobulin M is the largest antibody isotype and the first to be secreted against an initial exposure to antigen. IgM is predominantly produced in the spleen. Formed from covalently linking 5 immunoglobulins together, the approximate molecular weight of IgM is 900kDa and possesses 10 binding sites (though due to the size of most antigens, not all sites are capable of binding at once). Due to this large size, IgM is typically isolated to the serum.
Synonyms:	Rat Immunoglobulin M
Species of Origin:	Rat
Format:	IgM
Type:	Native Protein

Target Details

Purity/Specificity:	Rat IgM whole molecule was prepared from normal serum by a multi-step process which includes delipidation, selective precipitation and tandem molecular sieve chromatography followed by extensive dialysis against the buffer stated above. Rat IgM whole molecule assayed by immunoelectrophoresis resulted in a single precipitin arc against anti-Rat Serum and anti-Rat IgM (μ chain specific). No reaction was observed against anti-Rat IgG F(c). Some light chain cross-reactivity will occur with anti-Rat IgG.
----------------------------	---

Application Details

Tested Applications:	SDS-PAGE
-----------------------------	----------

Application Note: Rat IgM whole molecule has been tested in SDS-Page and can be utilized as a control or standard reagent in Western Blotting and ELISA experiments.

Assay Dilutions: All assays should be optimized by the user. Recommended dilutions (if any) may be listed below.

ELISA: User Optimized

IHC: User Optimized

WB: User Optimized

Formulation

Physical State: Liquid (sterile filtered)

Concentration: 1.1 mg/mL by UV absorbance at 280 nm

Buffer: 0.1 M Tris Chloride, 0.5 M Sodium Chloride, pH 8.0

Preservative: 0.01% (w/v) Sodium Azide

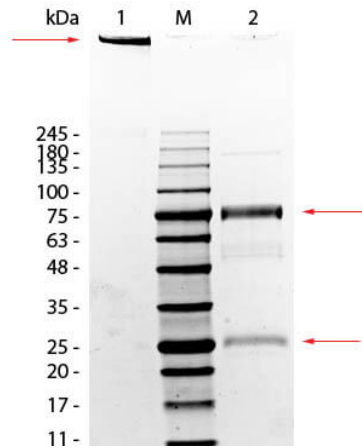
Shipping & Handling

Shipping Condition: Wet Ice

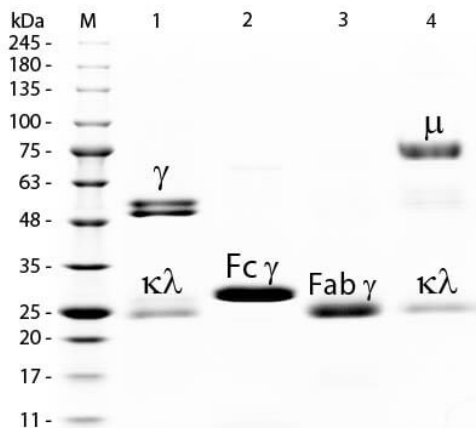
Storage Condition: Store vial at 4° C prior to opening. Rat IgM whole molecule is stable 4° C as an undiluted liquid. Dilute only prior to immediate use. For extended storage mix with an equal volume of glycerol, aliquot contents and freeze at -20° C or below. Avoid cycles of freezing and thawing.

Expiration: Expiration date is one (1) year from date of receipt.

Images


Western Blot

SDS-Page of Rat IgM Whole Molecule. Lane 1: Rat IgM, Non-Reduced. Lane 2: Rat IgM, Reduced. Load: 1.0 µg per lane. Predicted/Observed size-Predicted/Observed size - Non-Reduced: 900 kDa (Pentamer), 900 kDa (Molecule larger than can pass through gel), Reduced: 78 and 25 kDa, 78 and 25 kDa.


SDS-PAGE

SDS-PAGE of Rat IgG F(c) Fragment Rhodamine Conjugated (p/n 012-0003). Lane M: 3 µL Opal Prestained Marker (p/n MB-210-0500). Lane 1: Reduced Rat IgG Whole Molecule (p/n 012-0102). Lane 2: Reduced Rat IgG F(c) Fragment Rhodamine Conjugated (p/n 012-0003). Lane 3: Reduced Rat IgG Fab Fragment (p/n 012-0105). Lane 4: Reduced Rat IgM Whole Molecule (p/n 012-0107). Load: 1 µg of IgG, F(c), Fab; 1.5 µg of IgM. Predicted/Observed size: IgG at 55 and 25 kDa; F(c) at 25 kDa; Fab at 25 kDa; IgM at 78 and 25 kDa. Observed F(c) Fragment migrates slightly higher.

Disclaimer

This product is for research use only and is not intended for therapeutic or diagnostic applications. Please contact a technical service representative for more information. All products of animal origin manufactured by Rockland Immunochemicals are derived from starting materials of North American origin. Collection was performed in United States Department of Agriculture (USDA) inspected facilities and all materials have been inspected and certified to be free of disease and suitable for exportation. All properties listed are typical characteristics and are not specifications. All suggestions and data are offered in good faith but without guarantee as conditions and methods of use of our products are beyond our control. All claims must be made within 30 days following the date of delivery. The prospective user must determine the suitability of our materials before adopting them on a commercial scale. Suggested uses of our products are not recommendations to use our products in violation of any patent or as a license under any patent of Rockland Immunochemicals, Inc. If you require a commercial license to use this material and do not have one, then return this material, unopened to: Rockland Inc., P.O. BOX 5199, Limerick, Pennsylvania, USA.