



# SZABO SCANDIC

Part of Europa Biosite

## Produktinformation



Forschungsprodukte & Biochemikalien



Zellkultur & Verbrauchsmaterial



Diagnostik & molekulare Diagnostik



Laborgeräte & Service

Weitere Information auf den folgenden Seiten!  
See the following pages for more information!



### Lieferung & Zahlungsart

siehe unsere [Liefer- und Versandbedingungen](#)

### Zuschläge

- Mindermengenzuschlag
- Trockeneiszuschlag
- Gefahrgutzuschlag
- Expressversand

### SZABO-SCANDIC HandelsgmbH

Quellenstraße 110, A-1100 Wien

T. +43(0)1 489 3961-0

F. +43(0)1 489 3961-7

[mail@szabo-scandic.com](mailto:mail@szabo-scandic.com)

[www.szabo-scandic.com](http://www.szabo-scandic.com)

[linkedin.com/company/szaboscandic](https://www.linkedin.com/company/szaboscandic) 

## Datasheet for 012-0304

## Rat IgG F(ab')<sub>2</sub> Peroxidase

### Overview

<b>Description:</b>	Rat IgG F(ab') <sub>2</sub> Fragment Peroxidase Conjugated - 012-0304
<b>Item No.:</b>	012-0304
<b>Size:</b>	1 mg
<b>Origin:</b>	Rat

### Product Details

<b>Background:</b>	Rat IgG F(ab') <sub>2</sub> Fragment Peroxidase Conjugated is a proteolytic fragment of immunoglobulin G (IgG) obtained by limited digestion with the enzyme pepsin under controlled conditions of temperature, time and pH. Rat IgG F(ab') <sub>2</sub> molecules lack the Fc portion of Rat IgG and therefore receptors that bind Rat IgG Fc will not bind Rat IgG F(ab') <sub>2</sub> molecules. This product possesses the F(ab') <sub>2</sub> fragment, recognized by the two F(ab) fragments yielded from the digestion of the antibody below the disulfide bond hinge region followed by Peroxidase conjugation.
<b>Synonyms:</b>	Rat IgG F(ab') <sub>2</sub> fragment peroxidase conjugation, Rat IgG F(ab') <sub>2</sub> fragment HRP conjugated
<b>Species of Origin:</b>	Rat
<b>Conjugate:</b>	Peroxidase (HRP)
<b>Format:</b>	IgG F(ab') <sub>2</sub>
<b>Type:</b>	Native Protein

### Target Details

<b>Purity/Specificity:</b>	This product was prepared from normal serum by delipidation, salt fractionation, ion exchange chromatography followed by pepsin digestion and extensive dialysis against the buffer stated above. Assay by immunoelectrophoresis resulted in a single precipitin arc against anti-Peroxidase, anti- Rat IgG, anti-Rat IgG F(ab') <sub>2</sub> and anti-Rat Serum. No reaction was observed against anti-Rat IgG F(c) or anti-Pepsin.
----------------------------	--

### Application Details

<b>Application Note:</b>	Rat IgG F(ab') <sub>2</sub> Fragment Peroxidase Conjugated reagents are ideal for ELISA, western blotting,
--------------------------	--

Immunohistochemistry, as well as other antibody detection methods.

---

**Assay Dilutions:** All assays should be optimized by the user. Recommended dilutions (if any) may be listed below.

---

## Formulation

---

**Physical State:** Lyophilized

---

**Concentration:** 1.0 mg/mL by UV absorbance at 280 nm

---

**Buffer:** 0.01 M Sodium Phosphate, 0.15 M Sodium Chloride, pH 7.2

---

**Preservative:** 0.01% (w/v) Thimerosal

---

**Stabilizer:** 10 mg/mL Bovine Serum Albumin (BSA) - Immunoglobulin and Protease free

---

**Reconstitution Volume:** 1.0 mL

---

**Reconstitution Buffer:** Restore with deionized water (or equivalent)

---

## Shipping & Handling

---

**Shipping Condition:** Ambient

---

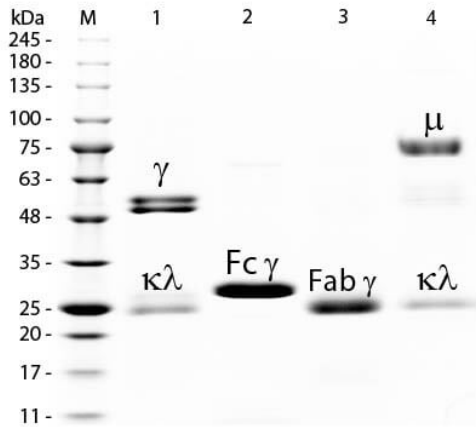
**Storage Condition:** Store vial at 4° C prior to restoration. For extended storage aliquot contents and freeze at -20° C or below. Avoid cycles of freezing and thawing. Centrifuge product if not completely clear after standing at room temperature. This product is stable for several weeks at 4° C as an undiluted liquid. Dilute only prior to immediate use.

---

**Expiration:** Expiration date is one (1) year from date of receipt.

---

## Images


**SDS-PAGE**

SDS-PAGE of Rat IgG F(c) Fragment Rhodamine Conjugated (p/n 012-0003). Lane M: 3  $\mu$ L Opal Prestained Marker (p/n MB-210-0500). Lane 1: Reduced Rat IgG Whole Molecule (p/n 012-0102). Lane 2: Reduced Rat IgG F(c) Fragment Rhodamine Conjugated (p/n 012-0003). Lane 3: Reduced Rat IgG Fab Fragment (p/n 012-0105). Lane 4: Reduced Rat IgM Whole Molecule (p/n 012-0107). Load: 1  $\mu$ g of IgG, F(c), Fab; 1.5  $\mu$ g of IgM. Predicted/Observed size: IgG at 55 and 25 kDa; F(c) at 25 kDa; Fab at 25 kDa; IgM at 78 and 25 kDa. Observed F(c) Fragment migrates slightly higher.

**Disclaimer**

This product is for research use only and is not intended for therapeutic or diagnostic applications. Please contact a technical service representative for more information. All products of animal origin manufactured by Rockland Immunochemicals are derived from starting materials of North American origin. Collection was performed in United States Department of Agriculture (USDA) inspected facilities and all materials have been inspected and certified to be free of disease and suitable for exportation. All properties listed are typical characteristics and are not specifications. All suggestions and data are offered in good faith but without guarantee as conditions and methods of use of our products are beyond our control. All claims must be made within 30 days following the date of delivery. The prospective user must determine the suitability of our materials before adopting them on a commercial scale. Suggested uses of our products are not recommendations to use our products in violation of any patent or as a license under any patent of Rockland Immunochemicals, Inc. If you require a commercial license to use this material and do not have one, then return this material, unopened to: Rockland Inc., P.O. BOX 5199, Limerick, Pennsylvania, USA.