



# SZABO SCANDIC

Part of Europa Biosite

## Produktinformation



Forschungsprodukte & Biochemikalien



Zellkultur & Verbrauchsmaterial



Diagnostik & molekulare Diagnostik



Laborgeräte & Service

Weitere Information auf den folgenden Seiten!  
See the following pages for more information!



### Lieferung & Zahlungsart

siehe unsere [Liefer- und Versandbedingungen](#)

### Zuschläge

- Mindermengenzuschlag
- Trockeneiszuschlag
- Gefahrgutzuschlag
- Expressversand

### SZABO-SCANDIC HandelsgmbH

Quellenstraße 110, A-1100 Wien

T. +43(0)1 489 3961-0

F. +43(0)1 489 3961-7

[mail@szabo-scandic.com](mailto:mail@szabo-scandic.com)

[www.szabo-scandic.com](http://www.szabo-scandic.com)

[linkedin.com/company/szaboscandic](https://www.linkedin.com/company/szaboscandic) 

**Datasheet for 016-0102-0010**

## Donkey IgG

### Overview

|                      |   |
|----------------------|---|
| <b>Description:</b>  | Donkey IgG Whole Molecule - 016-0102-0010 |
| <b>Item No.:</b>     | 016-0102-0010                             |
| <b>Size:</b>         | 10 mg                                     |
| <b>Applications:</b> | SDS-PAGE                                  |
| <b>Origin:</b>       | Donkey                                    |

### Product Details

|                           |  |
|---------------------------|--|
| <b>Background:</b>        | Donkey IgG whole molecule - secreted as part of the adaptive immune response by plasma B cells, immunoglobulin G constitutes 75% of serum immunoglobulins. Immunoglobulin G binds to viruses, bacteria, as well as fungi and facilitates their destruction or neutralization via agglutination (and thereby immobilizing them), activation of the compliment cascade, and opsonization for phagocytosis. The whole IgG molecule possesses both the F(c) region, recognized by high-affinity Fc receptor proteins, as well as the F(ab) region possessing the epitope-recognition site. Both heavy and light chains of the antibody molecule are present. |
| <b>Synonyms:</b>          | Donkey IgG whole molecule  |
| <b>Species of Origin:</b> | Donkey   |
| <b>Format:</b>            | IgG  |
| <b>Type:</b>              | Native Protein   |

### Target Details

|                            |   |
|----------------------------|---|
| <b>Purity/Specificity:</b> | This product was prepared from normal serum by a multi-step process which includes delipidation, salt fractionation and ion exchange chromatography followed by extensive dialysis against the buffer stated above. Assay by immunoelectrophoresis resulted in a single precipitin arc against anti-Donkey IgG and anti-Donkey Serum. |
|----------------------------|---|

### Application Details

|                             |          |
|-----------------------------|----------|
| <b>Tested Applications:</b> | SDS-PAGE |
|-----------------------------|----------|

**Application Note:** Donkey IgG whole molecule has been tested by SDS-Page and are ideal for ELISA, western blotting, Immunohistochemistry, Fluorescence Microscopy, Flow Cytometry as well as other antibody detection methods.

**Assay Dilutions:** All assays should be optimized by the user. Recommended dilutions (if any) may be listed below.

## Formulation

**Physical State:** Lyophilized

**Concentration:** 10.0 mg/mL by UV absorbance at 280 nm

**Buffer:** 0.02 M Potassium Phosphate, 0.15 M Sodium Chloride, pH 7.2

**Preservative:** 0.01% (w/v) Sodium Azide

**Stabilizer:** None

**Reconstitution Volume:** 1.0 mL

**Reconstitution Buffer:** Restore with deionized water (or equivalent)

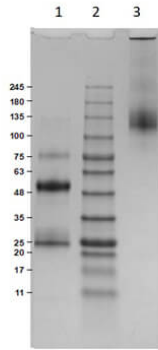
## Shipping & Handling

**Shipping Condition:** Ambient

**Storage Condition:** Store vial at 4° C prior to restoration. For extended storage aliquot contents and freeze at -20° C or below. Avoid cycles of freezing and thawing. Centrifuge product if not completely clear after standing at room temperature. This product is stable for several weeks at 4° C as an undiluted liquid. Dilute only prior to immediate use.

**Expiration:** Expiration date is one (1) year from date of receipt.

## Images

**SDS-PAGE**

SDS-PAGE of Donkey IgG Whole Molecule. Lane 1: Donkey IgG Whole Molecule Reduced (1.0µg). Lane 2: Opal Prestained Molecular Weight Marker (p/n MB-210-0500). Lane 3: Donkey IgG Whole Molecule Non-Reduced (1.0µg). 4 -20% Gel, Coomassie Stained.

**Disclaimer**

This product is for research use only and is not intended for therapeutic or diagnostic applications. Please contact a technical service representative for more information. All products of animal origin manufactured by Rockland Immunochemicals are derived from starting materials of North American origin. Collection was performed in United States Department of Agriculture (USDA) inspected facilities and all materials have been inspected and certified to be free of disease and suitable for exportation. All properties listed are typical characteristics and are not specifications. All suggestions and data are offered in good faith but without guarantee as conditions and methods of use of our products are beyond our control. All claims must be made within 30 days following the date of delivery. The prospective user must determine the suitability of our materials before adopting them on a commercial scale. Suggested uses of our products are not recommendations to use our products in violation of any patent or as a license under any patent of Rockland Immunochemicals, Inc. If you require a commercial license to use this material and do not have one, then return this material, unopened to: Rockland Inc., P.O. BOX 5199, Limerick, Pennsylvania, USA.