



SZABO SCANDIC

Part of Europa Biosite

Produktinformation



Forschungsprodukte & Biochemikalien



Zellkultur & Verbrauchsmaterial



Diagnostik & molekulare Diagnostik



Laborgeräte & Service

Weitere Information auf den folgenden Seiten!
See the following pages for more information!



Lieferung & Zahlungsart

siehe unsere [Liefer- und Versandbedingungen](#)

Zuschläge

- Mindermengenzuschlag
- Trockeneiszuschlag
- Gefahrgutzuschlag
- Expressversand

SZABO-SCANDIC HandelsgmbH

Quellenstraße 110, A-1100 Wien

T. +43(0)1 489 3961-0

F. +43(0)1 489 3961-7

mail@szabo-scandic.com

www.szabo-scandic.com

[linkedin.com/company/szaboscandic](https://www.linkedin.com/company/szaboscandic) 

Datasheet for 100-101-211

Glycerol Kinase Antibody

Overview

Description:	Anti-Glycerol Kinase (Cellulomonas species) (GOAT) Antibody - 100-101-211
Item No.:	100-101-211
Size:	2 mL
Applications:	WB
Reactivity:	Glycerol Kinase (Cellulomonas)
Host Species:	Goat

Product Details

Background:	Glycerol Kinase is the key enzyme in the regulation of glycerol uptake and metabolism. It catalyzes the phosphorylation of glycerol to yield sn-glycerol 3-phosphate. It is inhibited by fructose 1,6-bisphosphate (FBP). This protein is involved in step 1 of the subpathway that synthesizes sn-glycerol 3-phosphate from glycerol.
Synonyms:	goat anti-Glycerol Kinase Antibody, ATP glycerol 3 phosphotransferase antibody, GK antibody, GK1 antibody, GKD antibody, Glycerokinase antibody, Glycerol kinase antibody, Glycerol kinase deficiency antibody
Host Species:	Goat
Clonality:	Polyclonal
Format:	Antiserum

Target Details

Gene Name:	glpK
Reactivity:	Glycerol Kinase (Cellulomonas)
Immunogen Type:	Native Protein
Immunogen:	Glycerol Kinase [Cellulomonas species]

Purity/Specificity: This product was prepared from monospecific antiserum by a delipidation and defibrination. Assay by immunoelectrophoresis resulted in a single precipitin arc against anti-goat serum, purified and partially purified Glycerol Kinase [Cellulomonas species]. Cross reactivity against Glycerol Kinase from other sources is unknown.

Relevant Links:

- [UniProtKB - D0VZG4](#)
- [NCBI - BAI49417.1](#)
- [GeneID - 6960048](#)

Application Details

Tested Applications: WB

Application Note: Anti-Glycerol Kinase has been tested by western blot and is suitable to be assayed against 1.0 µg of Glycerol Kinase [Cellulomonas species] in a standard ELISA using Peroxidase conjugated Affinity Purified anti-Goat IgG [H&L] (Rabbit) code #605-4302 and (ABTS (2,2'-azino-bis-[3-ethylbenthiiazoline-6-sulfonic acid]) code # ABTS-100 as a substrate for 30 minutes at room temperature. A working dilution of 1:1,000 to 1:2,000 of the reconstitution concentration is suggested for this product.

Assay Dilutions: All assays should be optimized by the user. Recommended dilutions (if any) may be listed below.

ELISA: 1:4,000 - 1:20,000

WB: 1:500 - 1:2,000

Formulation

Physical State: Lyophilized

Concentration: 90 mg/mL by Refractometry

Buffer: 0.02 M Potassium Phosphate, 0.15 M Sodium Chloride, pH 7.2

Preservative: 0.01% (w/v) Sodium Azide

Stabilizer: None

Reconstitution Volume: 2.0 mL

Reconstitution Buffer: Restore with deionized water (or equivalent)

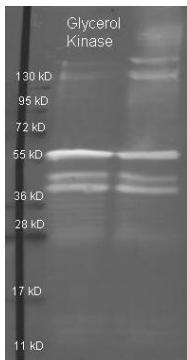
Shipping & Handling

Shipping Condition: Ambient

Storage Condition: Store vial at 4° C prior to restoration. For extended storage aliquot contents and freeze at -20° C or below. Avoid cycles of freezing and thawing. Centrifuge product if not completely clear after standing at room temperature. This product is stable for several weeks at 4° C as an undiluted liquid. Dilute only prior to immediate use.

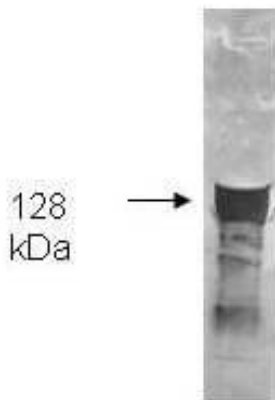
Expiration: Expiration date is one (1) year from date of receipt.

Images



Western Blot

Rockland Goat anti Glycerol Kinase antibody (200-101-211 lot 5912) was used to detect purified Glycerol Kinase under reducing (R) and non-reducing (NR) conditions. Reduced samples of purified protein contained 4% BME and were boiled for 5 minutes. Samples of ~1ug of protein per lane were run by SDS-PAGE. Protein was transferred to nitrocellulose and probed with 1:3000 dilution of primary antibody (ON 4 C in MB-070). Detection shown was using Dylight 488 conjugated Donkey anti goat (605-741-125 lot 21094 1:10K in TBS/MB-070 1 hr RT). Images were collected using the BioRad VersaDoc System.



Western Blot

Both the antiserum and IgG fractions of anti-Glycerol Kinase (Cellulomonas) are shown to detect the 128,000 dalton enzyme in cellular extracts. Approximately 10 ug of total protein is loaded per lane. A 1:4,000 dilution of the primary antibody is used followed by detection using HRP Rabbit-a-Goat IgG [H&L] (605-4302) diluted 1:4,000 and color development using 4-CN substrate until sufficient color develops. Other detection systems will yield similar results.

Disclaimer

This product is for research use only and is not intended for therapeutic or diagnostic applications. Please contact a technical service representative for more information. All products of animal origin manufactured by Rockland Immunochemicals are derived from starting materials of North American origin. Collection was performed in United States Department of Agriculture (USDA) inspected facilities and all materials have been inspected and certified to be free of disease and suitable for exportation. All properties listed are typical characteristics and are not specifications. All suggestions and data are offered in good faith but without guarantee as conditions and methods of use of our products are beyond our control. All claims must be made within 30 days following the date of delivery. The prospective user must determine the suitability of our materials before adopting them on a commercial scale. Suggested uses of our products are not recommendations to use our products in violation of any patent or as a license under any patent of Rockland Immunochemicals, Inc. If you require a commercial license to use this material and do not have one, then return this material, unopened to: Rockland Inc., P.O. BOX 5199, Limerick, Pennsylvania, USA.