



SZABO SCANDIC

Part of Europa Biosite

Produktinformation



Forschungsprodukte & Biochemikalien



Zellkultur & Verbrauchsmaterial



Diagnostik & molekulare Diagnostik



Laborgeräte & Service

Weitere Information auf den folgenden Seiten!
See the following pages for more information!



Lieferung & Zahlungsart

siehe unsere [Liefer- und Versandbedingungen](#)

Zuschläge

- Mindermengenzuschlag
- Trockeneiszuschlag
- Gefahrgutzuschlag
- Expressversand

SZABO-SCANDIC HandelsgmbH

Quellenstraße 110, A-1100 Wien

T. +43(0)1 489 3961-0

F. +43(0)1 489 3961-7

mail@szabo-scandic.com

www.szabo-scandic.com

[linkedin.com/company/szaboscandic](https://www.linkedin.com/company/szaboscandic) 

Datasheet for 100-101-212

Bilirubin Oxidase Antibody

Overview

Description:	Anti-Bilirubin Oxidase (Myrothecium verrucaria) (GOAT) Antibody - 100-101-212
Item No.:	100-101-212
Size:	2 mL
Applications:	WB
Reactivity:	Myrothecium verrucaria
Host Species:	Goat

Product Details

Background:	Bilirubin Oxidase oxidizes bilirubin and other tetrapyrroles.
Synonyms:	goat anti-Bilirubin Oxidase Antibody, Bilirubin Oxidase
Host Species:	Goat
Clonality:	Polyclonal
Format:	Antiserum

Target Details

Gene Name:	BLRO_MYRVE
Reactivity:	Myrothecium verrucaria
Immunogen Type:	Native Protein
Immunogen:	Bilirubin Oxidase (Myrothecium verrucaria)
Purity/Specificity:	This product was prepared from monospecific antiserum by delipidation and defibrination. Assay by immunoelectrophoresis resulted in a single precipitin arc against anti-goat serum, purified and partially purified Bilirubin Oxidase (Myrothecium verrucaria). Cross-reactivity against Bilirubin Oxidase from other sources is unknown.
Relevant Links:	<ul style="list-style-type: none">UniProtKB - Q12737

Application Details

Tested Applications:	WB
Application Note:	Anti-Bilirubin Oxidase has been tested by western blot and is suitable for use in ELISA, western blot, immunohistochemistry, and immunoprecipitation. Specific conditions for reactivity should be optimized by the end user.
Assay Dilutions:	All assays should be optimized by the user. Recommended dilutions (if any) may be listed below.
ELISA:	1:25,000
IHC:	1:1,000 - 1:5,000
IP:	1:100
WB:	1:2,000 - 1:10,000

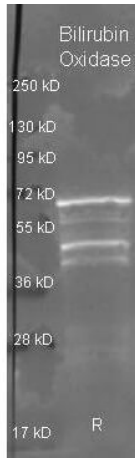
Formulation

Physical State:	Lyophilized
Concentration:	95 mg/mL by Refractometry
Buffer:	0.02 M Potassium Phosphate, 0.15 M Sodium Chloride, pH 7.2
Preservative:	0.01% (w/v) Sodium Azide
Stabilizer:	None
Reconstitution Volume:	2.0 mL
Reconstitution Buffer:	Restore with deionized water (or equivalent)

Shipping & Handling

Shipping Condition:	Ambient
Storage Condition:	Store vial at 4° C prior to restoration. For extended storage aliquot contents and freeze at -20° C or below. Avoid cycles of freezing and thawing. Centrifuge product if not completely clear after standing at room temperature. This product is stable for several weeks at 4° C as an undiluted liquid. Dilute only prior to immediate use.
Expiration:	Expiration date is one (1) year from date of receipt.

Images



Western Blot

Rockland Goat anti Bilirubin Oxidase antibody (200-101-212 lot 6533) was used to detect Bilirubin Oxidase under reducing (R) conditions. A samples of ~1ug of purified protein contained 4% BME and was boiled for 5 minutes and run by SDS-PAGE on a 4-20% acrylamide gel. Protein was transferred to nitrocellulose and probed with 1:3000 dilution of primary antibody (ON 4 C in MB-070). Detection shown was using Dylight 488 conjugated Donkey anti goat (605-741-125 lot 21094 1:10K in TBS/MB-070 1 hr RT) and Dylight 649 conjugated Donkey anti goat (605-743-125 lot 20834 1:10K in TBS/MB-070) 1 hr RT. Images were collected using the BioRad VersaDoc System

Disclaimer

This product is for research use only and is not intended for therapeutic or diagnostic applications. Please contact a technical service representative for more information. All products of animal origin manufactured by Rockland Immunochemicals are derived from starting materials of North American origin. Collection was performed in United States Department of Agriculture (USDA) inspected facilities and all materials have been inspected and certified to be free of disease and suitable for exportation. All properties listed are typical characteristics and are not specifications. All suggestions and data are offered in good faith but without guarantee as conditions and methods of use of our products are beyond our control. All claims must be made within 30 days following the date of delivery. The prospective user must determine the suitability of our materials before adopting them on a commercial scale. Suggested uses of our products are not recommendations to use our products in violation of any patent or as a license under any patent of Rockland Immunochemicals, Inc. If you require a commercial license to use this material and do not have one, then return this material, unopened to: Rockland Inc., P.O. BOX 5199, Limerick, Pennsylvania, USA.