



SZABO SCANDIC

Part of Europa Biosite

Produktinformation



Forschungsprodukte & Biochemikalien



Zellkultur & Verbrauchsmaterial



Diagnostik & molekulare Diagnostik



Laborgeräte & Service

Weitere Information auf den folgenden Seiten!
See the following pages for more information!



Lieferung & Zahlungsart

siehe unsere [Liefer- und Versandbedingungen](#)

Zuschläge

- Mindermengenzuschlag
- Trockeneiszuschlag
- Gefahrgutzuschlag
- Expressversand

SZABO-SCANDIC HandelsgmbH

Quellenstraße 110, A-1100 Wien

T. +43(0)1 489 3961-0

F. +43(0)1 489 3961-7

mail@szabo-scandic.com

www.szabo-scandic.com

[linkedin.com/company/szaboscandic](https://www.linkedin.com/company/szaboscandic) 

Datasheet for 100-101-237

Beta-Phosphoglucomutase Antibody

Overview

Description:	Anti-Beta Phosphoglucomutase (GOAT) Antibody - 100-101-237
Item No.:	100-101-237
Size:	2 mL
Applications:	WB
Reactivity:	Lactococcus lacti
Host Species:	Goat

Product Details

Background:	Beta-Phosphoglucomutase catalyzes the interconversion of D-glucose 1-phosphate (G1P) and D-glucose 6-phosphate (G6P), forming beta-D-glucose 1,6-(bis)phosphate (beta-G16P) as an intermediate. The beta-phosphoglucomutase (Beta-PGM) acts on the beta-C1 anomer of G1P. Glucose or lactose are used in preference to maltose, which is only utilized after glucose or lactose has been exhausted. It plays a key role in the regulation of the flow of carbohydrate intermediates in glycolysis and the formation of the sugar nucleotide UDP-glucose. The catalysis proceeds via a phosphoenzyme formed by reaction of an active-site nucleophile with the cofactor glucose 1,6-diphosphate (G1,6-diP). The phosphorylated mutase binds either G1P or G6P and transfers the phosphoryl group to the C6OH or C1OH, respectively.
Synonyms:	goat anti-Beta-Phosphoglucomutase Antibody, Beta PGM antibody, Glucose phosphomutase 1 antibody, Glucose phosphomutase antibody, PGM antibody, pgmB antibody
Host Species:	Goat
Clonality:	Polyclonal
Format:	Antiserum

Target Details

Gene Name:	pgmB
Reactivity:	Lactococcus lacti
Immunogen Type:	Native Protein
Immunogen:	Beta Phosphoglucomutase [Lactococcus lacti]

Purity/Specificity: This product was prepared from monospecific antiserum by a delipidation and defibrination. Assay by immunoelectrophoresis resulted in a single precipitin arc against anti-goat serum, purified and partially purified b-Phosphoglucomutase [*Lactococcus lacti*]. Cross reactivity against b-Phosphoglucomutase from other sources is unknown.

Relevant Links:

- [UniProtKB - P71447](#)
- [NCBI - CAA94734.1](#)
- [GeneID - 1114041](#)

Application Details

Tested Applications: WB

Application Note: Anti-Beta-Phosphoglucomutase has been tested by western blot and is suitable to be assayed against 1.0 µg of b-Phosphoglucomutase [*Lactococcus lacti*] in a standard ELISA using Peroxidase conjugated Affinity Purified anti-Goat IgG [H&L] (Rabbit) code #605-4302 and (ABTS (2,2'-azino-bis-[3-ethylbenzothiazoline-6-sulfonic acid]) code # ABTS-100 as a substrate for 30 minutes at room temperature. A working dilution of 1:3,000 to 1:15,000 of the reconstitution concentration is suggested for this product.

Assay Dilutions: All assays should be optimized by the user. Recommended dilutions (if any) may be listed below.

ELISA: 1:5,000 - 1:25,000

WB: 1:500 - 1:3,000

Formulation

Physical State: Lyophilized

Concentration: 90 mg/mL by Refractometry

Buffer: 0.02 M Potassium Phosphate, 0.15 M Sodium Chloride, pH 7.2

Preservative: 0.01% (w/v) Sodium Azide

Stabilizer: None

Reconstitution Volume: 2.0 mL

Reconstitution Buffer: Restore with deionized water (or equivalent)

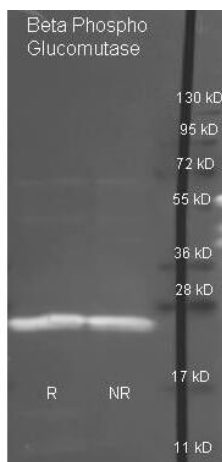
Shipping & Handling

Shipping Condition: Ambient

Storage Condition: Store vial at 4° C prior to restoration. For extended storage aliquot contents and freeze at -20° C or below. Avoid cycles of freezing and thawing. Centrifuge product if not completely clear after standing at room temperature. This product is stable for several weeks at 4° C as an undiluted liquid. Dilute only prior to immediate use.

Expiration: Expiration date is one (1) year from date of receipt.

Images



Western Blot

Rockland Goat anti antibody (200-101-237 lot 8180) was used to detect purified Beta Phospho Glucomutase under reducing (R) and non-reducing (NR) conditions. Reduced samples of protein contained 4% BME and were boiled for 5 minutes. Samples of ~1ug of protein per lane were run by SDS-PAGE. Protein was transferred to nitrocellulose and probed with 1:3000 dilution of primary antibody (ON 4 C in MB-070). Detection shown was using Dylight 488 conjugated Donkey anti goat (605-741-125 lot 21094 1:10K in TBS/MB-070 1 hr RT). Images were collected using the BioRad VersaDoc System.

Disclaimer

This product is for research use only and is not intended for therapeutic or diagnostic applications. Please contact a technical service representative for more information. All products of animal origin manufactured by Rockland Immunochemicals are derived from starting materials of North American origin. Collection was performed in United States Department of Agriculture (USDA) inspected facilities and all materials have been inspected and certified to be free of disease and suitable for exportation. All properties listed are typical characteristics and are not specifications. All suggestions and data are offered in good faith but without guarantee as conditions and methods of use of our products are beyond our control. All claims must be made within 30 days following the date of delivery. The prospective user must determine the suitability of our materials before adopting them on a commercial scale. Suggested uses of our products are not recommendations to use our products in violation of any patent or as a license under any patent of Rockland Immunochemicals, Inc. If you require a commercial license to use this material and do not have one, then return this material, unopened to: Rockland Inc., P.O. BOX 5199, Limerick, Pennsylvania, USA.