



SZABO SCANDIC

Part of Europa Biosite

Produktinformation



Forschungsprodukte & Biochemikalien



Zellkultur & Verbrauchsmaterial



Diagnostik & molekulare Diagnostik



Laborgeräte & Service

Weitere Information auf den folgenden Seiten!
See the following pages for more information!



Lieferung & Zahlungsart

siehe unsere [Liefer- und Versandbedingungen](#)

Zuschläge

- Mindermengenzuschlag
- Trockeneiszuschlag
- Gefahrgutzuschlag
- Expressversand

SZABO-SCANDIC HandelsgmbH

Quellenstraße 110, A-1100 Wien

T. +43(0)1 489 3961-0

F. +43(0)1 489 3961-7

mail@szabo-scandic.com

www.szabo-scandic.com

[linkedin.com/company/szaboscandic](https://www.linkedin.com/company/szaboscandic) 

Datasheet for 100-1177**Protein A Antibody****Overview**

Description:	Anti-Protein A (GOAT) Antibody - 100-1177
Item No.:	100-1177
Size:	2 mL
Applications:	WB
Reactivity:	Protein A
Host Species:	Goat

Product Details

Background:	Protein A is 56 kDA surface protein found in the cell wall of Staphylococcus aureus. Protein A has a high affinity to Human IgG, Mouse IgG and others and is therefore suitable for purification and detection of immunoglobulins.
Synonyms:	Goat anti-Protein A Antibody, Goat anti Protein A
Host Species:	Goat
Clonality:	Polyclonal
Format:	Antiserum

Target Details

Reactivity:	Protein A
Immunogen Type:	Native Protein
Immunogen:	Protein A [Staphylococcus aureus]
Purity/Specificity:	This product was prepared from monospecific antiserum by a delipidation and defibrination. Assay by immunoelectrophoresis resulted in a single precipitin arc against anti-goat serum, purified and partially purified Protein A [Staphylococcus aureus].

Application Details

Tested Applications:	WB
Application Note:	Anti-Protein A has been tested by western blot and is suitable for immunoblotting (western or dot blot), ELISA, immunoprecipitation and most immunological methods requiring high titer and specificity.
Assay Dilutions:	All assays should be optimized by the user. Recommended dilutions (if any) may be listed below.
ELISA:	1:20,000-1:100,000
IHC:	1:1,000-1:5,000
WB:	1:2,000-1:10,000

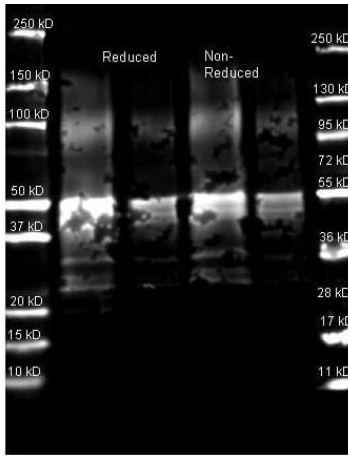
Formulation

Physical State:	Lyophilized
Concentration:	90 mg/mL by Refractometry
Buffer:	0.01 M Sodium Phosphate, 0.15 M Sodium Chloride, pH 7.2
Preservative:	0.01% (w/v) Sodium Azide
Stabilizer:	None
Reconstitution Volume:	2.0 mL
Reconstitution Buffer:	Restore with deionized water (or equivalent)

Shipping & Handling

Shipping Condition:	Ambient
Storage Condition:	Store vial at 4° C prior to restoration. For extended storage aliquot contents and freeze at -20° C or below. Avoid cycles of freezing and thawing. Centrifuge product if not completely clear after standing at room temperature. This product is stable for several weeks at 4° C as an undiluted liquid. Dilute only prior to immediate use.
Expiration:	Expiration date is one (1) year from date of receipt.

Images



Western Blot

Rockland Goat anti Protein A antibody (was used to detect Protein A under reducing and non-reducing conditions. Reduced samples of purified Protein A contained 4% BME and were boiled for 5 minutes. Samples of ~1 μ g and 0.25 μ g of protein per lane were run by SDS-PAGE. Protein was transferred to nitrocellulose and probed with Rockland Goat anti Protein A antibody (200-1177 lot 17938 1:5K in MB-0070, ON 4 C). Primary antibody was detected with Rockland Dylight 649 conjugated Donkey anti Goat 605-743-125 lot 20834 1:10K 1.5 hr RT in MB-070 and imaged on the BioRad VersaDoc imaging system.

Disclaimer

This product is for research use only and is not intended for therapeutic or diagnostic applications. Please contact a technical service representative for more information. All products of animal origin manufactured by Rockland Immunochemicals are derived from starting materials of North American origin. Collection was performed in United States Department of Agriculture (USDA) inspected facilities and all materials have been inspected and certified to be free of disease and suitable for exportation. All properties listed are typical characteristics and are not specifications. All suggestions and data are offered in good faith but without guarantee as conditions and methods of use of our products are beyond our control. All claims must be made within 30 days following the date of delivery. The prospective user must determine the suitability of our materials before adopting them on a commercial scale. Suggested uses of our products are not recommendations to use our products in violation of any patent or as a license under any patent of Rockland Immunochemicals, Inc. If you require a commercial license to use this material and do not have one, then return this material, unopened to: Rockland Inc., P.O. BOX 5199, Limerick, Pennsylvania, USA.