



# SZABO SCANDIC

Part of Europa Biosite

## Produktinformation



Forschungsprodukte & Biochemikalien



Zellkultur & Verbrauchsmaterial



Diagnostik & molekulare Diagnostik



Laborgeräte & Service

Weitere Information auf den folgenden Seiten!  
See the following pages for more information!



### Lieferung & Zahlungsart

siehe unsere [Liefer- und Versandbedingungen](#)

### Zuschläge

- Mindermengenzuschlag
- Trockeneiszuschlag
- Gefahrgutzuschlag
- Expressversand

### SZABO-SCANDIC HandelsgmbH

Quellenstraße 110, A-1100 Wien

T. +43(0)1 489 3961-0

F. +43(0)1 489 3961-7

[mail@szabo-scandic.com](mailto:mail@szabo-scandic.com)

[www.szabo-scandic.com](http://www.szabo-scandic.com)

[linkedin.com/company/szaboscandic](https://www.linkedin.com/company/szaboscandic) 

**Datasheet for 100-401-137-0100****Luciferase Antibody****Overview**

<b>Description:</b>	Anti-Luciferase (RABBIT) Antibody - 100-401-137-0100
<b>Item No.:</b>	100-401-137-0100
<b>Size:</b>	100 µL
<b>Applications:</b>	Dot Blot
<b>Reactivity:</b>	Luciferase
<b>Host Species:</b>	Rabbit

**Product Details**

<b>Background:</b>	Anti luciferase Antibody recognizes luciferase that is commonly used in biological research as a reporter to assess the transcriptional activity in cells that are transfected with a genetic construct containing the luciferase gene under the control of a promoter of interest. Luciferase can also be used to detect the level of cellular ATP in cell viability assays or for kinase activity assays. Additionally proluminescent molecules that are converted to luciferin upon activity of a particular enzyme can be used to detect enzyme activity in coupled or two-step luciferase assays. Such substrates have been used to detect caspase activity and cytochrome P450 activity, among others.
<b>Synonyms:</b>	rabbit anti-Luciferase Antibody, Alkanal monooxygenase alpha chain, Bacterial luciferase alpha chain, luxA, Alkanal monooxygenase beta chain, Bacterial luciferase beta chain, luxB
<b>Host Species:</b>	Rabbit
<b>Clonality:</b>	Polyclonal
<b>Format:</b>	Antiserum

**Target Details**

<b>Gene Name:</b>	LUXB_VIBFI, luxA
<b>Reactivity:</b>	Luciferase
<b>Immunogen Type:</b>	Native Protein
<b>Immunogen:</b>	Luciferase [Photobacterium fischerii]

**Purity/Specificity:** This product was prepared from monospecific antiserum by a delipidation and defibrination. Assay by immunoelectrophoresis resulted in a single precipitin arc against anti-rabbit serum, purified and partially purified Luciferase [*Photobacterium fischerii*]. Cross reactivity against Luciferase from other tissues and species may occur but have not been specifically determined.

**Relevant Links:**

- [UniProtKB - P19907](#)
- [NCBI - P29238.1](#)
- [GeneID - 3280269](#)

## Application Details

**Tested Applications:** Dot Blot

**Application Note:** Luciferase Antibody has been tested by dot blot and is suitable for western blotting, immunohistochemistry, immunoprecipitation, and ELISA. Researchers should determine optimal titers for applications that are not stated below.

**Assay Dilutions:** All assays should be optimized by the user. Recommended dilutions (if any) may be listed below.

**ELISA:** 1:5,000 - 1:25,000

**IHC:** 1:500 - 1:2,500

**IP:** 1:100

**WB:** 1:1,000 - 1:5,000

## Formulation

**Physical State:** Lyophilized

**Concentration:** 75 mg/ml by Refractometry

**Buffer:** 0.02 M Potassium Phosphate, 0.15 M Sodium Chloride, pH 7.2

**Preservative:** 0.01% (w/v) Sodium Azide

**Stabilizer:** None

**Reconstitution Volume:** 100  $\mu$ L

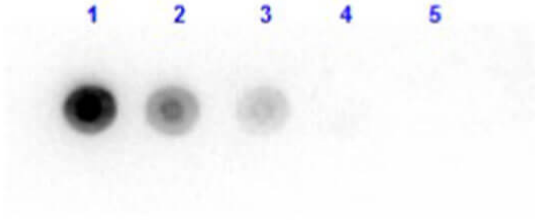
**Reconstitution Buffer:** Restore with deionized water (or equivalent)

## Shipping & Handling

**Shipping Condition:** Ambient

<b>Storage Condition:</b>	Store vial at 4° C prior to restoration. For extended storage aliquot contents and freeze at -20° C or below. Avoid cycles of freezing and thawing. Centrifuge product if not completely clear after standing at room temperature. This product is stable for several weeks at 4° C as an undiluted liquid. Dilute only prior to immediate use.
<b>Expiration:</b>	Expiration date is one (1) year from date of receipt.

## Images



### Dot Blot

Dot Blot results of Rabbit anti-Luciferase Antibody. Dots are Luciferase (*Photobacterium fischerii*) at (1) 100ng, (2) 33.3ng, (3) 11.1ng, (4) 3.70ng, (5) 1.23ng. Blocking: MB-070 for 60 min at RT. Primary Antibody: Rabbit anti-Luciferase at 1ug/mL 1hr RT. Secondary Antibody: Goat Anti-Rabbit IgG HRP 611-103-122 at 1:40,000 for 30min RT. Imaged with BioRad ChemiDoc, Chemi filter 5sec exposure.

## Disclaimer

This product is for research use only and is not intended for therapeutic or diagnostic applications. Please contact a technical service representative for more information. All products of animal origin manufactured by Rockland Immunochemicals are derived from starting materials of North American origin. Collection was performed in United States Department of Agriculture (USDA) inspected facilities and all materials have been inspected and certified to be free of disease and suitable for exportation. All properties listed are typical characteristics and are not specifications. All suggestions and data are offered in good faith but without guarantee as conditions and methods of use of our products are beyond our control. All claims must be made within 30 days following the date of delivery. The prospective user must determine the suitability of our materials before adopting them on a commercial scale. Suggested uses of our products are not recommendations to use our products in violation of any patent or as a license under any patent of Rockland Immunochemicals, Inc. If you require a commercial license to use this material and do not have one, then return this material, unopened to: Rockland Inc., P.O. BOX 5199, Limerick, Pennsylvania, USA.