



SZABO SCANDIC

Part of Europa Biosite

Produktinformation



Forschungsprodukte & Biochemikalien



Zellkultur & Verbrauchsmaterial



Diagnostik & molekulare Diagnostik



Laborgeräte & Service

Weitere Information auf den folgenden Seiten!
See the following pages for more information!



Lieferung & Zahlungsart

siehe unsere [Liefer- und Versandbedingungen](#)

Zuschläge

- Mindermengenzuschlag
- Trockeneiszuschlag
- Gefahrgutzuschlag
- Expressversand

SZABO-SCANDIC HandelsgmbH

Quellenstraße 110, A-1100 Wien

T. +43(0)1 489 3961-0

F. +43(0)1 489 3961-7

mail@szabo-scandic.com

www.szabo-scandic.com

[linkedin.com/company/szaboscandic](https://www.linkedin.com/company/szaboscandic) 

Datasheet for 100-401-140**Adenosine Deaminase Antibody****Overview**

Description:	Anti-Adenosine Deaminase (Calf Spleen) (RABBIT) - 100-401-140
Item No.:	100-401-140
Size:	2 mL
Applications:	WB
Reactivity:	Human, Mouse, Bovine Calf Spleen
Host Species:	Rabbit

Product Details

Background: Adenosine Deaminase catalyzes the hydrolytic deamination of adenosine and 2-deoxyadenosine. It plays an important role in purine metabolism and in adenosine homeostasis. Adenosine Deaminase modulates signaling by extracellular adenosine, therefore contributes indirectly to cellular signaling events. It acts as a positive regulator of T-cell coactivation, by binding DPP4. Its interaction with DPP4 regulates lymphocyte-epithelial cell adhesion. Adenosine Deaminase enhances dendritic cell immunogenicity by affecting dendritic cell costimulatory molecule expression and cytokines and chemokines secretion. It enhances CD4+ T-cell differentiation and proliferation. And acts as a positive modulator of adenosine receptors ADORA1 and ADORA2A, by enhancing their ligand affinity via conformational change. It stimulates plasminogen activation. It also plays a role in male fertility and a protective role in early post implantation embryonic development.

Synonyms:	rabbit anti-Adenosine Deaminase Antibody, Adenosine deaminase, Adenosine aminohydrolase
Host Species:	Rabbit
Clonality:	Polyclonal
Format:	Antiserum

Target Details

Gene Name:	ADA
Reactivity:	Human, Mouse, Bovine Calf Spleen
Immunogen Type:	Native Protein

Immunogen:	Adenosine Deaminase [Calf Spleen]
Purity/Specificity:	This product was prepared from monospecific antiserum by a delipidation and defibrination. Assay by immunoelectrophoresis resulted in a single precipitin arc against anti-rabbit serum, purified and partially purified Adenosine Deaminase [Calf Spleen]. Cross reactivity against Adenosine Deaminase from other tissues and species may occur but have not been specifically determined.
Relevant Links:	<ul style="list-style-type: none">• UniProtKB - P56658• NCBI - NP_776312.1• GenelD - 280712

Application Details

Tested Applications:	WB
Application Note:	Anti-Adenosine Deaminase has been tested by western blot and is suitable for use in ELISA, western blot, and immunoprecipitation. Specific conditions for reactivity should be optimized by the end user.
Assay Dilutions:	All assays should be optimized by the user. Recommended dilutions (if any) may be listed below.
ELISA:	1:5,000 - 1:10,000
IP:	1:100
WB:	1:500 - 1:2,000

Formulation

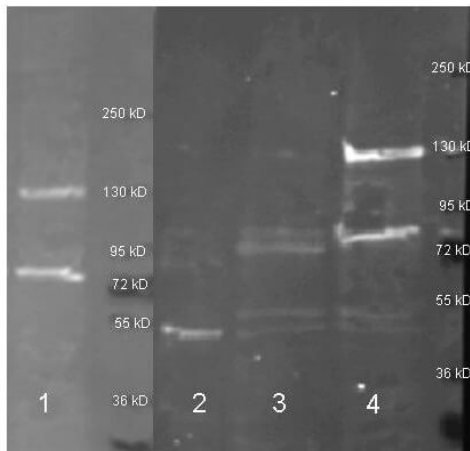
Physical State:	Lyophilized
Concentration:	90 mg/mL by Refractometry
Buffer:	0.02 M Potassium Phosphate, 0.15 M Sodium Chloride, pH 7.2
Preservative:	0.01% (w/v) Sodium Azide
Stabilizer:	None
Reconstitution Volume:	2.0 mL
Reconstitution Buffer:	Restore with deionized water (or equivalent)

Shipping & Handling

Shipping Condition:	Ambient
----------------------------	---------

Storage Condition:	Store vial at 4° C prior to restoration. For extended storage aliquot contents and freeze at -20° C or below. Avoid cycles of freezing and thawing. Centrifuge product if not completely clear after standing at room temperature. This product is stable for several weeks at 4° C as an undiluted liquid. Dilute only prior to immediate use.
Expiration:	Expiration date is one (1) year from date of receipt.

Images



Western Blot

Rockland Anti-adenosine deaminase biotin conjugated (200-406-140) was used to detect adenosine deaminase. Lane 1: mouse pancreas lysate detect purified. Lane 2: Jurkat and Raji lysate (1:1 mixture) detect purified. Lane 3: Jurkat and Raji lysate (1:1 mixture) detect endogenous. Lane 4: Mouse Pancreas and Liver lysate (1:1 mixture). Load: 30µL. Blocked with 3% Fish Gel (left) or 3% BSA (right). Primary Antibody: Anti-Adenosine Deaminase biotin conjugated (p/n 200-406-140) lot 5628 (1:5K in TBS, Overnight at 4°C). Secondary Antibody: Dylight 488 conjugated Streptavidin (p/n S000-41 lot 20833 1:5K in MB-070 for 30 minutes). Blot was imaged with the Biorad VersaDoc imaging system.

Disclaimer

This product is for research use only and is not intended for therapeutic or diagnostic applications. Please contact a technical service representative for more information. All products of animal origin manufactured by Rockland Immunochemicals are derived from starting materials of North American origin. Collection was performed in United States Department of Agriculture (USDA) inspected facilities and all materials have been inspected and certified to be free of disease and suitable for exportation. All properties listed are typical characteristics and are not specifications. All suggestions and data are offered in good faith but without guarantee as conditions and methods of use of our products are beyond our control. All claims must be made within 30 days following the date of delivery. The prospective user must determine the suitability of our materials before adopting them on a commercial scale. Suggested uses of our products are not recommendations to use our products in violation of any patent or as a license under any patent of Rockland Immunochemicals, Inc. If you require a commercial license to use this material and do not have one, then return this material, unopened to: Rockland Inc., P.O. BOX 5199, Limerick, Pennsylvania, USA.