



SZABO SCANDIC

Part of Europa Biosite

Produktinformation



Forschungsprodukte & Biochemikalien



Zellkultur & Verbrauchsmaterial



Diagnostik & molekulare Diagnostik



Laborgeräte & Service

Weitere Information auf den folgenden Seiten!
See the following pages for more information!



Lieferung & Zahlungsart

siehe unsere [Liefer- und Versandbedingungen](#)

Zuschläge

- Mindermengenzuschlag
- Trockeneiszuschlag
- Gefahrgutzuschlag
- Expressversand

SZABO-SCANDIC HandelsgmbH

Quellenstraße 110, A-1100 Wien

T. +43(0)1 489 3961-0

F. +43(0)1 489 3961-7

mail@szabo-scandic.com

www.szabo-scandic.com

[linkedin.com/company/szaboscandic](https://www.linkedin.com/company/szaboscandic) 

Datasheet for 100-401-151**Cyclin A Antibody****Overview**

Description:	Anti-Cyclin A (RABBIT) Antibody - 100-401-151
Item No.:	100-401-151
Size:	100 µL
Applications:	IHC, WB
Reactivity:	Human
Host Species:	Rabbit

Product Details

Background:	Anti-Cyclin A detects Cyclin A. Cyclin A is a member of the cyclin family. Cyclin A binds to S phase Cdk2 and is required for the cell to progress through the S phase. Cyclin A/ Cdk2 is inhibited by the complex p21CIP. Anti-Cyclin A Antibody is ideal for investigators involved in Cell Signaling, cell biology and Signal Transduction research.
Synonyms:	rabbit anti-Cyclin A antibody, CCN1 antibody, CCNA antibody, CCNA2 antibody, Cyclin A2 antibody
Host Species:	Rabbit
Clonality:	Polyclonal
Format:	Antiserum

Target Details

Gene Name:	CCNA2
Reactivity:	Human
Immunogen Type:	Conjugated Peptide
Immunogen:	Anti-Cyclin-A Antibody was produced by repeated immunizations with a recombinant protein corresponding to the human cyclin A.

Purity/Specificity: Anti-Cyclin A was prepared from monospecific antiserum by delipidation and defibrination. Antiserum will specifically react with a 60 kDa Cyclin A protein from human, rat and mouse tissue. No reaction was observed against other related cyclins. Cross reactivity with Cyclin A from other species may also occur.

Relevant Links:

- [UniProtKB - P20248](#)
- [NCBI - NP_001228.1](#)
- [GeneID - 890](#)

Application Details

Tested Applications: IHC, WB

Application Note: Anti-Cyclin-A antibody has been tested by western blot and immunohistochemistry and is suitable for the detection by immunoblot, ELISA, IHC, and IP of human, rat and mouse Cyclin A. Researchers should determine optimal titers for applications that are not stated below.

Assay Dilutions: All assays should be optimized by the user. Recommended dilutions (if any) may be listed below.

ELISA: 1:5,000 - 1:20,000

IHC: 1:100

IP: 1:100

WB: 1:500 - 1:5,000

Formulation

Physical State: Liquid (sterile filtered)

Concentration: 80 mg/mL by Refractometry

Buffer: None

Preservative: 0.01% (w/v) Sodium Azide

Stabilizer: None

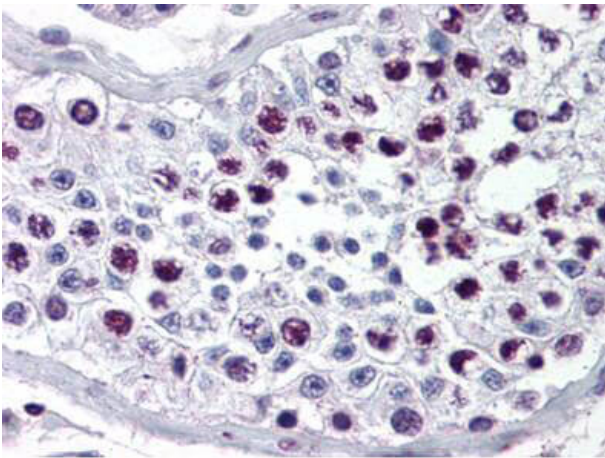
Shipping & Handling

Shipping Condition: Dry Ice

Storage Condition: Store vial at -20° C prior to opening. Aliquot contents and freeze at -20° C or below for extended storage. Avoid cycles of freezing and thawing. Centrifuge product if not completely clear after standing at room temperature. This product is stable for several weeks at 4° C as an undiluted liquid. Dilute only prior to immediate use.

Expiration: Expiration date is one (1) year from date of receipt.

Images

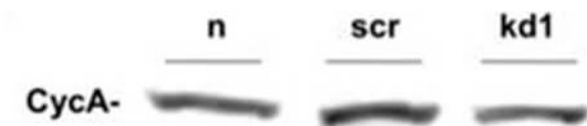


Immunohistochemistry

Immunohistochemistry of Rabbit Anti-Cyclin A antibody.
Tissue: human testes tissue. Fixation: formalin fixed paraffin embedded. Antigen retrieval: not required.
Primary antibody: Cyclin A antibody at 1:500 for 1 h at RT.
Secondary antibody: Peroxidase rabbit secondary antibody at 1:10,000 for 45 min at RT. Localization: Cyclin A is nuclear and cytoplasmic. Staining: Cyclin A as precipitated red signal with hematoxylin purple nuclear counterstain.

Western Blot

Western Blot of Rabbit anti-Cyclin A antibody shows no difference detected between cell lines. Lane 1: T98G cells treated with normal (n). Lane 2: T98G cells treated with scrambled (scr). Lane 3: T98G cells treated with PIN1 knockdown (kd1). Load: 25 µg per lane. Primary antibody: Cyclin A antibody at 1:400 for overnight at 4°C. Secondary antibody: IRDye800™ rabbit secondary antibody at 1:10,000 for 45 min at RT. Block: 5% BLOTTO overnight at 4°C. Predicted/Observed size: 60kDa for Cyclin A.



References

- Rizzolio F et al. Retinoblastoma tumor-suppressor protein phosphorylation and inactivation depend on direct interaction with Pin1. *Cell Death Differ.* (2012)

Disclaimer

This product is for research use only and is not intended for therapeutic or diagnostic applications. Please contact a technical service representative for more information. All products of animal origin manufactured by Rockland Immunochemicals are derived from starting materials of North American origin. Collection was performed in United States Department of Agriculture (USDA) inspected facilities and all materials have been inspected and certified to be free of disease and suitable for exportation. All properties listed are typical characteristics and are not specifications. All suggestions and data are offered in good faith but without guarantee as conditions and methods of use of our products are beyond our control. All claims must be made within 30 days following the date of delivery. The prospective user must determine the suitability of our materials before adopting them on a commercial scale. Suggested uses of our products are not recommendations to use our products in violation of any patent or as a license under any patent of Rockland Immunochemicals, Inc. If you require a commercial license to use this material and do not have one, then return this material, unopened to: Rockland Inc., P.O. BOX 5199, Limerick, Pennsylvania, USA.