



SZABO SCANDIC

Part of Europa Biosite

Produktinformation



Forschungsprodukte & Biochemikalien



Zellkultur & Verbrauchsmaterial



Diagnostik & molekulare Diagnostik



Laborgeräte & Service

Weitere Information auf den folgenden Seiten!
See the following pages for more information!



Lieferung & Zahlungsart

siehe unsere [Liefer- und Versandbedingungen](#)

Zuschläge

- Mindermengenzuschlag
- Trockeneiszuschlag
- Gefahrgutzuschlag
- Expressversand

SZABO-SCANDIC HandelsgmbH

Quellenstraße 110, A-1100 Wien

T. +43(0)1 489 3961-0

F. +43(0)1 489 3961-7

mail@szabo-scandic.com

www.szabo-scandic.com

[linkedin.com/company/szaboscandic](https://www.linkedin.com/company/szaboscandic) 

Datasheet for 100-401-160**CDC2 p34 Antibody****Overview**

Description:	Anti-CDC2 (p34) (RABBIT) Antibody - 100-401-160
Item No.:	100-401-160
Size:	100 µL
Applications:	ELISA, WB
Reactivity:	Human
Host Species:	Rabbit

Product Details

Background:	p34 cdc2 is a serine-threonine protein kinase of 34,000 daltons that complexes with cyclin to form maturation promoting factor (MPF). The inactive form of the protein is phosphorylated at threonine (T) and tyrosine (Y) residues. In humans the phosphorylation appears to be performed by p60src. The active form of the protein is dephosphorylated and it functions by phosphorylating a number of proteins. The phosphorylation activity is coupled to the entry into the M-phase of the cell. p34 cdc2 protein must be associated with a normal cyclin protein for the M-phase to be completed normally. Association with deletion mutants of cyclin halts the M-phase before it is completed.
Synonyms:	rabbit anti-Cdc2 antibody, rabbit anti-p34 antibody, Cell Division Cycle 2 Protein antibody, Cyclin Dependent Kinase 1 antibody, p34 Cdk1 antibody, p34 protein kinase antibody, Cyclin-dependent kinase 1, CDK1, Cell division control protein 2 homolog, Cell division protein kinase 1, p34 protein kinase, CDK1, CDC2, CDC28A, CDKN1, P34CDC2
Host Species:	Rabbit
Clonality:	Polyclonal
Format:	Antiserum

Target Details

Gene Name:	CDK1
Reactivity:	Human

Immunogen Type:	Conjugated Peptide
Immunogen:	CDC2 peptide corresponding to the C-terminus of the human protein conjugated to Keyhole Limpet Hemocyanin (KLH).
Purity/Specificity:	This product was prepared from monospecific antiserum by delipidation and defibrination. Antiserum will specifically react with a 34 kDa cdc2 protein from human, rat and mouse tissue. No reaction was observed against other related cyclin dependent kinases. Cross reactivity with cdc2 from other species may also occur.
Relevant Links:	<ul style="list-style-type: none">• NCBI - NP_001307847.1• UniProtKB - P06493• GeneID - 983

Application Details

Tested Applications:	ELISA, WB
Application Note:	Anti-p34 cdc2 antibody has been tested in ELISA and western blot and is suitable for immunoblotting, immunohistochemistry immunoprecipitation (as active kinase), and immunoblotting. HeLa cell lysate or human colon carcinoma is suggested as a positive control for immunoblotting. LEP fibroblast cell lysate is suggested as a negative control. This product is suitable for the detection by immunoblot of human, rat and mouse cdc2. For immunohistochemistry use paraffin embedded tissue.
Assay Dilutions:	All assays should be optimized by the user. Recommended dilutions (if any) may be listed below.
ELISA:	1:60,000
IHC:	1:200 - 1:1,000
IP:	1:100
WB:	1:250 - 1:5,000

Formulation

Physical State:	Liquid (sterile filtered)
Concentration:	85 mg/mL by Refractometry
Buffer:	None
Preservative:	0.01% (w/v) Sodium Azide
Stabilizer:	None

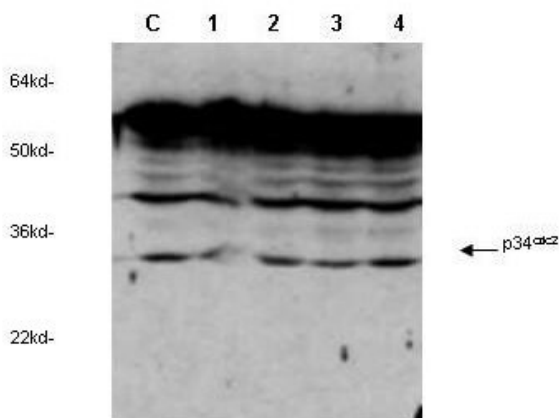
Shipping & Handling

Shipping Condition: Dry Ice

Storage Condition: Store vial at -20° C prior to opening. Aliquot contents and freeze at -20° C or below for extended storage. Avoid cycles of freezing and thawing. Centrifuge product if not completely clear after standing at room temperature. This product is stable for several weeks at 4° C as an undiluted liquid. Dilute only prior to immediate use.

Expiration: Expiration date is one (1) year from date of receipt.

Images



Western Blot

Rockland's anti-cdc2 Cyclin Dependent Kinase was used to detect human p34cdc2 by western blot in untreated (Control) and drug treated lysates of MCF-7 cells. Lane 1-4 represents 3.1µM, 6.2µM, 12.5µM and 25.0µM genistein treatment of cells before lysates were prepared. Detection occurs using a 1:1,000 dilution. Although this antiserum detects non-specific bands at higher MW, a clear induction of signal is observed as the concentration of drug is increased. Personnel Communication, Xiao He Yang, University of Oklahoma Health Sciences Center.

Disclaimer

This product is for research use only and is not intended for therapeutic or diagnostic applications. Please contact a technical service representative for more information. All products of animal origin manufactured by Rockland Immunochemicals are derived from starting materials of North American origin. Collection was performed in United States Department of Agriculture (USDA) inspected facilities and all materials have been inspected and certified to be free of disease and suitable for exportation. All properties listed are typical characteristics and are not specifications. All suggestions and data are offered in good faith but without guarantee as conditions and methods of use of our products are beyond our control. All claims must be made within 30 days following the date of delivery. The prospective user must determine the suitability of our materials before adopting them on a commercial scale. Suggested uses of our products are not recommendations to use our products in violation of any patent or as a license under any patent of Rockland Immunochemicals, Inc. If you require a commercial license to use this material and do not have one, then return this material, unopened to: Rockland Inc., P.O. BOX 5199, Limerick, Pennsylvania, USA.