



SZABO SCANDIC

Part of Europa Biosite

Produktinformation



Forschungsprodukte & Biochemikalien



Zellkultur & Verbrauchsmaterial



Diagnostik & molekulare Diagnostik



Laborgeräte & Service

Weitere Information auf den folgenden Seiten!
See the following pages for more information!



Lieferung & Zahlungsart

siehe unsere [Liefer- und Versandbedingungen](#)

Zuschläge

- Mindermengenzuschlag
- Trockeneiszuschlag
- Gefahrgutzuschlag
- Expressversand

SZABO-SCANDIC HandelsgmbH

Quellenstraße 110, A-1100 Wien

T. +43(0)1 489 3961-0

F. +43(0)1 489 3961-7

mail@szabo-scandic.com

www.szabo-scandic.com

[linkedin.com/company/szaboscandic](https://www.linkedin.com/company/szaboscandic) 

Datasheet for 100-401-163**CDK5 Antibody****Overview**

Description:	Anti-CDK5 (RABBIT) Antibody - 100-401-163
Item No.:	100-401-163
Size:	100 µL
Applications:	IHC, WB
Reactivity:	Human, Mouse, Rat
Host Species:	Rabbit

Product Details

Background:	The protein encoded by the gene CDK5 is involved in the control of the cell cycle and interacts with D1 and D3-type G1 cyclins. CDK5 belongs to the protein kinase superfamily, the CMGC Ser/Thr protein kinase family and the CDC2/CDKX subfamily. CDK5 phosphorylates histone H1, tau, MAP2 and NF-H and NF-M and also interacts with p35 which activates the kinase. CDK5 forms a heterodimer, where CDK5 is the catalytic subunit and p35 is the regulatory subunit. CDK5 is also found in a trimolecular complex with CABLES1 and ABL1. CDK5 is a cytoplasmic protein.
Synonyms:	rabbit anti-Cdk5 antibody, Cell division protein kinase 5 antibody, Crk6 antibody, rabbit anti-Cyclin dependent kinase 5 antibody, Protein kinase CDK5 splicing antibody, PSSALRE antibody, Serine threonine protein kinase PSSALRE antibody, TPKII catalytic subunit, Tau protein kinase II catalytic subunit, CDKN5
Host Species:	Rabbit
Clonality:	Polyclonal
Format:	Antiserum

Target Details

Gene Name:	CDK5
Reactivity:	Human, Mouse, Rat
Immunogen Type:	Conjugated Peptide

Immunogen:	CDK5 (p31) peptide corresponding to the C-terminus of the human protein conjugated to Keyhole Limpet Hemocyanin (KLH).
Purity/Specificity:	Anti-cdk5 was prepared from monospecific antiserum by delipidation and defibrination. Antiserum will specifically react with a 35 kDa cdk5 (p31) protein from human, rat and mouse tissue. No reaction was observed against other related cyclin dependent kinases. Cross reactivity with cdk5 (p31) from other species may also occur.
Relevant Links:	<ul style="list-style-type: none">• NCBI - NP_001157882.1• UniProtKB - Q00535• GeneID - 1020

Application Details

Tested Applications:	IHC, WB
Application Note:	CDK5 antibody was tested by immunohistochemistry and immunoblot and found to be reactive against cdk5 (p31) at a dilution of 1:500 followed by reaction with Peroxidase conjugated Affinity Purified anti-Rabbit IgG [H&L] (Goat) code #611-1302. Anti-cdk5 (p31) is suitable for the detection by immunoblot of human, rat and mouse cdk5 (p31). Suggested dilutions for ELISA are 1:500 to 1:2000.
Assay Dilutions:	All assays should be optimized by the user. Recommended dilutions (if any) may be listed below.
ELISA:	1:5,000 - 1:20,000
IHC:	1:500
IP:	1:100
WB:	1:500 - 1:5,000

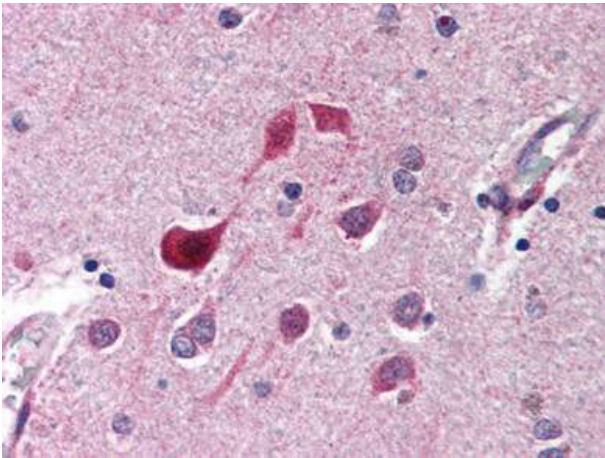
Formulation

Physical State:	Liquid (sterile filtered)
Concentration:	85 mg/mL by Refractometry
Buffer:	None
Preservative:	0.01% (w/v) Sodium Azide
Stabilizer:	None

Shipping & Handling

Shipping Condition:	Dry Ice
Storage Condition:	Store vial at -20° C prior to opening. Aliquot contents and freeze at -20° C or below for extended storage. Avoid cycles of freezing and thawing. Centrifuge product if not completely clear after standing at room temperature. This product is stable for several weeks at 4° C as an undiluted liquid. Dilute only prior to immediate use.
Expiration:	Expiration date is one (1) year from date of receipt.

Images



Immunohistochemistry

Rockland's anti-CDK5 antibody was diluted 1:500 to detect CDK5 in human brain cortex tissue. Tissue was formalin fixed and paraffin embedded. No pre-treatment of sample was required. The image shows the localization of antibody as the precipitated red signal, with a hematoxylin purple nuclear counter stain.

Disclaimer

This product is for research use only and is not intended for therapeutic or diagnostic applications. Please contact a technical service representative for more information. All products of animal origin manufactured by Rockland Immunochemicals are derived from starting materials of North American origin. Collection was performed in United States Department of Agriculture (USDA) inspected facilities and all materials have been inspected and certified to be free of disease and suitable for exportation. All properties listed are typical characteristics and are not specifications. All suggestions and data are offered in good faith but without guarantee as conditions and methods of use of our products are beyond our control. All claims must be made within 30 days following the date of delivery. The prospective user must determine the suitability of our materials before adopting them on a commercial scale. Suggested uses of our products are not recommendations to use our products in violation of any patent or as a license under any patent of Rockland Immunochemicals, Inc. If you require a commercial license to use this material and do not have one, then return this material, unopened to: Rockland Inc., P.O. BOX 5199, Limerick, Pennsylvania, USA.