



# SZABO SCANDIC

Part of Europa Biosite

## Produktinformation



Forschungsprodukte & Biochemikalien



Zellkultur & Verbrauchsmaterial



Diagnostik & molekulare Diagnostik



Laborgeräte & Service

Weitere Information auf den folgenden Seiten!  
See the following pages for more information!



### Lieferung & Zahlungsart

siehe unsere [Liefer- und Versandbedingungen](#)

### Zuschläge

- Mindermengenzuschlag
- Trockeneiszuschlag
- Gefahrgutzuschlag
- Expressversand

### SZABO-SCANDIC HandelsgmbH

Quellenstraße 110, A-1100 Wien

T. +43(0)1 489 3961-0

F. +43(0)1 489 3961-7

[mail@szabo-scandic.com](mailto:mail@szabo-scandic.com)

[www.szabo-scandic.com](http://www.szabo-scandic.com)

[linkedin.com/company/szaboscandic](https://www.linkedin.com/company/szaboscandic) 

**Datasheet for 100-401-220****IKK beta Antibody****Overview**

<b>Description:</b>	Anti-IKK $\beta$ (RABBIT) Antibody - 100-401-220
<b>Item No.:</b>	100-401-220
<b>Size:</b>	100 $\mu$ L
<b>Applications:</b>	IHC, WB
<b>Reactivity:</b>	Human, Mouse, Rat
<b>Host Species:</b>	Rabbit

**Product Details**

<b>Background:</b>	NF $\kappa$ B comprises a family of cellular transcription factors that are involved in the inducible expression of a variety of cellular genes that regulate the inflammatory response and control of cell death. In the cytoplasm NF $\kappa$ B is negatively modulated by the inhibitory proteins I $\kappa$ B. In turn I $\kappa$ B is phosphorylated by a cellular kinase complex called IKK. IKK is a heterodimer composed of two kinases: IKK-a and IKK-b that phosphorylate I $\kappa$ B leading to its degradation and the resulting translocation of NF $\kappa$ B to the nucleus. IKK kinase activity is modulated negatively by pharmaceutical agents such as aspirin and positively by various cellular components such as TNF- $\alpha$ , endotoxins and overexpression of cellular kinases like MEKK1. Aspirin appears to have its effect by inhibiting the binding of ATP to IKK.
<b>Synonyms:</b>	rabbit anti-IKK beta antibody, Inhibitor of nuclear factor kappa-B kinase subunit beta, I-kappa-B-kinase beta, I $\kappa$ BKB, IKK-beta, IKK-B, I-kappa-B kinase 2, IKK2, Nuclear factor NF-kappa-B inhibitor kinase beta, NFKBKB
<b>Host Species:</b>	Rabbit
<b>Clonality:</b>	Polyclonal
<b>Format:</b>	Antiserum

**Target Details**

<b>Gene Name:</b>	IKBKB
<b>Reactivity:</b>	Human, Mouse, Rat
<b>Immunogen Type:</b>	Conjugated Peptide

<b>Immunogen:</b>	IKKb peptide corresponding to the highly conserved C-terminus region of the human protein conjugated to Keyhole Limpet Hemocyanin (KLH).
<b>Purity/Specificity:</b>	This product was prepared from monospecific antiserum by delipidation and defibrination. Anti-IKKb may react non-specifically with other proteins. Control peptide (code #100-401-220p) will compete only with the specific reaction of antiserum with the IKKb subunit.
<b>Relevant Links:</b>	<ul style="list-style-type: none"><li>• <a href="#">UniProtKB - O14920</a></li><li>• <a href="#">NCBI - O14920.1</a></li><li>• <a href="#">GeneID - 3551</a></li></ul>

## Application Details

<b>Tested Applications:</b>	IHC, WB
<b>Application Note:</b>	This product was tested by immunoblot and found to be reactive against IKK-b at a dilution of 1:1000 followed by reaction with Peroxidase conjugated Affinity Purified anti-Rabbit IgG [H&L] (Goat) code #611-1302. Anti-IKKb is suitable for the detection by immunoblot of human, mouse and rat IKKb showing an 87 kDa band. Anti-IKKb has been tested in IHC using human placenta tissue.
<b>Assay Dilutions:</b>	All assays should be optimized by the user. Recommended dilutions (if any) may be listed below.
<b>ELISA:</b>	1:1,000 - 1:5,000
<b>IHC:</b>	1:200 - 1:1,000
<b>WB:</b>	1:200 - 1:1,000

## Formulation

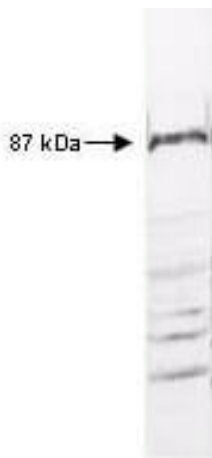
<b>Physical State:</b>	Liquid (sterile filtered)
<b>Concentration:</b>	80 mg/mL by Refractometry
<b>Buffer:</b>	None
<b>Preservative:</b>	0.01% (w/v) Sodium Azide
<b>Stabilizer:</b>	None

## Shipping & Handling

<b>Shipping Condition:</b>	Dry Ice
----------------------------	---------

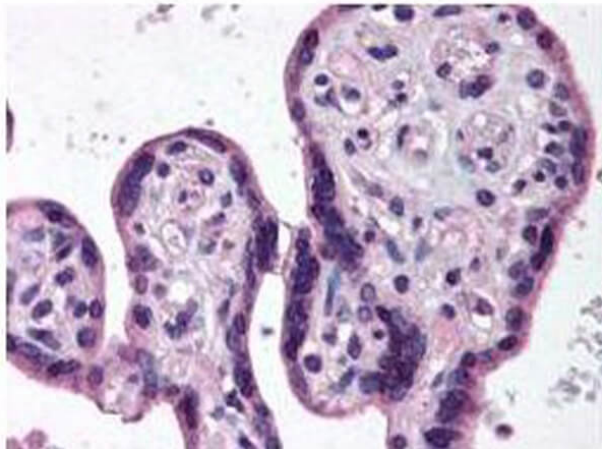
<b>Storage Condition:</b>	Store vial at -20° C prior to opening. Aliquot contents and freeze at -20° C or below for extended storage. Avoid cycles of freezing and thawing. Centrifuge product if not completely clear after standing at room temperature. This product is stable for several weeks at 4° C as an undiluted liquid. Dilute only prior to immediate use.
<b>Expiration:</b>	Expiration date is one (1) year from date of receipt.

## Images



### Western Blot

Western blot of anti-IKK $\beta$  antibody reacted with HeLa cell extract. All incubations except color development were performed using TBS supplemented with 0.1% Tween-20 at room temperature. The membrane was blocked in 5% dry milk for 2 h. After washing, a 1:500 dilution of the primary antibody was added to the membrane and incubated for 2 h. Washes with buffer were performed 4 times for 5' each. The western blot was incubated with secondary antibody (HRP Goat-a-Rabbit IgG [H&L]) diluted 1:2,000 for 1h. Washes with TBS preceded color development.



### Immunohistochemistry

Immunohistochemistry of Anti-IKK $\beta$  antibody. Tissue: human placenta was formalin fixed and paraffin embedded. No pre-treatment of sample was required. Primary Antibody: Anti-IKK $\beta$  was diluted 1:500 to detect IKK $\beta$  in tissue. The image shows the localization of antibody as the precipitated red signal, with a hematoxylin purple nuclear counter stain.

## Disclaimer

This product is for research use only and is not intended for therapeutic or diagnostic applications. Please contact a technical service representative for more information. All products of animal origin manufactured by Rockland Immunochemicals are derived from starting materials of North American origin. Collection was performed in United States Department of Agriculture (USDA) inspected facilities and all materials have been inspected and certified to be free of disease and suitable for exportation. All properties listed are typical characteristics and are not specifications. All suggestions and data are offered in good faith but without guarantee as conditions and methods of use of our products are beyond our control. All claims must be made within 30 days following the date of delivery. The prospective user must determine the suitability of our materials before adopting them on a commercial scale. Suggested uses of our products are not recommendations to use our products in violation of any patent or as a license under any patent of Rockland Immunochemicals, Inc. If you require a commercial license to use this material and do not have one, then return this material, unopened to: Rockland Inc., P.O. BOX 5199, Limerick, Pennsylvania, USA.