



# SZABO SCANDIC

Part of Europa Biosite

## Produktinformation



Forschungsprodukte & Biochemikalien



Zellkultur & Verbrauchsmaterial



Diagnostik & molekulare Diagnostik



Laborgeräte & Service

Weitere Information auf den folgenden Seiten!  
See the following pages for more information!



### Lieferung & Zahlungsart

siehe unsere [Liefer- und Versandbedingungen](#)

### Zuschläge

- Mindermengenzuschlag
- Trockeneiszuschlag
- Gefahrgutzuschlag
- Expressversand

### SZABO-SCANDIC HandelsgmbH

Quellenstraße 110, A-1100 Wien

T. +43(0)1 489 3961-0

F. +43(0)1 489 3961-7

[mail@szabo-scandic.com](mailto:mail@szabo-scandic.com)

[www.szabo-scandic.com](http://www.szabo-scandic.com)

[linkedin.com/company/szaboscandic](https://www.linkedin.com/company/szaboscandic) 

**Datasheet for 100-401-223****Gli1 Antibody****Overview**

<b>Description:</b>	Anti-Gli1 (RABBIT) Antibody - 100-401-223
<b>Item No.:</b>	100-401-223
<b>Size:</b>	100 µL
<b>Applications:</b>	ELISA, IF, WB, CHIP, IHC, IP
<b>Reactivity:</b>	Human, Mouse
<b>Host Species:</b>	Rabbit

**Product Details**

**Background:** Anti Gli1 Antibody was produced against a peptide corresponding to the carboxy-terminal region of the mouse Gli-1 protein. This region of Gli1 is not conserved among other gli family members, namely Gli-2 and Gli-3. Gli was termed by Kinzler et al. (1987) as 'glioma-associated oncogene' amplified in malignant gliomas. Analysis of the cloned gene demonstrates that the gene contains 5 repeats of zinc-finger sequences, which places Gli in the family of Kruppel (Kr) zinc finger proteins. Northern analysis reveals that Gli is expressed in embryonal carcinoma cells but not in most adult tissue. Gli has been localized to 12q13-q14.3 by Southern blot analysis. In mice, the gene is located on chromosome 10. In mice, three zinc finger transcription factors, Gli-1, Gli-2 and Gli-3, have been implicated in the transduction of Sonic hedgehog (Shh) signal. In papillary epithelium, shh, gli1 and ptc all follow similar expression patterns. Gli-1 expression is central and probably sufficient for tumor development in humans.

**Synonyms:** rabbit anti-Gli-1 Antibody, rabbit anti-Gli1 Antibody, Zinc finger protein GLI1 antibody, Glioma-associated oncogene antibody, Oncogene GLI antibody

**Host Species:** Rabbit

**Clonality:** Polyclonal

**Format:** Antiserum

**Target Details**

**Gene Name:** Gli1

**Reactivity:** Human, Mouse

<b>Immunogen Type:</b>	Conjugated Peptide
<b>Immunogen:</b>	The whole rabbit serum was prepared by repeated immunizations with a synthetic peptide corresponding to amino acids 805-820 of mouse Gli-1. The peptide was synthesized as a multiple antigen peptide (MAP).
<b>Purity/Specificity:</b>	This whole rabbit antiserum was prepared by delipidation and defibrination followed by the addition of buffer salts and preservative. Reactivity is observed against Mouse and Human Gli-1. Cross-reactivity with other species is likely but has not been determined. No reaction occurs with human or mouse Gli-2 or Gli-3.
<b>Relevant Links:</b>	<ul style="list-style-type: none"><li>• <a href="#">UniProtKB - P47806</a></li><li>• <a href="#">NCBI - 4885279</a></li><li>• <a href="#">GenelD - 2735</a></li><li>• <a href="#">GenelD - 14632</a></li></ul>

## Application Details

<b>Tested Applications:</b>	ELISA, IF, WB
<b>Suggested Applications:</b>	ChIP, IHC, IP (Based on references)
<b>Application Note:</b>	This antibody has been tested for use in ELISA, immunofluorescence, and western blot. Specific conditions for reactivity should be optimized by the end user. Expect a band approximately 120 kDa in size corresponding to Gli-1 protein by western blotting in the appropriate cell lysate or extract. For immunohistochemistry, perform heat mediated antigen retrieval via the microwave method before commencing with staining.
<b>Assay Dilutions:</b>	All assays should be optimized by the user. Recommended dilutions (if any) may be listed below.
<b>ELISA:</b>	1:20,000 - 1:100,000
<b>IF:</b>	1:500 - 1:2,000
<b>IHC:</b>	1:500 - 1:2,000
<b>WB:</b>	1:2,000 - 1:10,000

## Formulation

<b>Physical State:</b>	Liquid (sterile filtered)
<b>Concentration:</b>	75 mg/mL by Refractometry
<b>Buffer:</b>	0.02 M Potassium Phosphate, 0.15 M Sodium Chloride, pH 7.2
<b>Preservative:</b>	0.01% (w/v) Sodium Azide

**Stabilizer:** None

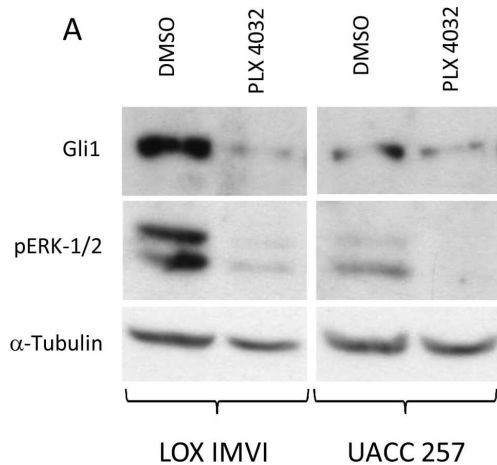
## Shipping & Handling

**Shipping Condition:** Dry Ice

**Storage Condition:** Store vial at -20° C prior to opening. Aliquot contents and freeze at -20° C or below for extended storage. Avoid cycles of freezing and thawing. Centrifuge product if not completely clear after standing at room temperature. This product is stable for several weeks at 4° C as an undiluted liquid. Dilute only prior to immediate use.

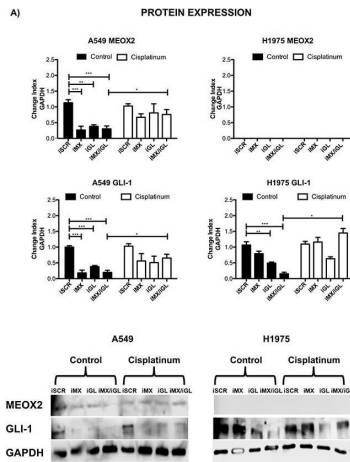
**Expiration:** Expiration date is one (1) year from date of receipt.

## Images



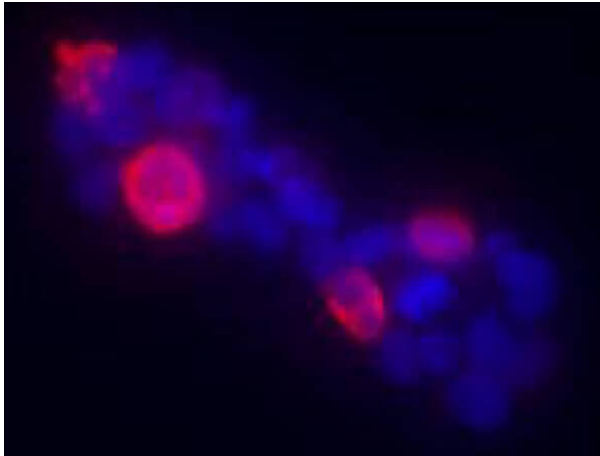
### Western Blot

Inhibition of BRAFV600E, expression of GLI1 and SHH-GLI pathway inhibition by NVP-LDE225 in human melanoma cells in vitro. A) LOX IMVI and UACC 257 with PLX-4032 at the dose of 1 μM for 24 hr. subsequently protein lysates prepared and subjected to WB analysis for the expression of GLI1 and phospho-ERK1/2. B) Effect of NVP-LDE225 on PTCH1 promoter. In total, 1 μg of PTCH1 pGL3b-hPTCH1-prom-wt or pGL3b-hPTCH1-prom-mut luciferase construct and reporter were cotransfected into LOX IMVI cells. Cells were subsequently treated with 10 μM of NVP-LDE225 or cyclopamine for 4 hours (time point selected base on kinetic experiments). Fold activation was calculated relative to cells transfected with 3 μg of pB-actin-RL. One representative experiment of 2 is shown. Figure provided by CiteAb. Source: PLoS One, PMID: 23935925.



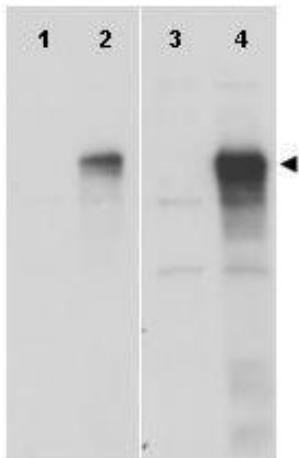
### Western Blot

Inducible MEOX2-GLI1 axis expression was involved in cellular migration and cellular proliferation in lung cancer cells(A) A549 and H1975 lung cancer cells demonstrated an inducible GLI-1 protein expression pattern following treatment with 8  $\mu$ M cisplatin and reduced GLI-1 inducible expression following the application of specific anti-MEOX2 siRNA and/or anti-MEOX2 siRNA plus anti-GLI1 siRNA in the presence of 8  $\mu$ M cisplatin. Western blot statistical analyses, assessed via quantitative densitometry, were performed to determine  $*p \leq 0.05$  by one-way ANOVA and Dunnett's test for multiple comparisons to identify significant differences with respect to controls. Student's t-test was performed to identify significant differences between control and cisplatin treatment. Quantification analyses were normalized to scrambled siRNA as a negative control for gene silencing. Images were obtained using a C-DIGIT device (LICOR), and pixel quantification and data analyses were carried out using Image Studio software. Total pixel intensity for each specific protein product was normalized to GAPDH. (B) Cell culture images and graphs showing the quantitative analysis of cellular migration as a percentage (transwell migration assays) indicated significant MEOX2 and GLI-1 protein-dependent functions following the individual and combined application of anti-MEOX2 and anti-GLI1 siRNAs in A549, NH2347 and H1975 lung adenocarcinoma cells;  $**p \leq 0.005$  and  $***p \leq 0.0001$  based on one-way ANOVA and Dunnett's multiple comparisons test. (C) Cell culture images and graphs showing the quantitative analysis of cellular proliferation (clonogenic assays) indicated significant MEOX2 and GLI-1 protein-dependent functions following the individual and combined application of anti-MEOX2 and anti-GLI1 siRNAs in A549, NH2347 and H1975 lung adenocarcinoma cells;  $**p \leq 0.005$  and  $***p \leq 0.0001$  based on one-way ANOVA and Dunnett's multiple comparisons test. Transwell migration index and colony growth (clonogenic assays) rates were normalized and quantified using the ImageJ Colony Number plugin tool (see Materials and Methods). Figure provided by CiteAb. Source: Oncotarget, PMID: 28978016.



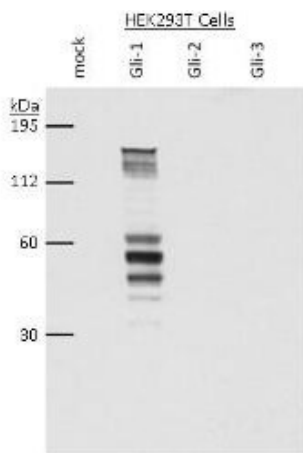
### Immunofluorescence Microscopy

Immunofluorescence of Anti-Gli-1 antibody. HEK293T cells were transiently transfected with Gli-1 (murine). Primary Antibody: Rockland's Anti-Gli-1 antiserum (rabbit) was added 1:400. Secondary Antibody: fluorescent labeled anti-rabbit IgG. Personal communication, Tom Curran, Children's Hospital of Philadelphia, Philadelphia, PA. Detection of mouse Gli-1 present in transfected 293T cells (red).



### Western Blot

Western blot using Rockland's anti-Gli-1 antibody shows detection of a band at ~150 kDa (arrowhead) corresponding to human Gli-1 present in transfected 293T cell lysates (lanes 2 and 4). Mock 293T cell lysates with vector only show no staining (lanes 1 and 3). Lysates were separated by SDS-PAGE and transferred to nitrocellulose. After blocking the membrane was probed with the primary antibody diluted to 1:8,000 (lanes 1 and 2) or 1:4,000 (lanes 3 and 4). Molecular weight estimation was made by comparison to MW markers. Personal communication, Hiro Kimura, St. Jude Children's Research Hospital, Memphis, TN.



### Western Blot

Western blot using Rockland's anti-Gli-1 antibody shows detection of a band at ~150 kDa corresponding to Gli-1 present in HEK293T whole cell lysate transiently transfected with Gli-1 (lane 2). Mock 293T cell lysates and 293T cell lysates transfected with Gli-2 and Gli-3 show no staining (lanes 1, 3 and 4 respectively). Lysates were separated by SDS-PAGE and transferred to nitrocellulose. After blocking, the membrane was probed with Anti-Gli-1 antiserum diluted 1:5,000, followed by HRP conjugated donkey anti-rabbit (Rockland p/n 611-7302). Personal communication, Tom Curran, Children's Hospital of Philadelphia, Philadelphia, PA.

## References

- Takeuchi Y et al. Kruppel-Like Factor 4 represses osteoblast differentiation via ciliary Hedgehog signaling. *Exp Cell Res.* (2018)
- Armas-López et al. Epigenomic study identifies a novel mesenchyme homeobox2-Gli1 transcription axis involved in cancer drug resistance, overall survival and therapy prognosis in lung cancer patients. *Oncotarget* (2017)
- Yoon, JW et al. p53 modulates the activity of the Gli1 oncogene through interactions with the shared coactivator TAF9. *Dna Repair* (2015)
- Kotula JW et al. Targeted disruption of  $\beta$ -arrestin 2-mediated signaling pathways by aptamer chimeras leads to inhibition of leukemic cell growth. *PLoS One.* (2014)
- Jalili A et al. NVP-LDE225, a potent and selective SMOOTHENED antagonist reduces melanoma growth in vitro and in vivo. *PLoS One.* (2013)
- Gurung B et al. Menin directly represses Gli1 expression independent of canonical Hedgehog signaling. *Mol Cancer Res.* (2013)
- Maliniemi P et al. NAV3 copy number changes and target genes in basal and squamous cell cancers. *Exp Dermatol.* (2011)
- Yoon, JW. et al. Defining a role for Sonic hedgehog pathway activation in desmoplastic medulloblastoma by identifying Gli1 target genes. *International Journal of Cancer* (2009)

## Disclaimer

This product is for research use only and is not intended for therapeutic or diagnostic applications. Please contact a technical service representative for more information. All products of animal origin manufactured by Rockland Immunochemicals are derived from starting materials of North American origin. Collection was performed in United States Department of Agriculture (USDA) inspected facilities and all materials have been inspected and certified to be free of disease and suitable for exportation. All properties listed are typical characteristics and are not specifications. All suggestions and data are offered in good faith but without guarantee as conditions and methods of use of our products are beyond our control. All claims must be made within 30 days following the date of delivery. The prospective user must determine the suitability of our materials before adopting them on a commercial scale. Suggested uses of our products are not recommendations to use our products in violation of any patent or as a license under any patent of Rockland Immunochemicals, Inc. If you require a commercial license to use this material and do not have one, then return this material, unopened to: Rockland Inc., P.O. BOX 5199, Limerick, Pennsylvania, USA.