



SZABO SCANDIC

Part of Europa Biosite

Produktinformation



Forschungsprodukte & Biochemikalien



Zellkultur & Verbrauchsmaterial



Diagnostik & molekulare Diagnostik



Laborgeräte & Service

Weitere Information auf den folgenden Seiten!
See the following pages for more information!



Lieferung & Zahlungsart

siehe unsere [Liefer- und Versandbedingungen](#)

Zuschläge

- Mindermengenzuschlag
- Trockeneiszuschlag
- Gefahrgutzuschlag
- Expressversand

SZABO-SCANDIC HandelsgmbH

Quellenstraße 110, A-1100 Wien

T. +43(0)1 489 3961-0

F. +43(0)1 489 3961-7

mail@szabo-scandic.com

www.szabo-scandic.com

[linkedin.com/company/szaboscandic](https://www.linkedin.com/company/szaboscandic) 

Datasheet for 100-401-250**BIVM Antibody****Overview**

Description:	Anti-BIVM (C-terminal specific) (RABBIT) Antibody - 100-401-250
Item No.:	100-401-250
Size:	100 µL
Applications:	ELISA, WB
Reactivity:	Human
Host Species:	Rabbit

Product Details

Background:	BIVM (for basic, immunoglobulin-like variable motif-containing) refers to a recently identified gene product that maps to human chromosome 13q32-q33 and is predicted to encode a 503-amino acid protein. BIVM shows ubiquitous expression in normal human tissue and the presence of a 5' CpG island suggests it is a housekeeping gene. BIVM is likely essential for some aspect of basic cellular function. BIVM is highly charged and localizes to the cytoplasm and nucleus where it may bind to either DNA or RNA or associate with other cellular proteins. Significant sequence homology exists with many organisms.
Synonyms:	rabbit anti-BIVM Antibody, Basic immunoglobulin-like variable motif-containing protein , BIVM
Host Species:	Rabbit
Clonality:	Polyclonal
Format:	Antiserum

Target Details

Gene Name:	BIVM
Reactivity:	Human
Immunogen Type:	Conjugated Peptide
Immunogen:	BIVM peptide corresponding to a region near carboxy terminus of the human protein conjugated to Keyhole Limpet Hemocyanin (KLH).

Purity/Specificity: This product was prepared from monospecific antiserum by delipidation and defibrination. This polyclonal antibody reacts with BIVM. This conserved protein is present in many tissues and organisms and therefore cross-reactivity with BIVM from other sources is likely but has not been determined.

Relevant Links:

- [UniProtKB - Q86UB2](#)
- [NCBI - NP_001153068.1](#)
- [GenelD - 54841](#)

Application Details

Tested Applications: ELISA, WB

Application Note: This polyclonal antibody reacts human BIVM at the C-terminal region and is useful for detection of BIVM by ELISA or western blotting. For immunoblotting a 57 kDa band corresponding to human BIVM is detected. Unstimulated HeLa cells can be used as a positive control. Although not tested, this antibody is likely functional in immunohistochemistry and immunoprecipitation.

Assay Dilutions: All assays should be optimized by the user. Recommended dilutions (if any) may be listed below.

ELISA: 1:5,000 - 1:25,000

WB: 1:1,000

Formulation

Physical State: Liquid (sterile filtered)

Concentration: 90 mg/mL by Refractometry

Buffer: 0.02 M Potassium Phosphate, 0.15 M Sodium Chloride, pH 7.2

Preservative: 0.01% (w/v) Sodium Azide

Stabilizer: None

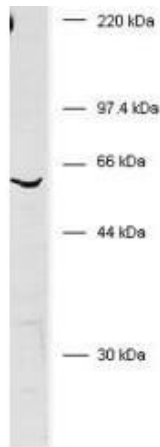
Shipping & Handling

Shipping Condition: Dry Ice

Storage Condition: Store vial at -20° C prior to opening. Aliquot contents and freeze at -20° C or below for extended storage. Avoid cycles of freezing and thawing. Centrifuge product if not completely clear after standing at room temperature. This product is stable for several weeks at 4° C as an undiluted liquid. Dilute only prior to immediate use.

Expiration: Expiration date is one (1) year from date of receipt.

Images



Western Blot

Western blot of anti-human BIVM. Whole cell HeLa lysate was used to probe for endogenous BIVM using Rabbit-anti-Human BIVM (C-terminal specific) polyclonal antibody. A 57 kDa band corresponding to human BIVM protein is detected using a 1:1,000 dilution of the antiserum incubated for 1 hour at room temperature. Washes with 1% Tween-20 TBS preceded reaction with HRP Gt-a-Rabbit IgG (H&L) code 611-103-122 diluted 1:10,000 and incubated for 1 hour at room temperature. The blot was developed using a chemiluminescent detection method (AP ECL 60 sec followed by a 45 sec exposure). Other detection methods will yield similar results.

Disclaimer

This product is for research use only and is not intended for therapeutic or diagnostic applications. Please contact a technical service representative for more information. All products of animal origin manufactured by Rockland Immunochemicals are derived from starting materials of North American origin. Collection was performed in United States Department of Agriculture (USDA) inspected facilities and all materials have been inspected and certified to be free of disease and suitable for exportation. All properties listed are typical characteristics and are not specifications. All suggestions and data are offered in good faith but without guarantee as conditions and methods of use of our products are beyond our control. All claims must be made within 30 days following the date of delivery. The prospective user must determine the suitability of our materials before adopting them on a commercial scale. Suggested uses of our products are not recommendations to use our products in violation of any patent or as a license under any patent of Rockland Immunochemicals, Inc. If you require a commercial license to use this material and do not have one, then return this material, unopened to: Rockland Inc., P.O. BOX 5199, Limerick, Pennsylvania, USA.