



SZABO SCANDIC

Part of Europa Biosite

Produktinformation



Forschungsprodukte & Biochemikalien



Zellkultur & Verbrauchsmaterial



Diagnostik & molekulare Diagnostik



Laborgeräte & Service

Weitere Information auf den folgenden Seiten!
See the following pages for more information!



Lieferung & Zahlungsart

siehe unsere [Liefer- und Versandbedingungen](#)

Zuschläge

- Mindermengenzuschlag
- Trockeneiszuschlag
- Gefahrgutzuschlag
- Expressversand

SZABO-SCANDIC HandelsgmbH

Quellenstraße 110, A-1100 Wien

T. +43(0)1 489 3961-0

F. +43(0)1 489 3961-7

mail@szabo-scandic.com

www.szabo-scandic.com

[linkedin.com/company/szaboscandic](https://www.linkedin.com/company/szaboscandic) 

Datasheet for 100-401-403

Angiotensin 1 Antibody

Overview

Description:	Anti-Angiotensin 1 (RABBIT) Antibody - 100-401-403
Item No.:	100-401-403
Size:	200 µL
Applications:	ELISA, IF, IHC, WB
Reactivity:	Human, Mouse
Host Species:	Rabbit

Product Details

Background:	Anti-Angiotensin-1 Antibody, which recognizes Angiotensin-1 (Ang-1), has importance in the development of the endothelium by regulating tyrosine phosphorylation of the membrane receptor Tie-2/Tek. Ang-1 binding to Tie-2/Tek causes phosphorylation of the receptor. Ang-2 competes for this binding, and thus blocks receptor phosphorylation. Ang-1 has a potential fibrinogen-like domain at the carboxyl terminus and coiled-coil regions in the amino terminus. Ang-1 is prominently expressed in the myocardium of atrium and ventricle, mesenchymal and smooth muscle cells surrounding most blood vessels, and lung. In the adult, Ang-1 is also expressed in the heart and liver. Anti-Angiotensin-1 Antiserum antibody is suitable for cardiovascular research.
Synonyms:	rabbit anti-Angiotensin 1 Antibody, rabbit anti-ANG1 antibody, AGP 1 antibody, AGP1 antibody, AGPT antibody, ANG 1 antibody, Angiotensin1 antibody, ANGPT 1 antibody, ANGPT1 antibody, KIAA0003 antibody
Host Species:	Rabbit
Clonality:	Polyclonal
Format:	Antiserum

Target Details

Gene Name:	Angpt1
Reactivity:	Human, Mouse
Immunogen Type:	Conjugated Peptide

Immunogen:	This whole rabbit serum was prepared by repeated immunizations with a synthetic peptide corresponding to a N-terminus region near aa 15-45 of mouse angiotensin 1 protein conjugated to KLH using maleimide. A residue of cysteine was added to the amino terminal end to facilitate coupling.
Purity/Specificity:	Anti-Angiotensin 1 is directed against mouse angiotensin-1 and shows no reactivity with mouse angiotensin-2. This reagent cross-reacts with human angiotensin 1. Partially cross reactivity is noted with human angiotensin 2. This product was prepared from monospecific antiserum by a delipidation and defibrination.
Relevant Links:	<ul style="list-style-type: none">• NCBI - 46048213• GeneID - 11600• UniProtKB - O08538

Application Details

Tested Applications:	ELISA, IF, IHC, WB
Application Note:	Anti-Angiotensin-1 Antiserum has been tested in ELISA, western blot, immunohistochemistry, and immunofluorescence and is suitable for other antibody based assays. A 1:500 dilution is recommended for western blotting. The reaction of this antiserum directly with cell supernatants may result in high background due to reactivity of components in the serum. This can be alleviated by first immunoprecipitating the antibody:antigen complex and then detecting the antigen. This method results in a very clean and strong signal. Both Ang-1 and Ang-2 proteins have predicted molecular weights of approximately 57 kDa and appear on western blots close to their predicted molecular weights. In some instances additional bands may be seen at approximately 75 kDa which represent highly glycosylated forms of the protein that migrate at a higher apparent molecular weight.
Assay Dilutions:	All assays should be optimized by the user. Recommended dilutions (if any) may be listed below.
ELISA:	1:5,000 - 1:25,000
IHC:	1:200-1:800
IP:	User Optimized
WB:	1:500-1:2,000

Formulation

Physical State:	Liquid (sterile filtered)
Concentration:	90 mg/mL by Refractometry
Buffer:	0.02 M Potassium Phosphate, 0.15 M Sodium Chloride, pH 7.2

Preservative: 0.01% (w/v) Sodium Azide

Stabilizer: None

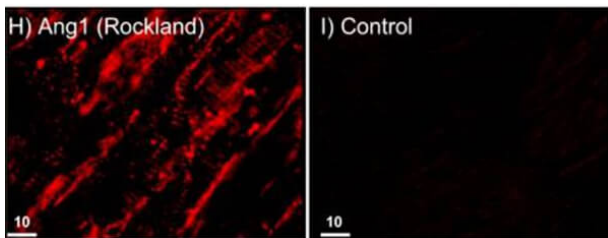
Shipping & Handling

Shipping Condition: Dry Ice

Storage Condition: Store vial at -20° C prior to opening. Aliquot contents and freeze at -20° C or below for extended storage. Avoid cycles of freezing and thawing. Centrifuge product if not completely clear after standing at room temperature. This product is stable for several weeks at 4° C as an undiluted liquid. Dilute only prior to immediate use.

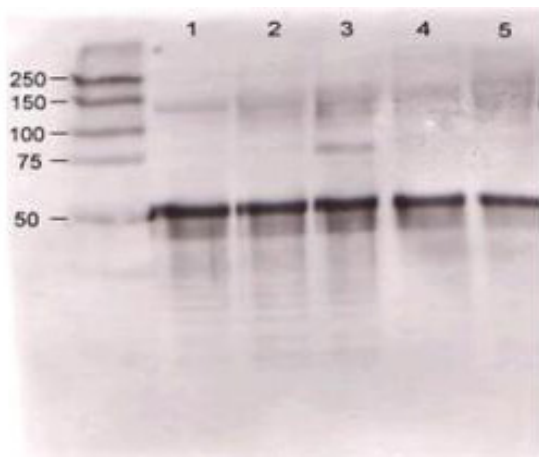
Expiration: Expiration date is one (1) year from date of receipt.

Images



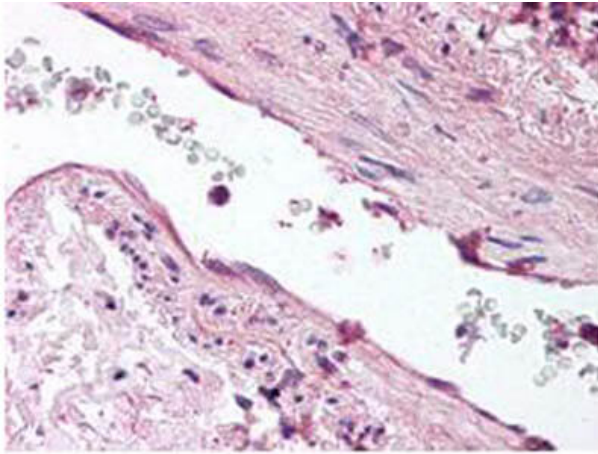
Immunofluorescence Microscopy

Immunofluorescence and confocal imaging of Rabbit Anti-Angiopietin 1 Antibody. (H) Perfusion-fixed mouse Left Ventricle. Anti-Angiopietin 1 conjugated to Alexa Fluor 568 (red), which recognizes only monomers, immunostains CMs and ECs in vivo. (I) Rabbit sera (negative control). Scale bars = 10 μm. Dallabrida SM et al. 2008.



Western Blot

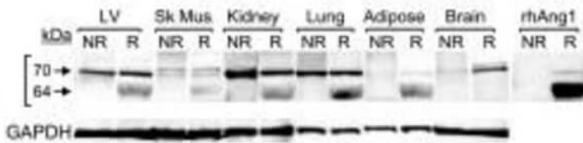
Rabbit anti-Ang-1 was used at a 1:500 dilution to detect mouse Ang-1 by western blot against supernatants of mouse angiopoietin-expressing endothelial cells. Lane 1 - wt endothelial cells. Lane 2 - mouse Ang-1 (clone 1-8) expressing cells. Lane 3 - mouse Ang-1 (clone 1-15) expressing cells. Lane 4 - mouse Ang-2 (clone 2-9) expressing cells. Approximately 20 μg of each lysate was used for 10% SDS-PAGE. Immunoprecipitation preceded the reaction with primary antibody at room temperature for 1 h. After subsequent washing, a 1:5,000 dilution of HRP conjugated Gt-a-Rabbit IgG (611-103-122) preceded color development.


Immunohistochemistry

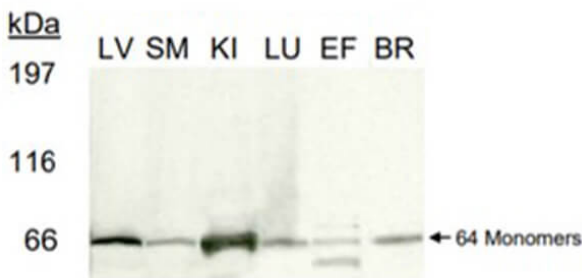
Rockland's anti-ANG1 antibody was diluted 1:500 to detect ANG1 in human lung tissue. Tissue was formalin fixed and paraffin embedded. No pre-treatment of sample was required. The image shows the localization of antibody as the precipitated red signal, with a hematoxylin purple nuclear counter stain.

Western Blot

Western blot of Rb Anti-Angiopoietin 1 Antibody. 100µg of protein lysates treated with PNGase F and evaluated under reduced conditions from Human Left Ventricle, skeletal muscle, kidney, lung, epididymal fat tissue, and brain tissue. Anti-Angiopoietin1 incubated and reprobred with Anti-GAPDH antibodies. Dallabrida SM et al. 2008.


Western Blot

Western blot of Rabbit Anti-Angiopoietin 1 Antibody. Tested on 100µg of PNGase-F-treated and reduced lysates: Mouse Left Ventricle, Skeletal Muscle, Kidney, Lung, Epididymal Fat Tissue, and Brain on a 3-8% gel. Anti-Angiopoietin 1 incubated for 1 hr, anti-Rabbit IgG HRP secondary 1:1500 incubated for 1hr. Dallabrida SM et al. 2008.


References

- Egginton et al. Shear stress-induced angiogenesis in mouse muscle is independent of the vasodilator mechanism and quickly reversible. *Acta Physiologica* (2016)
- Dallabrida SM et al. Integrin binding angiopoietin-1 monomers reduce cardiac hypertrophy. *FASEB J.* (2008)

Disclaimer

This product is for research use only and is not intended for therapeutic or diagnostic applications. Please contact a technical service representative for more information. All products of animal origin manufactured by Rockland Immunochemicals are derived from starting materials of North American origin. Collection was performed in United States Department of Agriculture (USDA) inspected facilities and all materials have been inspected and certified to be free of disease and suitable for exportation. All properties listed are typical characteristics and are not specifications. All suggestions and data are offered in good faith but without guarantee as conditions and methods of use of our products are beyond our control. All claims must be made within 30 days following the date of delivery. The prospective user must determine the suitability of our materials before adopting them on a commercial scale. Suggested uses of our products are not recommendations to use our products in violation of any patent or as a license under any patent of Rockland Immunochemicals, Inc. If you require a commercial license to use this material and do not have one, then return this material, unopened to: Rockland Inc., P.O. BOX 5199, Limerick, Pennsylvania, USA.