



# SZABO SCANDIC

Part of Europa Biosite

## Produktinformation



Forschungsprodukte & Biochemikalien



Zellkultur & Verbrauchsmaterial



Diagnostik & molekulare Diagnostik



Laborgeräte & Service

Weitere Information auf den folgenden Seiten!  
See the following pages for more information!



### Lieferung & Zahlungsart

siehe unsere [Liefer- und Versandbedingungen](#)

### Zuschläge

- Mindermengenzuschlag
- Trockeneiszuschlag
- Gefahrgutzuschlag
- Expressversand

### SZABO-SCANDIC HandelsgmbH

Quellenstraße 110, A-1100 Wien

T. +43(0)1 489 3961-0

F. +43(0)1 489 3961-7

[mail@szabo-scandic.com](mailto:mail@szabo-scandic.com)

[www.szabo-scandic.com](http://www.szabo-scandic.com)

[linkedin.com/company/szaboscandic](https://www.linkedin.com/company/szaboscandic) 

**Datasheet for 100-401-931****Cyclin T2 Antibody****Overview**

<b>Description:</b>	Anti-Cyclin T2 (RABBIT) Antibody - 100-401-931
<b>Item No.:</b>	100-401-931
<b>Size:</b>	100 µL
<b>Applications:</b>	ELISA, WB
<b>Reactivity:</b>	Human
<b>Host Species:</b>	Rabbit

**Product Details**

**Background:** Cyclin T2 is a ubiquitously expressed nuclear protein that is a member of the highly conserved cyclin family, whose members are characterized by a dramatic periodicity in protein abundance through the cell cycle. Cyclins function as regulators of CDK kinases. Different cyclins exhibit distinct expression and degradation patterns that contribute to the temporal coordination of each mitotic event. This cyclin and its kinase partner CDK9 were found to be subunits of the transcription elongation factor p-TEFb. The p-TEFb complex containing this cyclin was reported to interact with, and act as a negative regulator of human immunodeficiency virus type 1 (HIV-1) Tat protein. Anti-Cyclin T2 Antibody is useful for researchers interested in HIV research, Gene expression, and cell cycle pathways.

<b>Synonyms:</b>	rabbit anti-Cyclin T2 antibody, CycT2
<b>Host Species:</b>	Rabbit
<b>Clonality:</b>	Polyclonal
<b>Format:</b>	Antiserum

**Target Details**

<b>Gene Name:</b>	CCNT2
<b>Reactivity:</b>	Human
<b>Immunogen Type:</b>	Recombinant Protein
<b>Immunogen:</b>	This antibody was prepared from whole rabbit serum produced by repeated immunizations with a recombinant protein corresponding to amino acids 1-584 of human Cyclin T2a protein.

**Purity/Specificity:** This antibody is directed against human Cyclin T2 proteins and was prepared from monospecific antiserum by delipidation and defibrination. Antiserum will specifically react with proteins 74 and 81 kDa in size corresponding to isoforms of Cyclin T2 protein by western blot. A protein:protein BLAST analysis was used to suggest cross reactivity with Cyclin T2a and T2b from dog (96%), bovine (93%), mouse (88%) and rat (85%) sources based on high homology with the full length protein. Reactivity against homologues from other sources is not known.

**Relevant Links:**

- [UniProtKB - O60583](#)
- [NCBI - NP\\_490595](#)
- [GenelD - 905](#)

## Application Details

**Tested Applications:** ELISA, WB

**Application Note:** This antibody has been tested for use in ELISA and western blot. Specific conditions for reactivity should be optimized by the end user. Expect bands approximately 74 and 81 kDa in size corresponding to isoforms of Cyclin T2 protein by western blotting in the appropriate tissue or cell lysate or extract.

**Assay Dilutions:** All assays should be optimized by the user. Recommended dilutions (if any) may be listed below.

**ELISA:** 1:5,000 - 1:20,000

**IP:** 1:100

**WB:** 1:500 - 1:2,000

## Formulation

**Physical State:** Liquid (sterile filtered)

**Concentration:** 85 mg/mL by Refractometry

**Buffer:** None

**Preservative:** 0.01% (w/v) Sodium Azide

**Stabilizer:** None

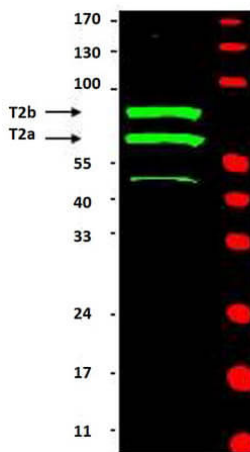
## Shipping & Handling

**Shipping Condition:** Dry Ice

**Storage Condition:** Store vial at -20° C prior to opening. Aliquot contents and freeze at -20° C or below for extended storage. Avoid cycles of freezing and thawing. Centrifuge product if not completely clear after standing at room temperature. This product is stable for several weeks at 4° C as an undiluted liquid. Dilute only prior to immediate use.

**Expiration:** Expiration date is one (1) year from date of receipt.

## Images



### Western Blot

Western blot using Rockland's Anti-Cyclin T2 (Rabbit) is shown to detect two major bands (arrowheads) corresponding to human Cyclin T2a (~74kDa) and T2b (~81kDa) as indicated. Approximately 33 µg of a HeLa whole cell lysate was separated by 4-20% Tris Glycine SDS-PAGE. After blocking the membrane with 5% BLOTTO (p/n B501-0500) in PBS, the membrane was probed for overnight at 4° C with the primary antibody diluted to 1:500 in 5% BLOTTO in PBS. The membrane was washed and reacted with a 1:10,000 dilution of IRDye800 conjugated Gt-a-Rabbit IgG [H&L] (611-132-122) for 45 min at room temperature (800 nm channel, green). Molecular weight estimation was made by comparison to prestained MW markers indicated at the right (700 nm channel, red). IRDye™800 fluorescence image was captured using the Odyssey® Infrared Imaging System developed by LI-COR. IRDye is a trademark of LI-COR, Inc. Other detection systems will yield similar results.

## Disclaimer

This product is for research use only and is not intended for therapeutic or diagnostic applications. Please contact a technical service representative for more information. All products of animal origin manufactured by Rockland Immunochemicals are derived from starting materials of North American origin. Collection was performed in United States Department of Agriculture (USDA) inspected facilities and all materials have been inspected and certified to be free of disease and suitable for exportation. All properties listed are typical characteristics and are not specifications. All suggestions and data are offered in good faith but without guarantee as conditions and methods of use of our products are beyond our control. All claims must be made within 30 days following the date of delivery. The prospective user must determine the suitability of our materials before adopting them on a commercial scale. Suggested uses of our products are not recommendations to use our products in violation of any patent or as a license under any patent of Rockland Immunochemicals, Inc. If you require a commercial license to use this material and do not have one, then return this material, unopened to: Rockland Inc., P.O. BOX 5199, Limerick, Pennsylvania, USA.