



SZABO SCANDIC

Part of Europa Biosite

Produktinformation



Forschungsprodukte & Biochemikalien



Zellkultur & Verbrauchsmaterial



Diagnostik & molekulare Diagnostik



Laborgeräte & Service

Weitere Information auf den folgenden Seiten!
See the following pages for more information!



Lieferung & Zahlungsart

siehe unsere [Liefer- und Versandbedingungen](#)

Zuschläge

- Mindermengenzuschlag
- Trockeneiszuschlag
- Gefahrgutzuschlag
- Expressversand

SZABO-SCANDIC HandelsgmbH

Quellenstraße 110, A-1100 Wien

T. +43(0)1 489 3961-0

F. +43(0)1 489 3961-7

mail@szabo-scandic.com

www.szabo-scandic.com

[linkedin.com/company/szaboscandic](https://www.linkedin.com/company/szaboscandic) 

Datasheet for 100-401-B21

Avi Epitope Tag Antibody

Overview

Description:	Anti-Avi Epitope Tag (RABBIT) Antibody - 100-401-B21
Item No.:	100-401-B21
Size:	100 µL
Applications:	ELISA, WB
Reactivity:	Avi-Tag
Host Species:	Rabbit

Product Details

Background:	The peptide is also called the biotin acceptor peptide (BAP) of the biotin carboxyl carrier protein (BCCP) subunit of acetyl CoA carboxylase of E. coli.
Synonyms:	rabbit anti-Biotin Ligase Epitope Tag Antibody, rabbit anti-Avi-tag antibody, biotin ligase, biotin operon repressor protein, biotin holoenzyme synthetase, biotin-[acetyl-CoA carboxylase] synthetase
Host Species:	Rabbit
Clonality:	Polyclonal
Format:	Antiserum

Target Details

Reactivity:	Avi-Tag
Immunogen Type:	Conjugated Peptide
Immunogen:	Anti-Avi Epitope Tag antibody was prepared from whole rabbit serum produced by repeated immunizations with a synthetic avi-tag peptide GLNDIFEAQKIEWH (minimal BirA substrate; biotin is added to the sequence at the lysine).
Purity/Specificity:	This antiserum detects the minimal peptide substrate GLNDIFEAQKIEWH for the E. coli biotin ligase BirA. Western blot analysis of B. subtilis strains producing either (Avi-tagged) Sp0IIAH (XWB49) or (Avi-tagged) Sp0IIQ (XWB46) showed strong and specific reactivity to the antisera.

Application Details

Tested Applications:	ELISA, WB
Application Note:	Anti-Avi Epitope Tag Antibody has been tested in ELISA and Western blot. Minor background bands of unknown identity may be observed. The antisera will recognize the Avi-tag irrespective of the whether the tag is biotinylated (data not shown).
Assay Dilutions:	All assays should be optimized by the user. Recommended dilutions (if any) may be listed below.
ELISA:	1:5,000
WB:	1:5,000

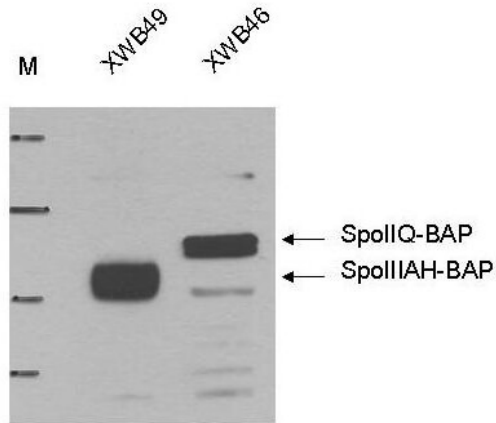
Formulation

Physical State:	Liquid (sterile filtered)
Concentration:	90 mg/ml by Refractometry
Buffer:	0.02 M Potassium Phosphate, 0.15 M Sodium Chloride, pH 7.2
Preservative:	0.01% (w/v) Sodium Azide
Stabilizer:	None

Shipping & Handling

Shipping Condition:	Dry Ice
Storage Condition:	Store vial at -20° C prior to opening. Aliquot contents and freeze at -20° C or below for extended storage. Avoid cycles of freezing and thawing. Centrifuge product if not completely clear after standing at room temperature. This product is stable for several weeks at 4° C as an undiluted liquid. Dilute only prior to immediate use.
Expiration:	Expiration date is one (1) year from date of receipt.

Images



Western Blot

Western blot using Rockland's Anti-Biotin Ligase Epitope Tag antibody shows detection of the BLT Ligase Target in lysates of whole cell *Bacillus subtilis* strains producing either BAP-tagged (Biotin-Acceptor Peptide-tagged) SpolIIAH (XWB49) (~ 25 kDa) or BAP-tagged SpolIQA (XWB46) (~33 kDa). These proteins regulate transcription in *Bacillus subtilis*. The identity of the lower molecular weight bands in the last lane is unknown. Personal communication, J. Meisner, C. Moran, Jr., J. Boss, Emory University School of Medicine, Atlanta, GA.

References

- Abelin JG et al. Defining HLA-II ligand processing and binding rules with mass spectrometry enhances cancer epitope prediction. *Immunity*. (2019)

Disclaimer

This product is for research use only and is not intended for therapeutic or diagnostic applications. Please contact a technical service representative for more information. All products of animal origin manufactured by Rockland Immunochemicals are derived from starting materials of North American origin. Collection was performed in United States Department of Agriculture (USDA) inspected facilities and all materials have been inspected and certified to be free of disease and suitable for exportation. All properties listed are typical characteristics and are not specifications. All suggestions and data are offered in good faith but without guarantee as conditions and methods of use of our products are beyond our control. All claims must be made within 30 days following the date of delivery. The prospective user must determine the suitability of our materials before adopting them on a commercial scale. Suggested uses of our products are not recommendations to use our products in violation of any patent or as a license under any patent of Rockland Immunochemicals, Inc. If you require a commercial license to use this material and do not have one, then return this material, unopened to: Rockland Inc., P.O. BOX 5199, Limerick, Pennsylvania, USA.