



# SZABO SCANDIC

Part of Europa Biosite

## Produktinformation



Forschungsprodukte & Biochemikalien



Zellkultur & Verbrauchsmaterial



Diagnostik & molekulare Diagnostik



Laborgeräte & Service

Weitere Information auf den folgenden Seiten!  
See the following pages for more information!



### Lieferung & Zahlungsart

siehe unsere [Liefer- und Versandbedingungen](#)

### Zuschläge

- Mindermengenzuschlag
- Trockeneiszuschlag
- Gefahrgutzuschlag
- Expressversand

### SZABO-SCANDIC HandelsgmbH

Quellenstraße 110, A-1100 Wien

T. +43(0)1 489 3961-0

F. +43(0)1 489 3961-7

[mail@szabo-scandic.com](mailto:mail@szabo-scandic.com)

[www.szabo-scandic.com](http://www.szabo-scandic.com)

[linkedin.com/company/szaboscandic](https://www.linkedin.com/company/szaboscandic) 

**Datasheet for 100-401-C86****NMDA R2A Antibody****Overview**

<b>Description:</b>	Anti-NMDA R2A (RABBIT) Antibody - 100-401-C86
<b>Item No.:</b>	100-401-C86
<b>Size:</b>	50 µL
<b>Applications:</b>	WB
<b>Reactivity:</b>	Human, Mouse, Rat
<b>Host Species:</b>	Rabbit

**Product Details**

<b>Background:</b>	NMDA R2A Antibody detects NMDA R2A protein. The NMDA receptor (NMDAR) plays an essential role in memory, neuronal development and it has also been implicated in several disorders of the central nervous system including Alzheimer's, epilepsy and ischemic neuronal cell death. The NMDA receptor is also one of the principal molecular targets for alcohol in the CNS. The NMDAR is also potentiated by protein phosphorylation. The rat NMDAR1 (NR1) was the first subunit of the NMDAR to be cloned. The NR1 protein can form NMDA activated channels when expressed in <i>Xenopus</i> oocytes but the currents in such channels are much smaller than those seen in situ. Channels with more physiological characteristics are produced when the NR1 subunit is combined with one or more of the NMDAR2 (NR2 A-D) subunits. Anti-NMDA R2A Antibody is ideal for investigators involved in Neuroscience, Cell Signaling, and Signal Transduction research.
<b>Synonyms:</b>	Glutamate [NMDA] receptor subunit epsilon-1, N-methyl D-aspartate receptor subtype 2A, NMDAR2A, NR2A, Grin2a
<b>Host Species:</b>	Rabbit
<b>Clonality:</b>	Polyclonal
<b>Format:</b>	Antiserum

**Target Details**

<b>Gene Name:</b>	Grin2a
<b>Reactivity:</b>	Human, Mouse, Rat

<b>Immunogen Type:</b>	Recombinant Protein
<b>Immunogen:</b>	Anti-NMDA R2A Antibody was produced by repeated immunizations with fusion protein from the C-terminal region of the NR2A subunit
<b>Purity/Specificity:</b>	Anti-NMDA R2A antibody is directed against NMDA R2A protein. The antibody was prepared from monospecific neat serum. Anti-NMDA R2A antibodies exhibit no reactivity towards the NR2B and NR2C subunits. Immunolabeling is blocked by pre-adsorption of the antibody with the fusion protein used to generate the antibody. Reactivity is reported to occur with rat, mouse and human.
<b>Relevant Links:</b>	<ul style="list-style-type: none"><li>• <a href="#">UniProtKB - Q00959</a></li><li>• <a href="#">GenelD - 24409</a></li><li>• <a href="#">UniProtKB - Q00959.2</a></li></ul>

## Application Details

<b>Tested Applications:</b>	WB
<b>Application Note:</b>	Anti-NMDA R2A Antibody has been tested by Western Blotting. Expect a band of approximately 180kDa in size corresponding to the NR2A subunit of the NMDA receptor in appropriate cell lysate or extract. A dilution of 1:1000 is recommended although specific conditions for reactivity should be optimized by the end user.
<b>Assay Dilutions:</b>	All assays should be optimized by the user. Recommended dilutions (if any) may be listed below.
<b>WB:</b>	1:1000

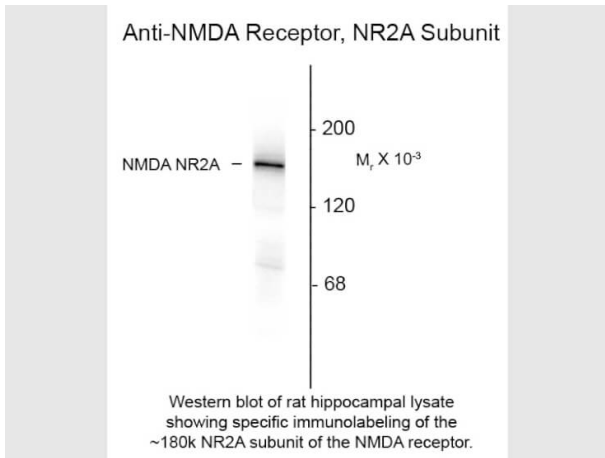
## Formulation

<b>Physical State:</b>	Liquid
<b>Concentration:</b>	Titred value sufficient to run approximately 10 mini blots. neat

## Shipping & Handling

<b>Shipping Condition:</b>	Dry Ice
<b>Storage Condition:</b>	Store vial at -20° C prior to opening. This product is stable at 4° C as an undiluted liquid. For extended storage, aliquot contents and freeze at -20° C or below. Avoid cycles of freezing and thawing. Dilute only prior to immediate use.
<b>Expiration:</b>	Expiration date is one (1) year from date of receipt.

## Images



### Western Blot

Western Blot of Anti-NMDA R2A (Rabbit) Antibody. Lane 1: rat hippocampal lysate. Lane 2: none. Load: 10 µg per lane. Primary antibody: NMDA R2A antibody at 1:400 for overnight at 4°C. Secondary antibody: IRDye800™ rabbit secondary antibody at 1:10,000 for 45 min at RT. Block: 5% BLOTTO overnight at 4°C. Predicted/Observed size: ~180k, 180 kDa for NR2A subunit of the NMDA receptor. Other band(s): none.

## Disclaimer

This product is for research use only and is not intended for therapeutic or diagnostic applications. Please contact a technical service representative for more information. All products of animal origin manufactured by Rockland Immunochemicals are derived from starting materials of North American origin. Collection was performed in United States Department of Agriculture (USDA) inspected facilities and all materials have been inspected and certified to be free of disease and suitable for exportation. All properties listed are typical characteristics and are not specifications. All suggestions and data are offered in good faith but without guarantee as conditions and methods of use of our products are beyond our control. All claims must be made within 30 days following the date of delivery. The prospective user must determine the suitability of our materials before adopting them on a commercial scale. Suggested uses of our products are not recommendations to use our products in violation of any patent or as a license under any patent of Rockland Immunochemicals, Inc. If you require a commercial license to use this material and do not have one, then return this material, unopened to: Rockland Inc., P.O. BOX 5199, Limerick, Pennsylvania, USA.